

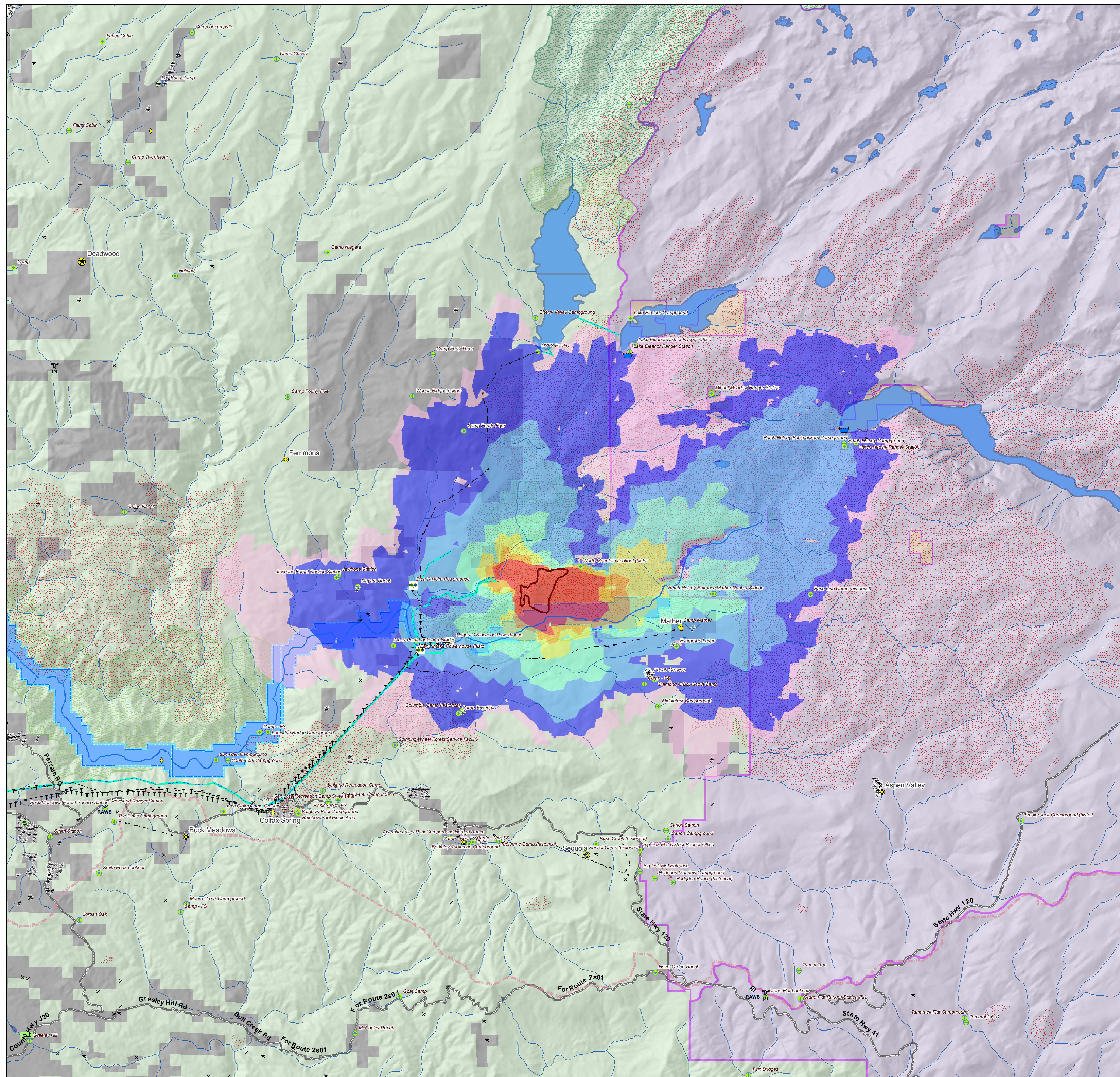


North Mountain, CA

24 June 2008 T1_A_080624_jd

Major Values-at-Risk per
FSPRO Fire Spread Probabilities:
7 days as of 23 June 2008

- FS Pro Fire Perimeter 22 June
- Past Fires 1994-2007
- FSPRO Fire Spread Probabilities**
- > 80 %
- 60 - 80 %
- 40 - 60 %
- 20 - 40%
- 5 - 20 %
- 1 - 5 %
- < 1 %
- # Building Clusters: Tuolumne County
- Z RAWs Stations
- v Water: Dams > 100af
- | Water Supply: Intakes
- Water Pipeline - Aqueduct - Canal
- Powerlines
- * Power Pylon
- + Power or Pumping Substation
- X Communication Towers
- h Schools
- ⌄ HAZMAT: Mines
- W HAZMAT: Hazardous Waste
- ⊗ Other Landmarks
- Interstates
- Major Roads
- County Boundary
- Jurisdiction**
- Private
- Other Federal
- NPS
- USFS
- Inventoried Roadless
- Designated Wilderness
- Wild-Scenic-Rec Rivers



*Building Clusters represent the center of parcels where county assessor records indicate taxable improvements are present. One or more structures and other improvements may exist proximate to these point locations.

**Recreation residences and special use structures data are not available from USFS and are not identified or analyzed in this report.

CAUTION: Defer to air photos or local knowledge for exact structure and other feature locations.

1:50,000

0 2.5 5 10 Miles