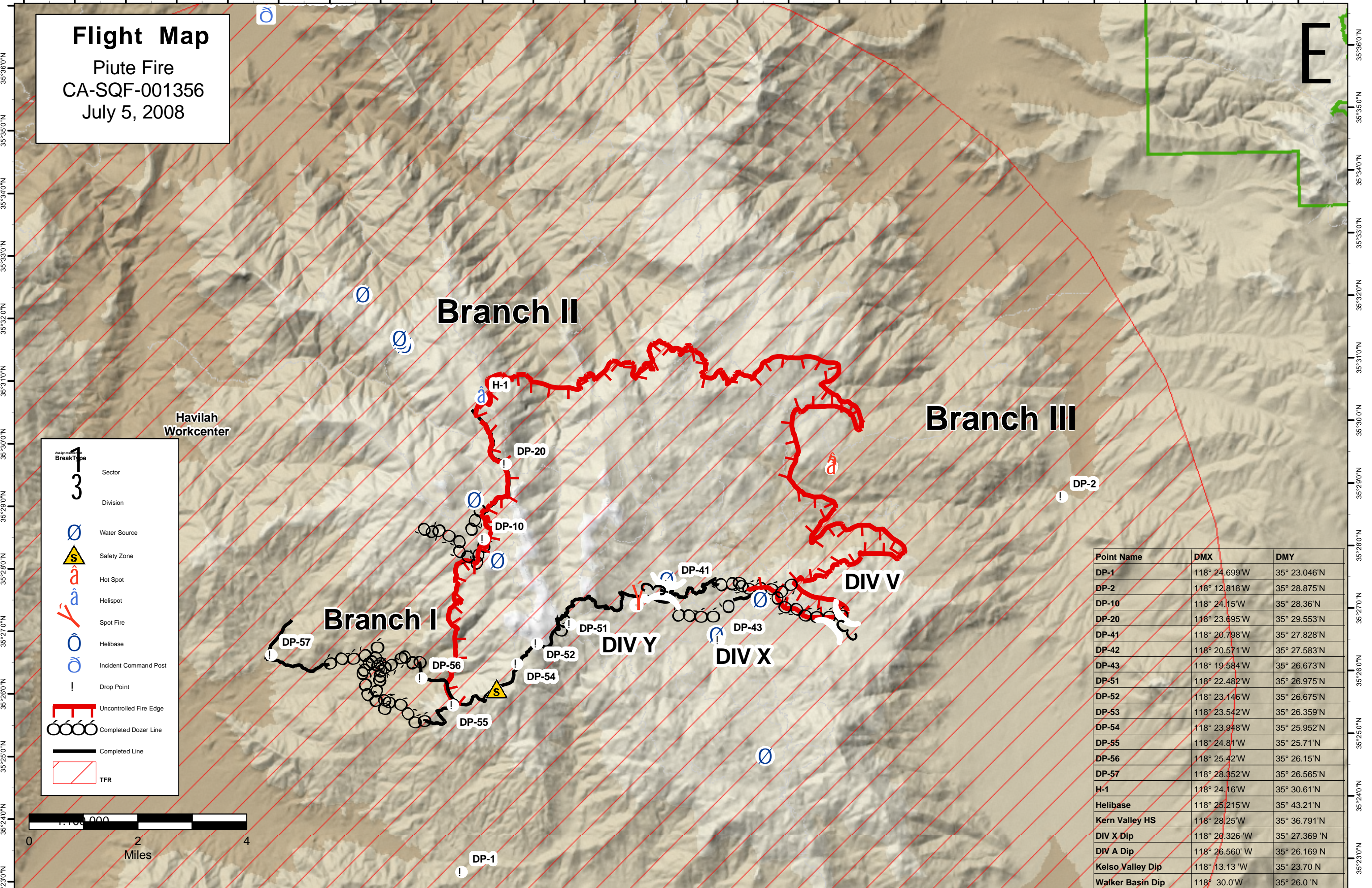


118°330'W 118°320'W 118°310'W 118°300'W 118°290'W 118°280'W 118°270'W 118°260'W 118°250'W 118°240'W 118°230'W 118°220'W 118°210'W 118°200'W 118°190'W 118°180'W 118°170'W 118°160'W 118°150'W 118°140'W 118°130'W 118°120'W 118°110'W 118°100'W 118°90'W 118°80'W

Flight Map
 Piute Fire
 CA-SQF-001356
 July 5, 2008

E



Legend

Assignment BreakType

- 1 Sector
- 3 Division
- Water Source
- Safety Zone
- Hot Spot
- Helispot
- Spot Fire
- Helibase
- Incident Command Post
- Drop Point
- Uncontrolled Fire Edge
- Completed Dozer Line
- Completed Line
- TFR

Point Name	DMX	DMY
DP-1	118° 24.699'W	35° 23.046'N
DP-2	118° 12.818'W	35° 28.875'N
DP-10	118° 24.15'W	35° 28.36'N
DP-20	118° 23.695'W	35° 29.553'N
DP-41	118° 20.798'W	35° 27.828'N
DP-42	118° 20.571'W	35° 27.583'N
DP-43	118° 19.584'W	35° 26.673'N
DP-51	118° 22.482'W	35° 26.975'N
DP-52	118° 23.146'W	35° 26.675'N
DP-53	118° 23.542'W	35° 26.359'N
DP-54	118° 23.948'W	35° 25.952'N
DP-55	118° 24.81'W	35° 25.71'N
DP-56	118° 25.42'W	35° 26.15'N
DP-57	118° 28.352'W	35° 26.565'N
H-1	118° 24.16'W	35° 30.61'N
Helibase	118° 25.215'W	35° 43.21'N
Kern Valley HS	118° 28.25'W	35° 36.791'N
DIV X Dip	118° 20.326' W	35° 27.369' N
DIV A Dip	118° 26.560' W	35° 26.169' N
Kelso Valley Dip	118° 13.13 'W	35° 23.70 'N
Walker Basin Dip	118° 30.0'W	35° 26.0 'N

0 2 4
 Miles

35°230'N 35°240'N 35°250'N 35°260'N 35°270'N 35°280'N 35°290'N 35°300'N 35°310'N 35°320'N 35°330'N 35°340'N 35°350'N 35°360'N