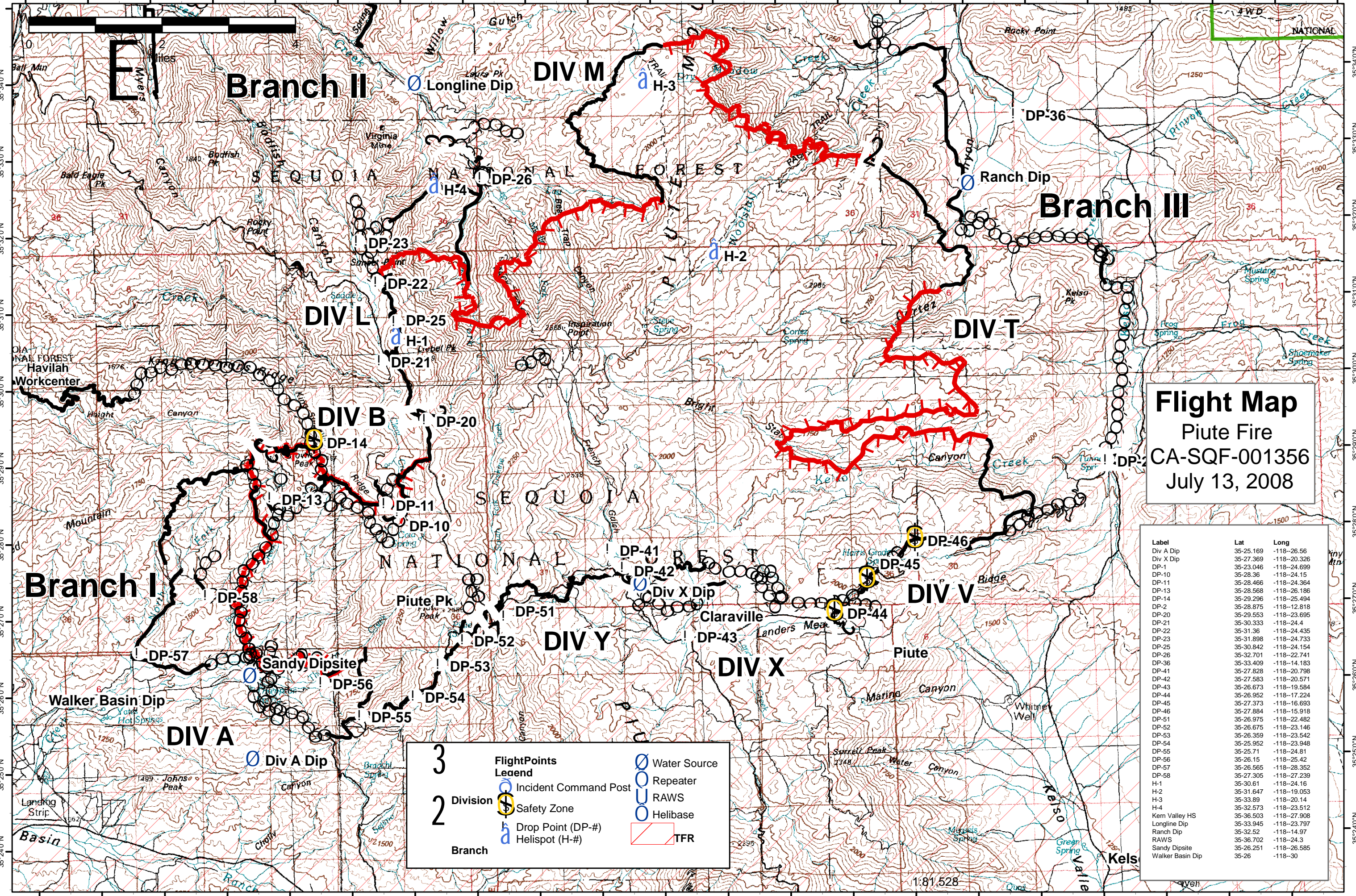


118°30'0"W 118°29'0"W 118°28'0"W 118°27'0"W 118°26'0"W 118°25'0"W 118°24'0"W 118°23'0"W 118°22'0"W 118°21'0"W 118°20'0"W 118°19'0"W 118°18'0"W 118°17'0"W 118°16'0"W 118°15'0"W 118°14'0"W 118°13'0"W 118°12'0"W 118°11'0"W 118°10'0"W 118°9'0"W



**Flight Map**  
 Piute Fire  
 CA-SQF-001356  
 July 13, 2008

Label	Lat	Long
Div A Dip	35-25.169	-118-26.56
Div X Dip	35-27.369	-118-20.326
DP-1	35-23.046	-118-24.699
DP-10	35-28.36	-118-24.15
DP-11	35-28.466	-118-24.364
DP-13	35-28.568	-118-26.186
DP-14	35-29.296	-118-25.494
DP-2	35-28.875	-118-12.818
DP-20	35-29.553	-118-23.695
DP-21	35-30.333	-118-24.4
DP-22	35-31.36	-118-24.435
DP-23	35-31.898	-118-24.733
DP-25	35-30.842	-118-24.154
DP-26	35-32.701	-118-22.741
DP-36	35-33.409	-118-14.183
DP-41	35-27.828	-118-20.798
DP-42	35-27.583	-118-20.571
DP-43	35-26.673	-118-19.584
DP-44	35-26.952	-118-17.224
DP-45	35-27.373	-118-16.693
DP-46	35-27.884	-118-15.918
DP-51	35-26.975	-118-22.482
DP-52	35-26.675	-118-23.146
DP-53	35-26.359	-118-23.542
DP-54	35-25.952	-118-23.948
DP-55	35-25.71	-118-24.81
DP-56	35-26.15	-118-25.42
DP-57	35-26.565	-118-28.352
DP-58	35-27.305	-118-27.239
H-1	35-30.61	-118-24.16
H-2	35-31.647	-118-19.053
H-3	35-33.89	-118-20.14
H-4	35-32.573	-118-23.512
Kern Valley HS	35-36.503	-118-27.908
Longline Dip	35-33.945	-118-23.797
Ranch Dip	35-32.52	-118-14.97
RAWS	35-36.702	-118-24.3
Sandy Dipsite	35-26.251	-118-26.585
Walker Basin Dip	35-26	-118-30

**3 FlightPoints Legend**

- Incident Command Post
- Safety Zone
- Drop Point (DP-#)
- Helispot (H-#)
- Water Source
- Repeater
- RAWS
- Helibase
- TFR

**2 Division**

**Branch**

1:81,528

118°30'0"W 118°29'0"W 118°28'0"W 118°27'0"W 118°26'0"W 118°25'0"W 118°24'0"W 118°23'0"W 118°22'0"W 118°21'0"W 118°20'0"W 118°19'0"W 118°18'0"W 118°17'0"W 118°16'0"W 118°15'0"W 118°14'0"W 118°13'0"W 118°12'0"W 118°11'0"W 118°10'0"W