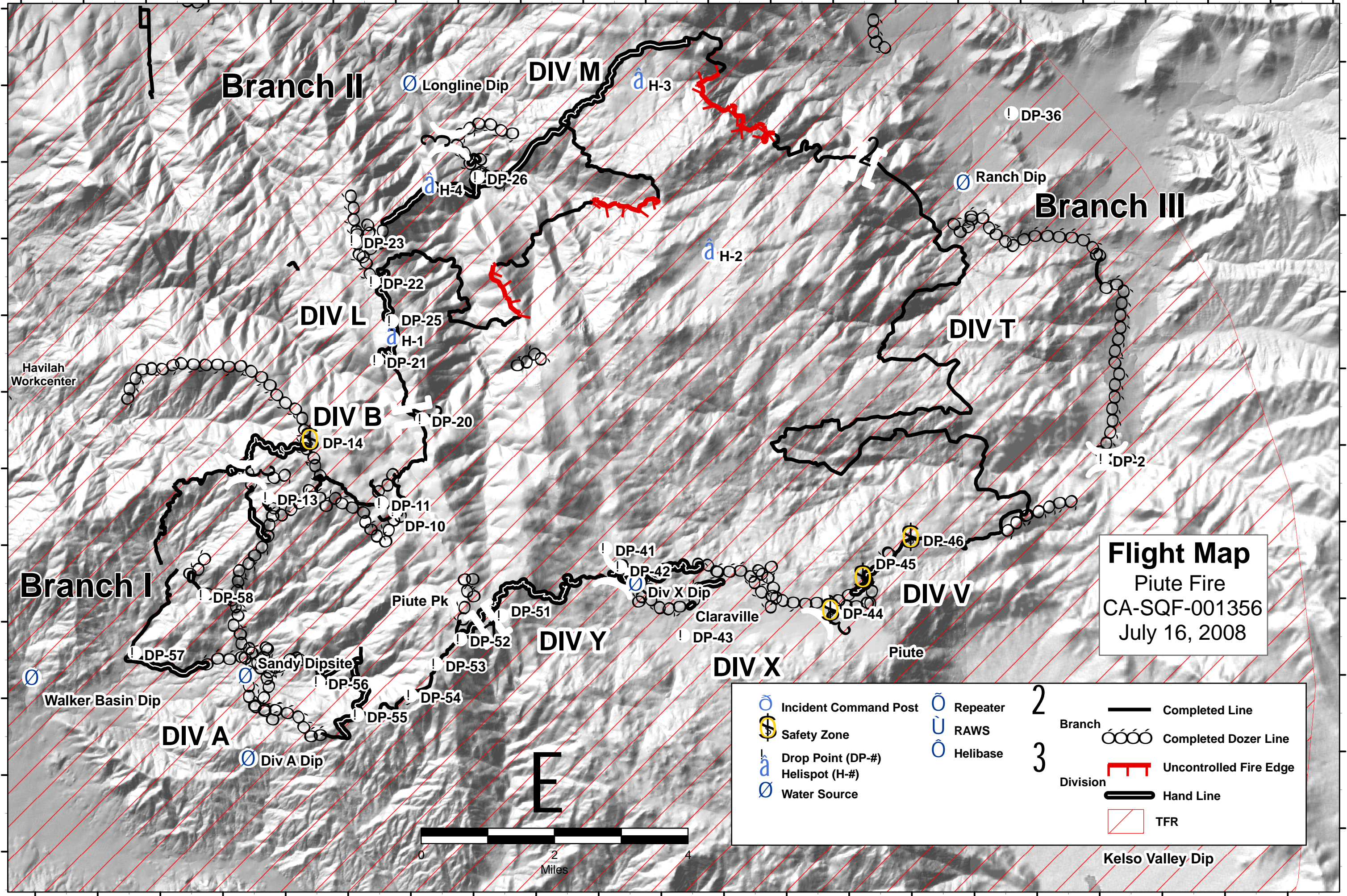
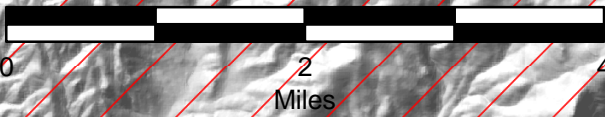


118°30'0"W 118°29'0"W 118°28'0"W 118°27'0"W 118°26'0"W 118°25'0"W 118°24'0"W 118°23'0"W 118°22'0"W 118°21'0"W 118°20'0"W 118°19'0"W 118°18'0"W 118°17'0"W 118°16'0"W 118°15'0"W 118°14'0"W 118°13'0"W 118°12'0"W 118°11'0"W 118°10'0"W 118°9'0"W



Flight Map
Piute Fire
CA-SQF-001356
July 16, 2008

	Incident Command Post		Repeater	2		Completed Line	
	Safety Zone		RAWS		3		Completed Dozer Line
	Drop Point (DP-#)		Helibase				Uncontrolled Fire Edge
	Water Source					Hand Line	
						TFR	



E

Kelso Valley Dip

118°30'0"W 118°29'0"W 118°28'0"W 118°27'0"W 118°26'0"W 118°25'0"W 118°24'0"W 118°23'0"W 118°22'0"W 118°21'0"W 118°20'0"W 118°19'0"W 118°18'0"W 118°17'0"W 118°16'0"W 118°15'0"W 118°14'0"W 118°13'0"W 118°12'0"W 118°11'0"W 118°10'0"W

35°34'0"N
35°33'0"N
35°32'0"N
35°31'0"N
35°30'0"N
35°29'0"N
35°28'0"N
35°27'0"N
35°26'0"N
35°25'0"N
35°24'0"N

35°34'0"N
35°33'0"N
35°32'0"N
35°31'0"N
35°30'0"N
35°29'0"N
35°28'0"N
35°27'0"N
35°26'0"N
35°25'0"N
35°24'0"N