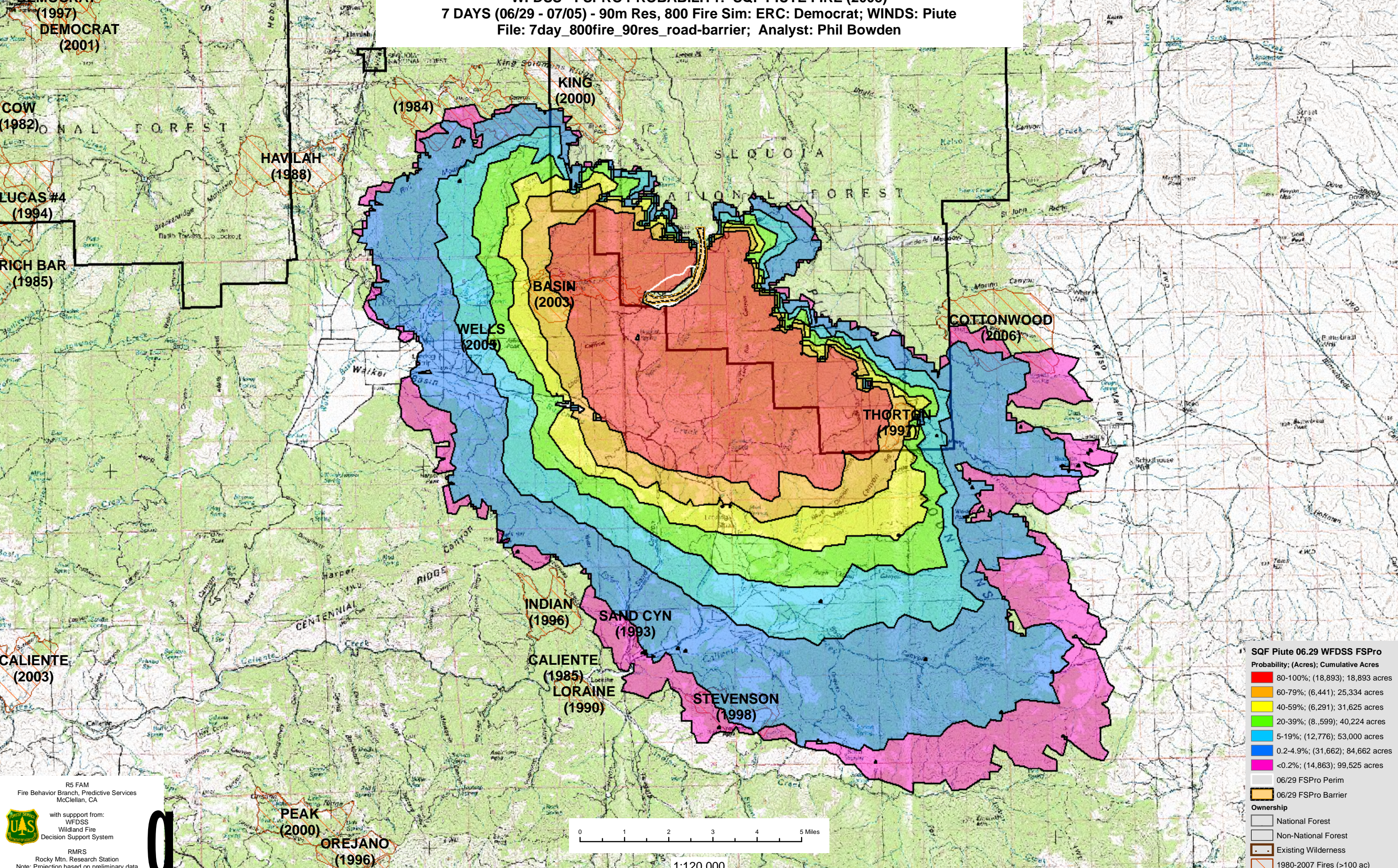


June 29, 2008

WFDSS - FSPRO PROBABILITY: SQF PIUTE FIRE (2008) 7 DAYS (06/29 - 07/05) - 90m Res, 800 Fire Sim: ERC: Democrat; WINDS: Piute File: 7day_800fire_90res_road-barrier; Analyst: Phil Bowden



(1997) **DEMOCRAT** (2001)

COW (1982)

LUCAS #4 (1994)

RICH BAR (1985)

CALIENTE (2003)

PEAK (2000)

OREJANO (1996)

HAVILAH (1988)

(1984)

KING (2000)

BASIN (2003)

WELKS (2009)

COTTONWOOD (2006)

THORTON (1997)

INDIAN (1996)

SAND CYN (1993)

GALIENTE (1985)

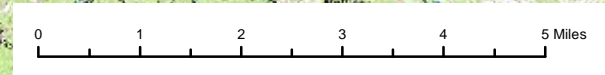
LORAINÉ (1990)

STEVENSON (1998)

R5 FAM
Fire Behavior Branch, Predictive Services
McClellan, CA

with support from:
WFDSS
Wildland Fire
Decision Support System

RMRS
Rocky Mtn. Research Station
Note: Projection based on preliminary data



1:120,000

SQF Piute 06.29 WFDSS FSPro

Probability; (Acres); Cumulative Acres

80-100%	(18,893); 18,893 acres
60-79%	(6,441); 25,334 acres
40-59%	(6,291); 31,625 acres
20-39%	(8,599); 40,224 acres
5-19%	(12,776); 53,000 acres
0.2-4.9%	(31,662); 84,662 acres
<0.2%	(14,863); 99,525 acres

06/29 FSPro Perim

06/29 FSPro Barrier

Ownership

- National Forest
- Non-National Forest
- Existing Wilderness
- 1980-2007 Fires (>100 ac)