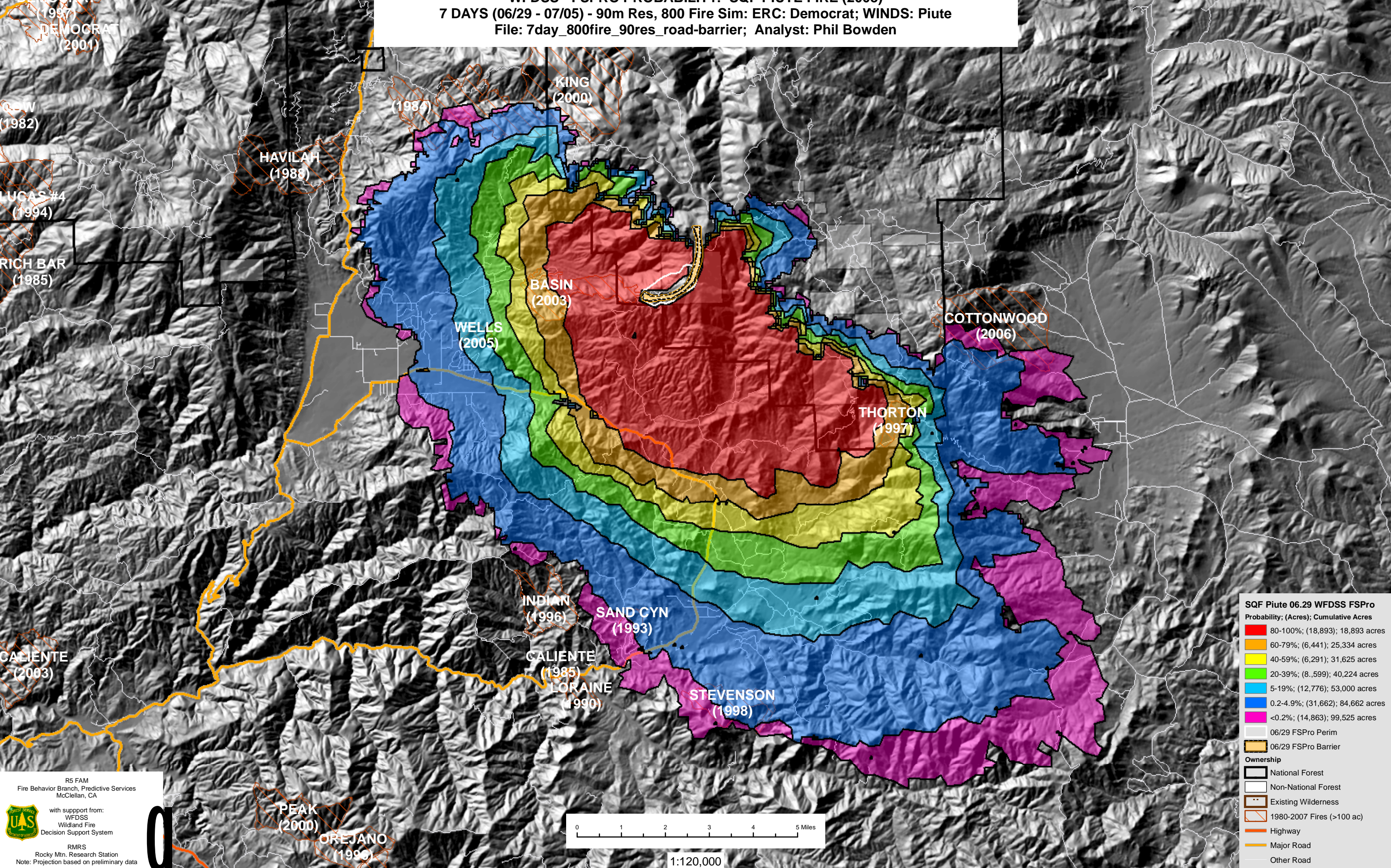


June 29, 2008

WFDSS - FSPRO PROBABILITY: SQF PIUTE FIRE (2008)
7 DAYS (06/29 - 07/05) - 90m Res, 800 Fire Sim: ERC: Democrat; WINDS: Piute
 File: 7day_800fire_90res_road-barrier; Analyst: Phil Bowden



SQF Piute 06.29 WFDSS FSPro

Probability	(Acres)	Cumulative Acres
80-100%	(18,893)	18,893 acres
60-79%	(6,441)	25,334 acres
40-59%	(6,291)	31,625 acres
20-39%	(8,599)	40,224 acres
5-19%	(12,776)	53,000 acres
0.2-4.9%	(31,662)	84,662 acres
<0.2%	(14,863)	99,525 acres

06/29 FSPro Perim
 06/29 FSPro Barrier

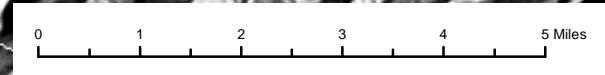
Ownership

- National Forest
- Non-National Forest
- Existing Wilderness
- 1980-2007 Fires (>100 ac)
- Highway
- Major Road
- Other Road

R5 FAM
 Fire Behavior Branch, Predictive Services
 McClellan, CA

with support from:
 WFDSS
 Wildland Fire
 Decision Support System

RMRS
 Rocky Mtn. Research Station
 Note: Projection based on preliminary data



1:120,000