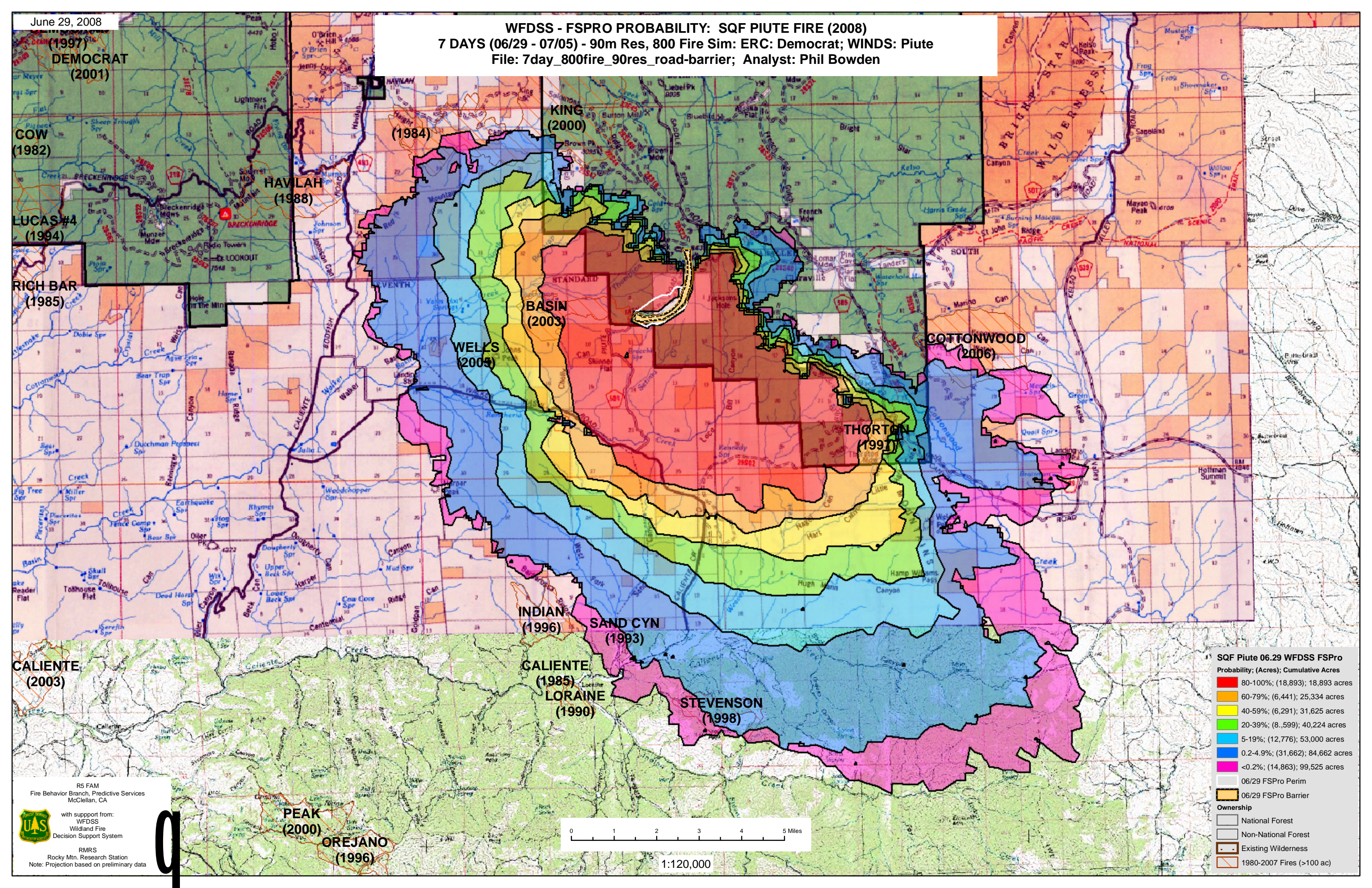


### WFDSS - FSPRO PROBABILITY: SQF PIUTE FIRE (2008) 7 DAYS (06/29 - 07/05) - 90m Res, 800 Fire Sim: ERC: Democrat; WINDS: Piute File: 7day\_800fire\_90res\_road-barrier; Analyst: Phil Bowden



**SQF Piute 06.29 WFDSS FSPro**

Probability; (Acres); Cumulative Acres

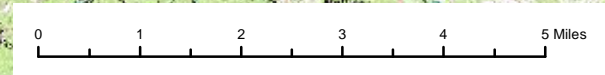
80-100%	(18,893); 18,893 acres
60-79%	(6,441); 25,334 acres
40-59%	(6,291); 31,625 acres
20-39%	(8,599); 40,224 acres
5-19%	(12,776); 53,000 acres
0.2-4.9%	(31,662); 84,662 acres
<0.2%	(14,863); 99,525 acres

06/29 FSPro Perim

06/29 FSPro Barrier

**Ownership**

- National Forest
- Non-National Forest
- Existing Wilderness
- 1980-2007 Fires (>100 ac)



1:120,000

R5 FAM  
Fire Behavior Branch, Predictive Services  
McClellan, CA

with support from:  
WFDSS  
Wildland Fire  
Decision Support System

RMRS  
Rocky Mtn. Research Station  
Note: Projection based on preliminary data

DEMOCRAT (2001)

COW (1982)

LUCAS #4 (1994)

RICH BAR (1985)

HAVILAH (1988)

WELLS (2005)

CALIENTE (2003)

PEAK (2000)

OREJANO (1996)

(1984)

KING (2000)

BASIN (2003)

INDIAN (1996)

GALIENTE (1985)

LORLAINE (1990)

SAND CYN (1993)

STEVENSON (1998)

THORNTON (1997)

COTTONWOOD (2006)