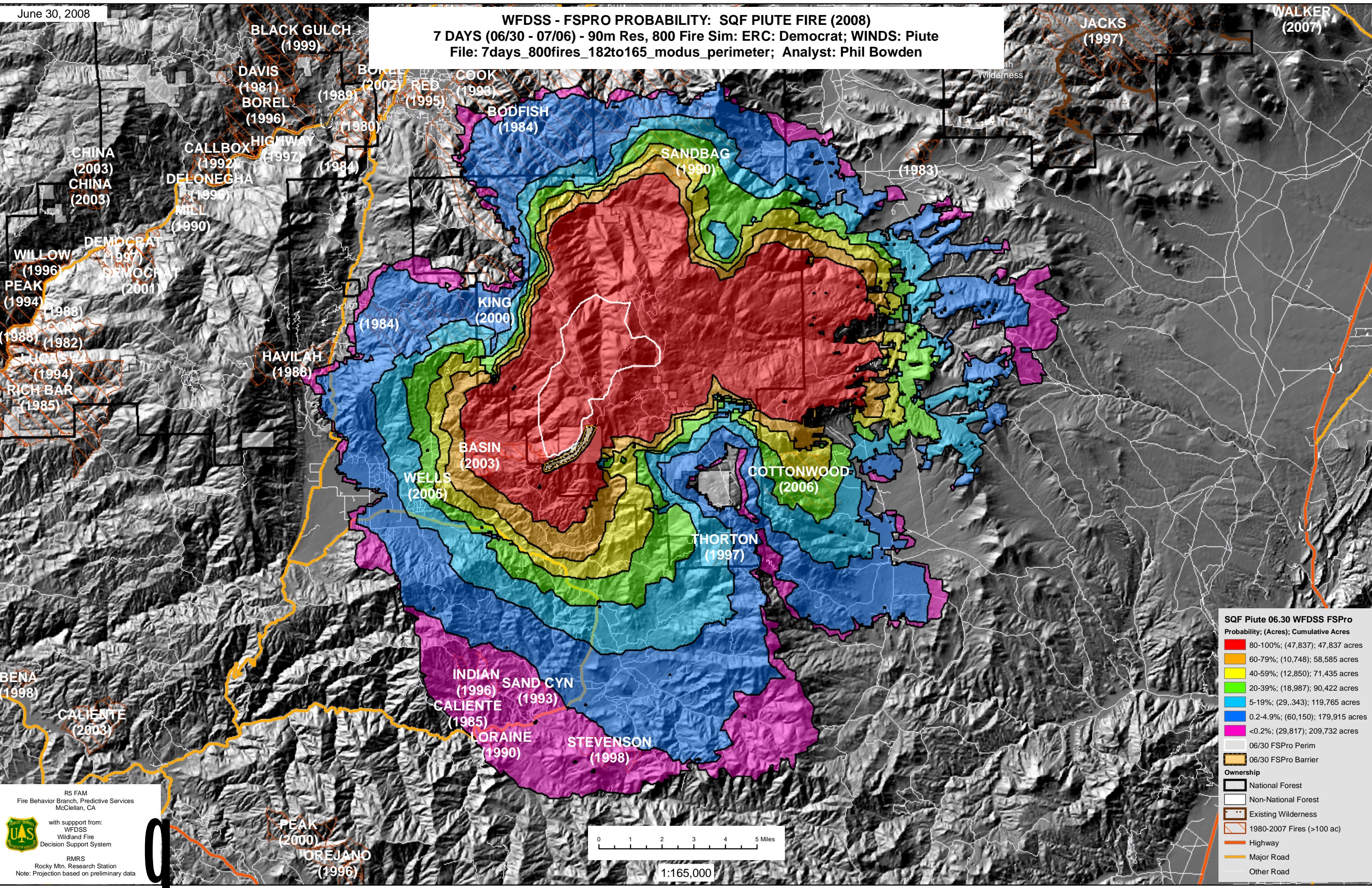


WFDSS - FSPRO PROBABILITY: SQF PIUTE FIRE (2008)
7 DAYS (06/30 - 07/06) - 90m Res, 800 Fire Sim: ERC: Democrat; WINDS: Piute
File: 7days_800fires_182to165_modus_perimeter; Analyst: Phil Bowden

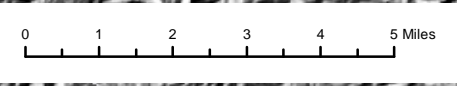


SQF Piute 06.30 WFDSS FSPro

Probability	(Acres)	Cumulative Acres
80-100%	(47,837)	47,837 acres
60-79%	(10,748)	58,585 acres
40-59%	(12,850)	71,435 acres
20-39%	(18,987)	90,422 acres
5-19%	(29,343)	119,765 acres
0.2-4.9%	(60,150)	179,915 acres
<0.2%	(29,817)	209,732 acres

Ownership

- 06/30 FSPro Perim
- 06/30 FSPro Barrier
- National Forest
- Non-National Forest
- Existing Wilderness
- 1980-2007 Fires (>100 ac)
- Highway
- Major Road
- Other Road



1:165,000

R5 FAM
Fire Behavior Branch, Predictive Services
McClellan, CA

with support from:
WFDSS
Wildland Fire
Decision Support System

RMRS
Rocky Mtn. Research Station
Note: Projection based on preliminary data

