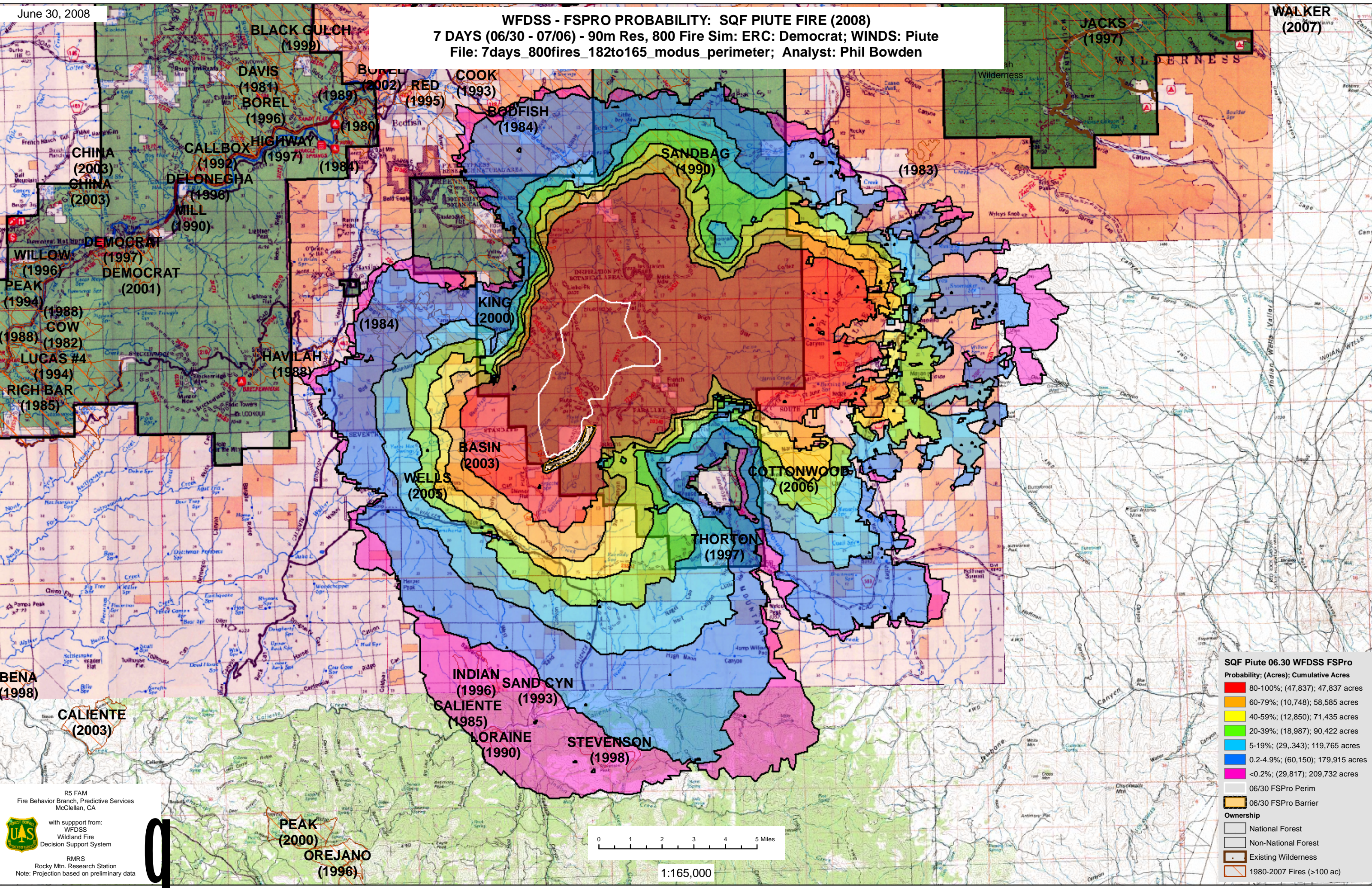


### WFDSS - FSPRO PROBABILITY: SQF PIUTE FIRE (2008) 7 DAYS (06/30 - 07/06) - 90m Res, 800 Fire Sim: ERC: Democrat; WINDS: Piute File: 7days\_800fires\_182to165\_modus\_perimeter; Analyst: Phil Bowden

WALKER  
(2007)



**SQF Piute 06.30 WFDSS FSPro**

Probability	(Acres)	Cumulative Acres
80-100%	(47,837)	47,837 acres
60-79%	(10,748)	58,585 acres
40-59%	(12,850)	71,435 acres
20-39%	(18,987)	90,422 acres
5-19%	(29,343)	119,765 acres
0.2-4.9%	(60,150)	179,915 acres
<0.2%	(29,817)	209,732 acres

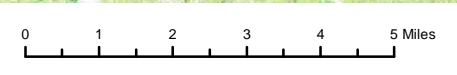
  

Symbol	Description
[Grey outline]	06/30 FSPro Perim
[Yellow outline]	06/30 FSPro Barrier
[White box]	National Forest
[Light Grey box]	Non-National Forest
[Dashed line]	Existing Wilderness
[Red outline]	1980-2007 Fires (>100 ac)

R5 FAM  
Fire Behavior Branch, Predictive Services  
McClellan, CA

with support from:  
WFDSS  
Wildland Fire  
Decision Support System

RMRS  
Rocky Mtn. Research Station  
Note: Projection based on preliminary data



1:165,000