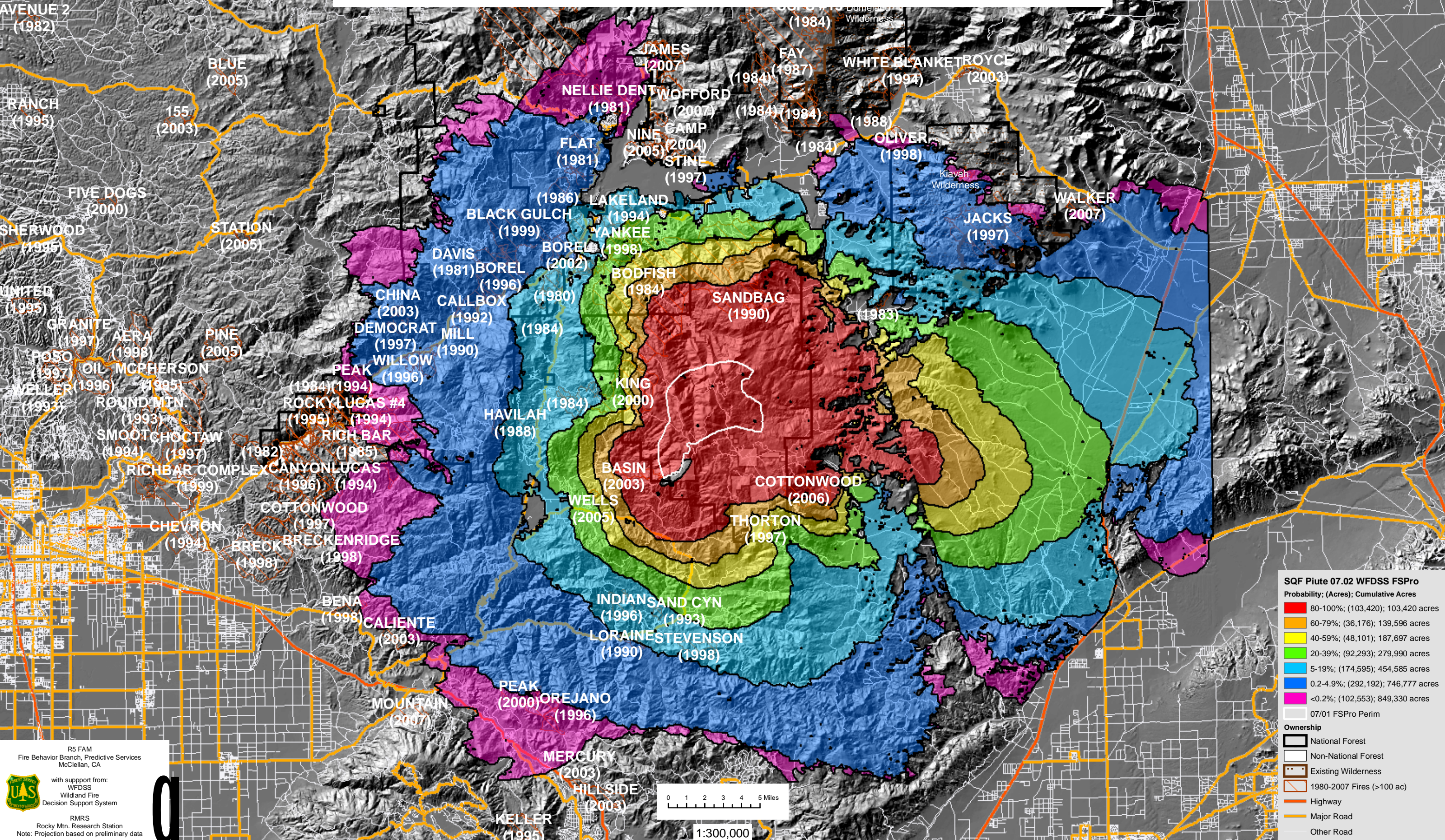


STAGEL (2004)

RED (2005)

**WFDSS - FSPRO PROBABILITY: SQF PIUTE FIRE (2008)**  
**7 DAYS (07/02 - 07/08) - 90m Res, 500 Fire Sim: ERC: Democrat; WINDS: Piute**  
**File: Piute\_Landfire\_fuels\_calibration; Analyst: Berni Bahro**  
**NOTE: Assessment at east is at the edge of LANDFIRE map tile 13 (desert) thus the different fire spread**



**SQF Piute 07.02 WFDSS FSPRO**  
**Probability; (Acres); Cumulative Acres**

- 80-100%; (103,420); 103,420 acres
- 60-79%; (36,176); 139,596 acres
- 40-59%; (48,101); 187,697 acres
- 20-39%; (92,293); 279,990 acres
- 5-19%; (174,595); 454,585 acres
- 0.2-4.9%; (292,192); 746,777 acres
- <0.2%; (102,553); 849,330 acres
- 07/01 FSPRO Perim

**Ownership**

- National Forest
- Non-National Forest
- Existing Wilderness
- 1980-2007 Fires (>100 ac)
- Highway
- Major Road
- Other Road

R5 FAM  
 Fire Behavior Branch, Predictive Services  
 McClellan, CA

with support from:  
 WFDSS  
 Wildland Fire  
 Decision Support System

RMRS  
 Rocky Mtn. Research Station  
 Note: Projection based on preliminary data

