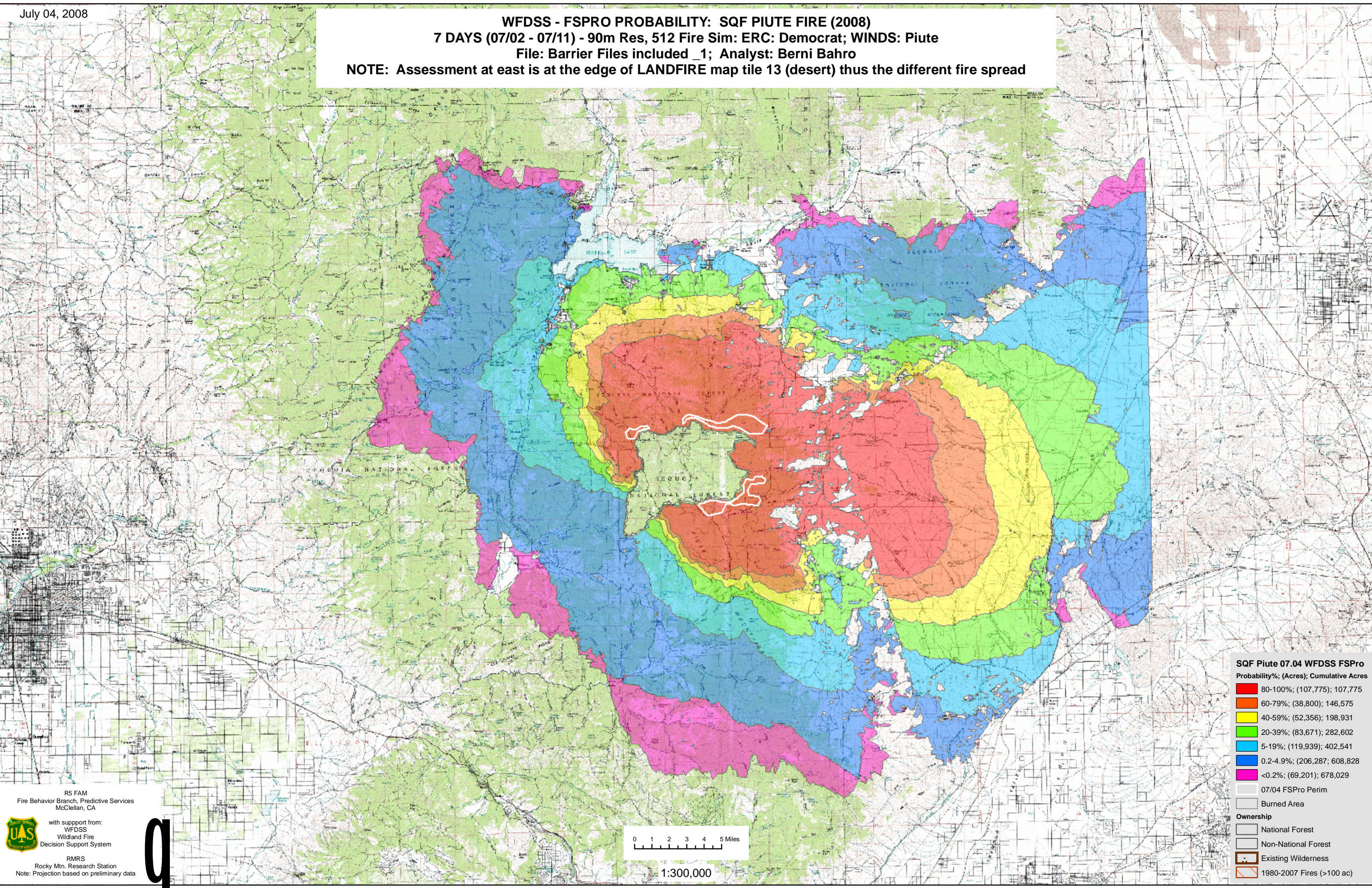


WFDSS - FSPRO PROBABILITY: SQF PIUTE FIRE (2008)
7 DAYS (07/02 - 07/11) - 90m Res, 512 Fire Sim: ERC: Democrat; WINDS: Piute
File: Barrier Files included _1; Analyst: Berni Bahro
NOTE: Assessment at east is at the edge of LANDFIRE map tile 13 (desert) thus the different fire spread



SQF Piute 07.04 WFDSS FSPRO

Probability%	(Acres)	Cumulative Acres
80-100%	(107,775)	107,775
60-79%	(38,800)	146,575
40-59%	(52,356)	198,931
20-39%	(83,671)	282,602
5-19%	(119,939)	402,541
0.2-4.9%	(206,287)	608,828
<0.2%	(69,201)	678,029

Symbol	Description
[Pink outline]	07/04 FSPRO Perim
[White area]	Burned Area
Ownership	
[Green area]	National Forest
[Light Green area]	Non-National Forest
[Brown area]	Existing Wilderness
[Red outline]	1980-2007 Fires (>100 ac)

R5 FAM
 Fire Behavior Branch, Predictive Services
 McClellan, CA

with support from:
 WFDSS
 Wildland Fire
 Decision Support System

RMRS
 Rocky Mtn. Research Station
 Note: Projection based on preliminary data



q

0 1 2 3 4 5 Miles
 1:300,000