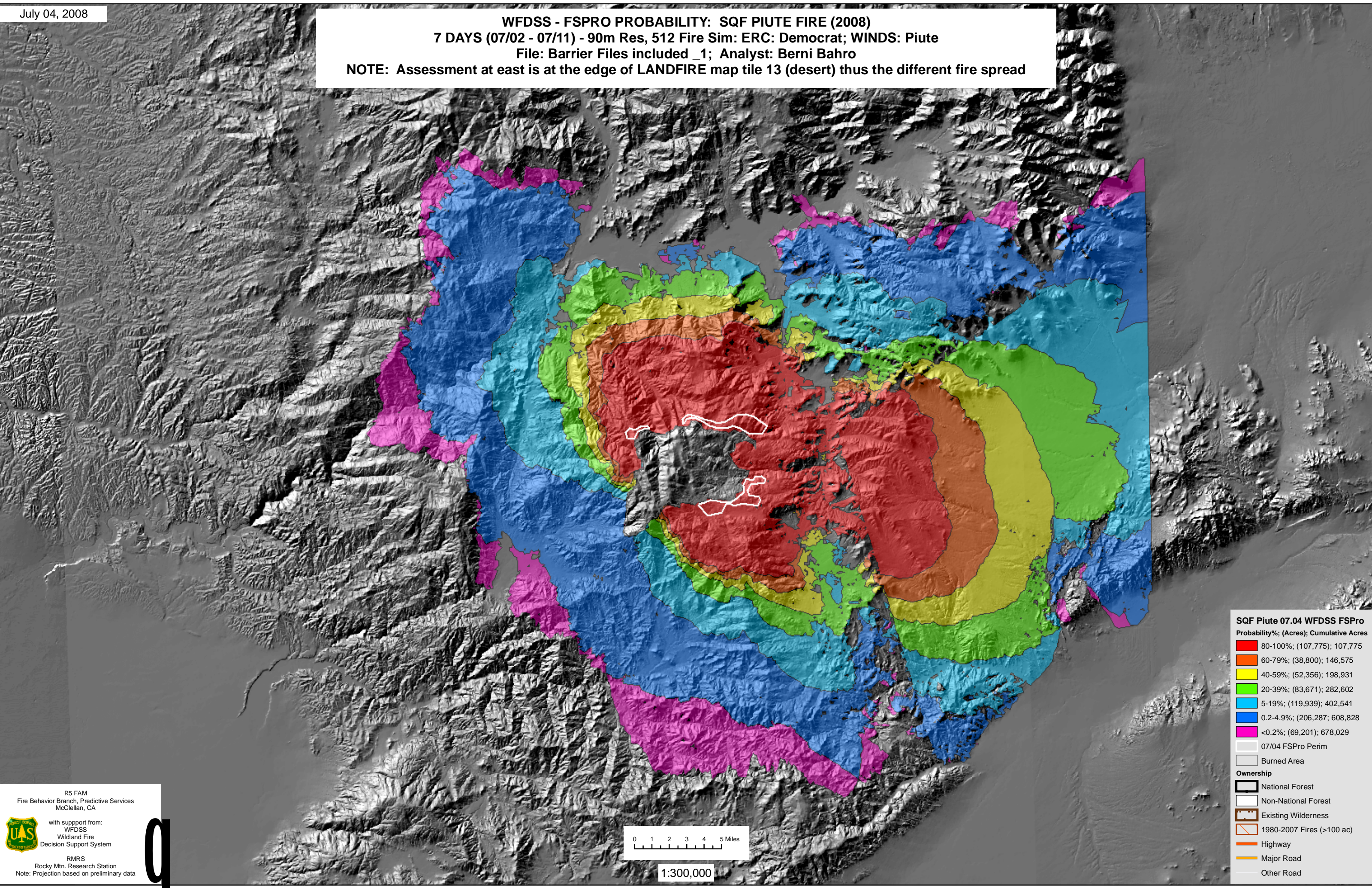


WFDSS - FSPRO PROBABILITY: SQF PIUTE FIRE (2008)
7 DAYS (07/02 - 07/11) - 90m Res, 512 Fire Sim: ERC: Democrat; WINDS: Piute
File: Barrier Files included _1; Analyst: Berni Bahro
NOTE: Assessment at east is at the edge of LANDFIRE map tile 13 (desert) thus the different fire spread



SQF Piute 07.04 WFDSS FSPRO

Probability%; (Acres); Cumulative Acres

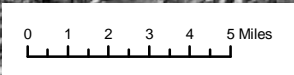
- 80-100%; (107,775); 107,775
- 60-79%; (38,800); 146,575
- 40-59%; (52,356); 198,931
- 20-39%; (83,671); 282,602
- 5-19%; (119,939); 402,541
- 0.2-4.9%; (206,287); 608,828
- <0.2%; (69,201); 678,029

07/04 FSPRO Perim

Burned Area

Ownership

- National Forest
- Non-National Forest
- Existing Wilderness
- 1980-2007 Fires (>100 ac)
- Highway
- Major Road
- Other Road



1:300,000

R5 FAM
Fire Behavior Branch, Predictive Services
McClellan, CA

with support from:
WFDSS
Wildland Fire
Decision Support System

RMRS
Rocky Mtn. Research Station
Note: Projection based on preliminary data