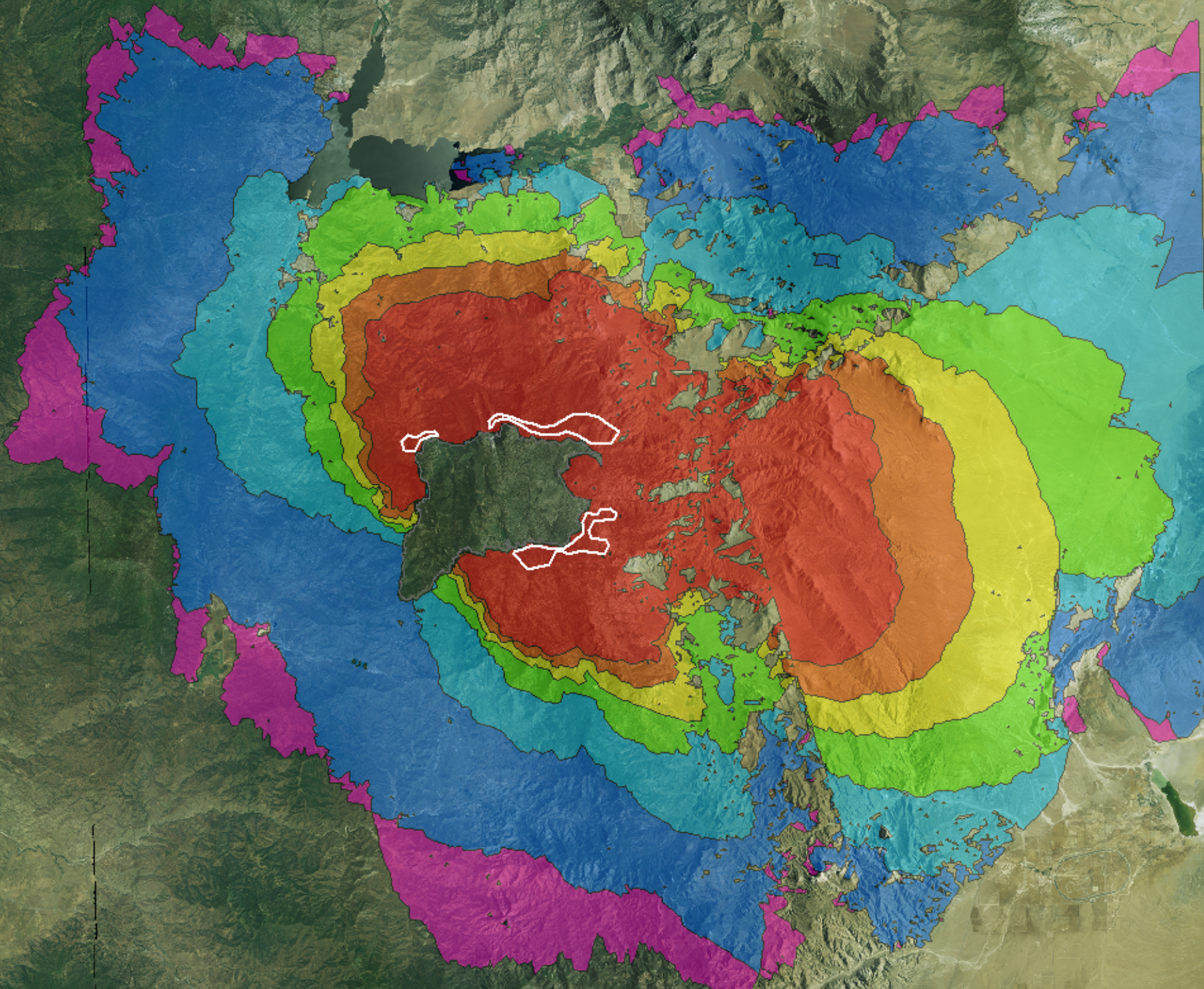


WFDSS - FSPRO PROBABILITY: SQF PIUTE FIRE (2008)
7 DAYS (07/02 - 07/11) - 90m Res, 512 Fire Sim: ERC: Democrat; WINDS: Piute
File: Barrier Files included _1; Analyst: Berni Bahro
NOTE: Assessment at east is at the edge of LANDFIRE map tile 13 (desert) thus the different fire spread



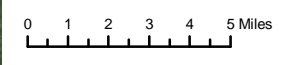
SQF Piute 07.04 WFDSS FSPRO

| Probability% | (Acres) | Cumulative Acres |
|--------------|-----------|------------------|
| 80-100% | (107,775) | 107,775 |
| 60-79% | (38,800) | 146,575 |
| 40-59% | (52,356) | 198,931 |
| 20-39% | (83,671) | 282,602 |
| 5-19% | (119,939) | 402,541 |
| 0.2-4.9% | (206,287) | 608,828 |
| <0.2% | (69,201) | 678,029 |

- 07/04 FSPRO Perim
- Burned Area

Ownership

- National Forest
- Non-National Forest
- Existing Wilderness
- 1980-2007 Fires (>100 ac)
- Highway
- Major Road
- Other Road



1:300,000

R5 FAM
 Fire Behavior Branch, Predictive Services
 McClellan, CA

with support from:
 WFDSS
 Wildland Fire
 Decision Support System

RMRS
 Rocky Mtn. Research Station
 Note: Projection based on preliminary data

