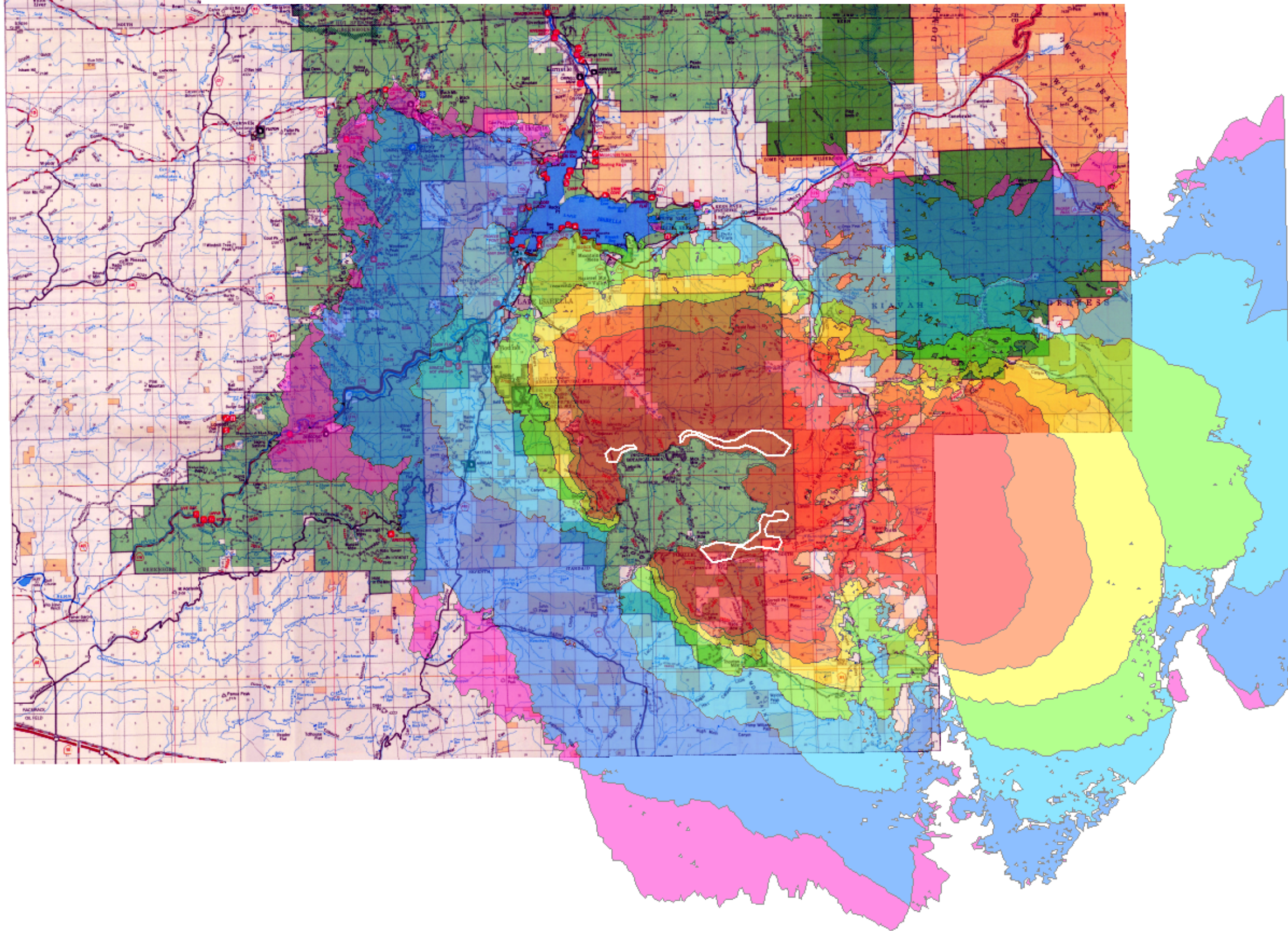


WFDSS - FSPRO PROBABILITY: SQF PIUTE FIRE (2008)
7 DAYS (07/02 - 07/11) - 90m Res, 512 Fire Sim: ERC: Democrat; WINDS: Piute

File: Barrier Files included _1; Analyst: Berni Bahro

NOTE: Assessment at east is at the edge of LANDFIRE map tile 13 (desert) thus the different fire spread



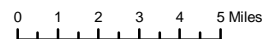
SQF Piute 07.04 WFDSS FSPro

Probability%; (Acres); Cumulative Acres

80-100%	(107,775); 107,775
60-79%	(38,800); 146,575
40-59%	(52,356); 198,931
20-39%	(83,671); 282,602
5-19%	(119,939); 402,541
0.2-4.9%	(206,287); 608,828
<0.2%	(69,201); 678,029
07/04 FSPro Perim	
Burned Area	

Ownership

National Forest
Non-National Forest
Existing Wilderness
1980-2007 Fires (>100 ac)



1:300,000

R5 FAM
Fire Behavior Branch, Predictive Services
McClellan, CA



with support from:
WFDSS
Wildland Fire
Decision Support System

RMRS
Rocky Mtn. Research Station
Note: Projection based on preliminary data

