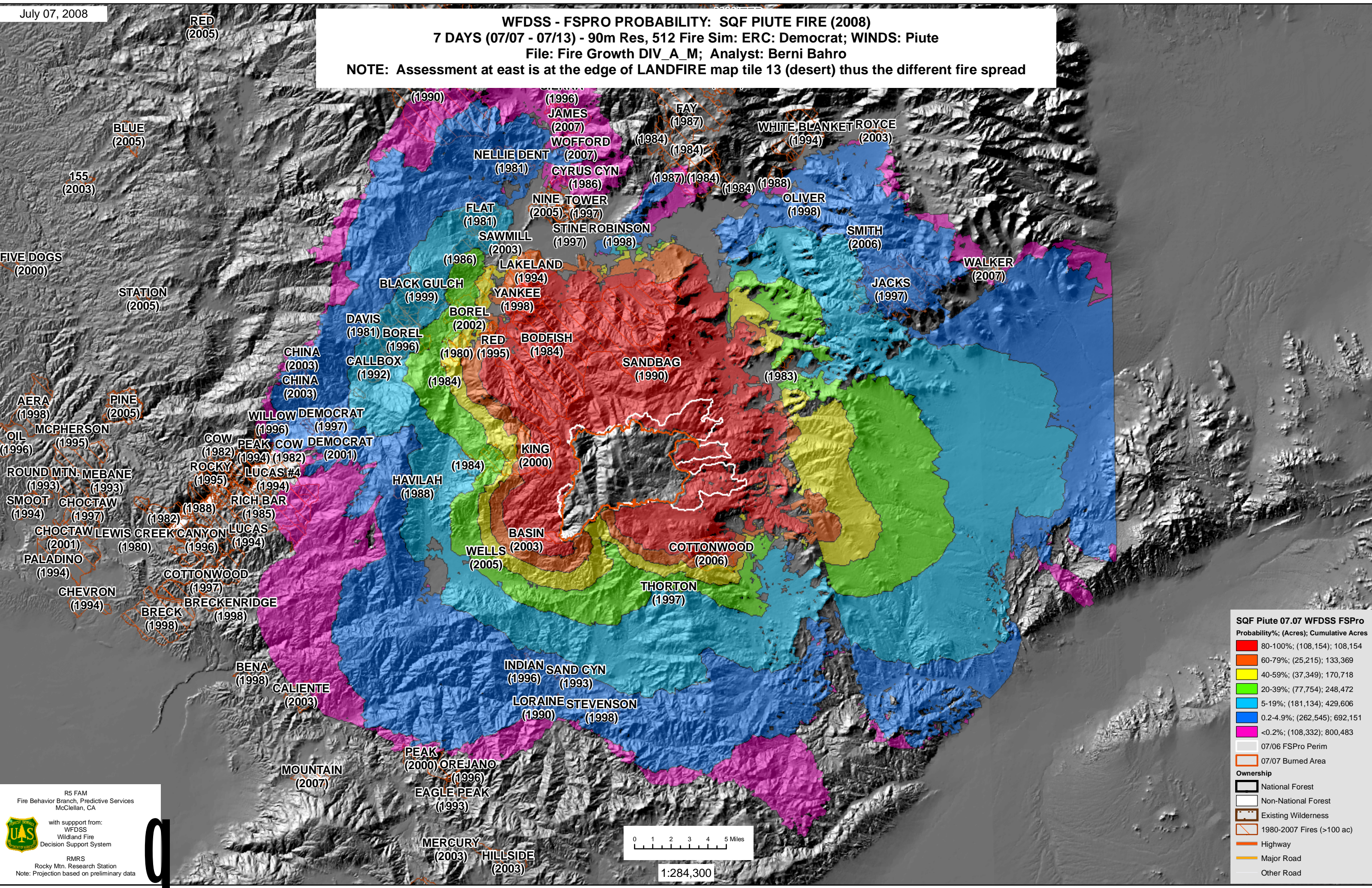


**WFDSS - FSPRO PROBABILITY: SQF PIUTE FIRE (2008)**  
**7 DAYS (07/07 - 07/13) - 90m Res, 512 Fire Sim: ERC: Democrat; WINDS: Piute**  
 File: Fire Growth DIV\_A\_M; Analyst: Berni Bahro  
**NOTE: Assessment at east is at the edge of LANDFIRE map tile 13 (desert) thus the different fire spread**



**SQF Piute 07.07 WFDSS FSPro**

Probability%; (Acres); Cumulative Acres

- 80-100%; (108,154); 108,154
- 60-79%; (25,215); 133,369
- 40-59%; (37,349); 170,718
- 20-39%; (77,754); 248,472
- 5-19%; (181,134); 429,606
- 0.2-4.9%; (262,545); 692,151
- <0.2%; (108,332); 800,483

07/06 FSPro Perim  
 07/07 Burned Area

**Ownership**

- National Forest
- Non-National Forest
- Existing Wilderness
- 1980-2007 Fires (>100 ac)
- Highway
- Major Road
- Other Road

R5 FAM  
 Fire Behavior Branch, Predictive Services  
 McClellan, CA

with support from:  
 WFDSS  
 Wildland Fire  
 Decision Support System

RMRS  
 Rocky Mtn. Research Station  
 Note: Projection based on preliminary data

