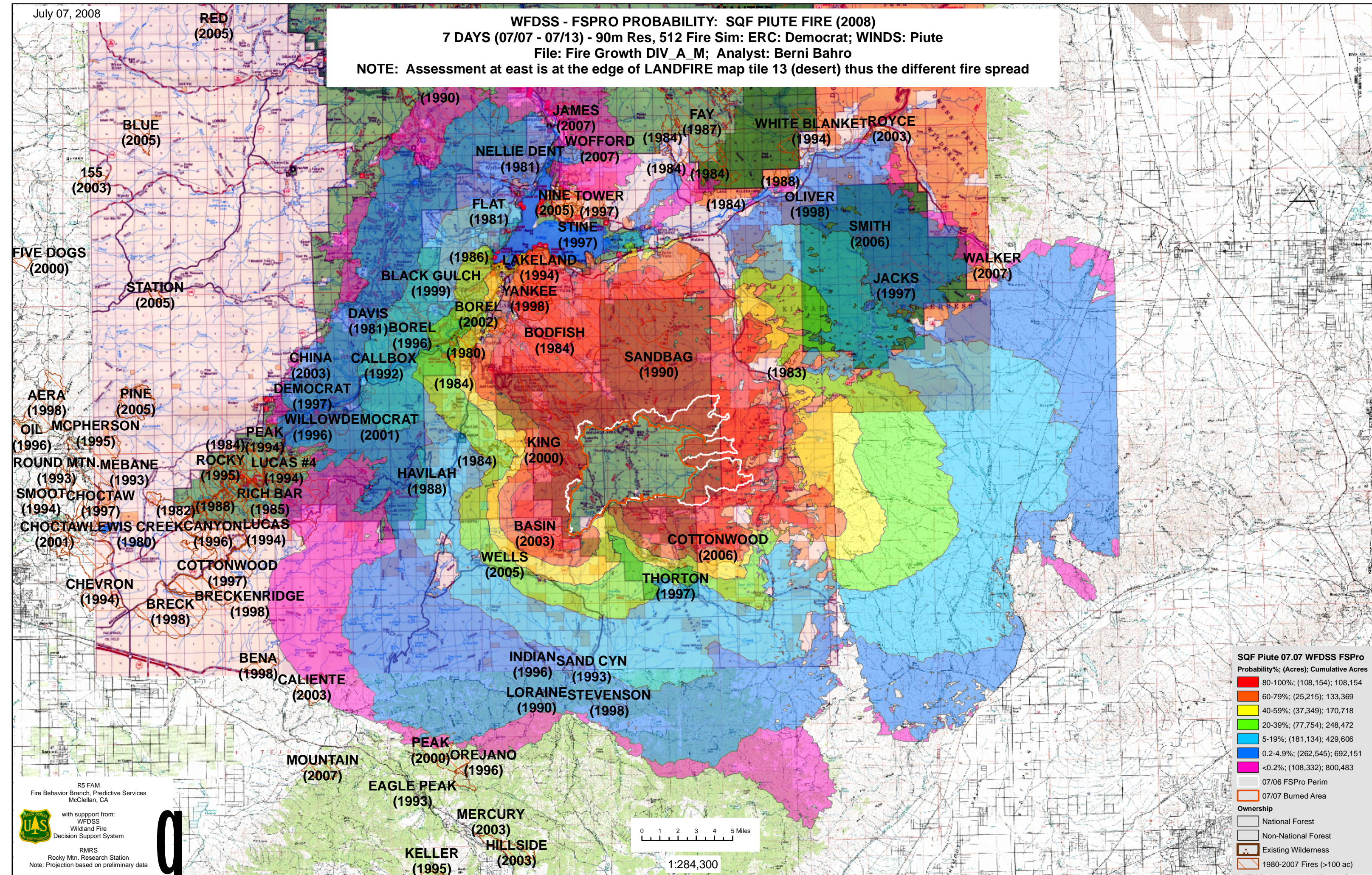


WFDSS - FSPRO PROBABILITY: SQF PIUTE FIRE (2008)  
7 DAYS (07/07 - 07/13) - 90m Res, 512 Fire Sim: ERC: Democrat; WINDS: Piute  
File: Fire Growth DIV\_A\_M; Analyst: Berni Bahro

NOTE: Assessment at east is at the edge of LANDFIRE map tile 13 (desert) thus the different fire spread



**SQF Piute 07.07 WFDSS FSPRO**

Probability%	(Acres)	Cumulative Acres
80-100%	(108,154)	108,154
60-79%	(25,215)	133,369
40-59%	(37,349)	170,718
20-39%	(77,754)	248,472
5-19%	(181,134)	429,606
0.2-4.9%	(262,545)	692,151
<0.2%	(108,332)	800,483

07/06 FSPRO Perim  
07/07 Burned Area

**Ownership**

- National Forest
- Non-National Forest
- Existing Wilderness
- 1980-2007 Fires (>100 ac)

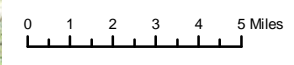
R5 FAM  
Fire Behavior Branch, Predictive Services  
McClellan, CA

with support from:  
WFDSS  
Wildland Fire  
Decision Support System

RMRS  
Rocky Mtn. Research Station  
Note: Projection based on preliminary data



q



1:284,300