

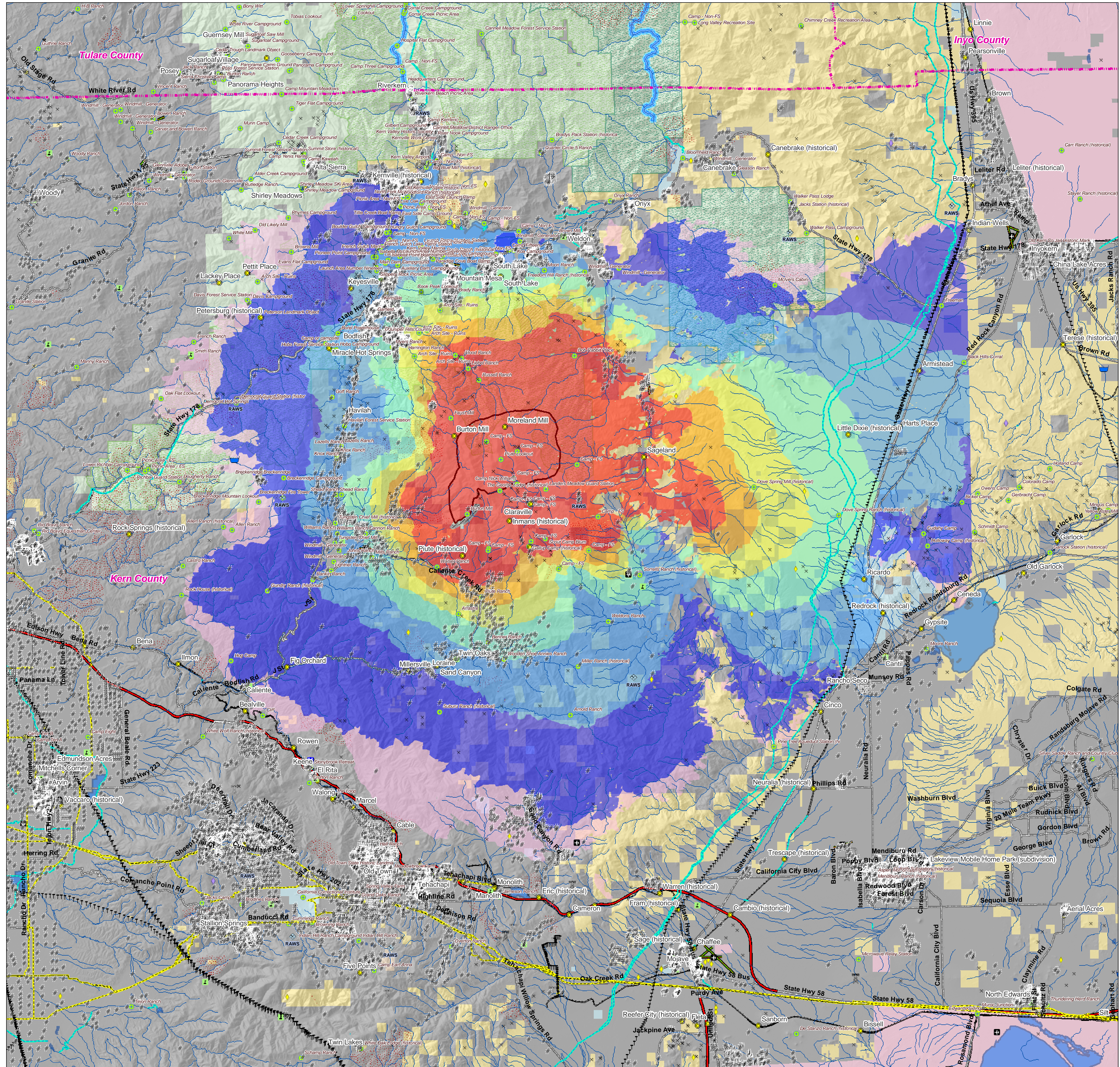


## Piute, CA

3 July 2008 T1\_B\_080703\_jk

### Major Values-at-Risk per FSPro Fire Spread Probabilities: 7 days as of 2 July 2008

- FSPro Fire Perimeter: 2 July PM
- FSPro Barrier: 30 June AM
- Past Fires 1994-2007
- FSPro Fire Spread Probabilities**
- > 80 %
- 60 - 80 %
- 40 - 60 %
- 20 - 40 %
- 5 - 20 %
- 1 - 5 %
- < 1 %
- Building Clusters
- RAWS Stations
- Water: Dams > 100af
- Water Pipeline - Aqueduct - Canal
- Powerlines
- Industrial Plant
- Power Pylon
- Power or Pumping Substation
- Communication Towers
- Oil & Gas Transmission Lines
- Airports
- Airport Runways
- Ski Resort Cables
- Hospitals
- Schools
- HAZMAT: Mines
- HAZMAT: Superfund Sites
- HAZMAT: Hazardous Waste
- Other Landmarks
- Interstates
- Major Roads
- Railways
- County Boundary
- Jurisdiction**
- Private
- State
- BLM
- Other Federal
- DOD
- USFS
- Inventoried Roadless
- Designated Wilderness
- Primitive RNA
- Wild-Scenic-Rec Rivers



\*Building Clusters represent the center of parcels where county assessor records indicate taxable improvements are present. One or more structures and other improvements may exist proximate to these point locations.

CAUTION: Defer to air photos or local knowledge for exact structure and other feature locations.

\*\*Recreation residences and special use structures data are not available from USFS and are not identified or analyzed in this report.

\*\*\*Mines may pose a threat to fire fighter safety.