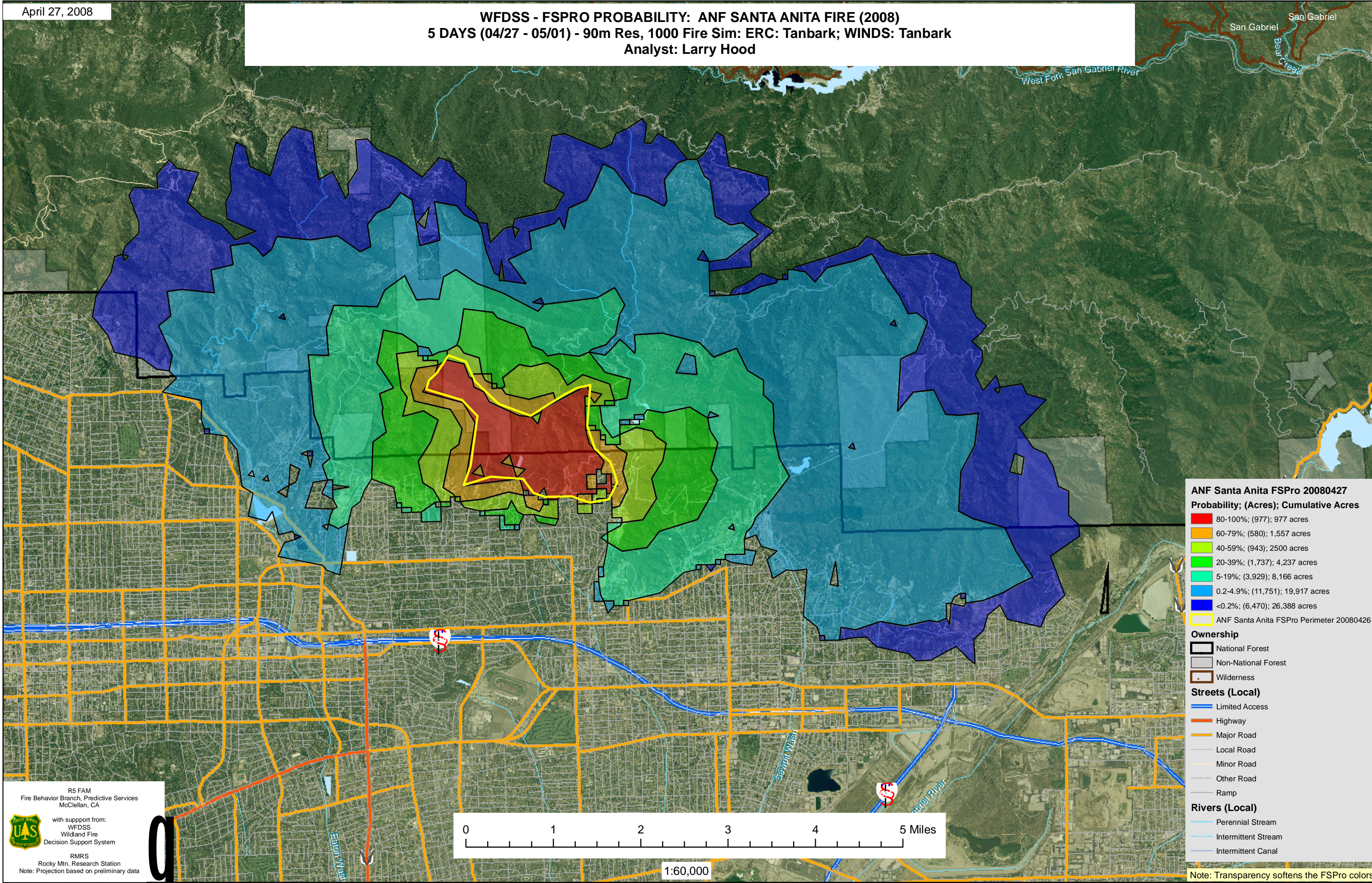


WFDSS - FSPRO PROBABILITY: ANF SANTA ANITA FIRE (2008)
5 DAYS (04/27 - 05/01) - 90m Res, 1000 Fire Sim: ERC: Tanbark; WINDS: Tanbark
Analyst: Larry Hood



ANF Santa Anita FSPro 20080427
Probability; (Acres); Cumulative Acres

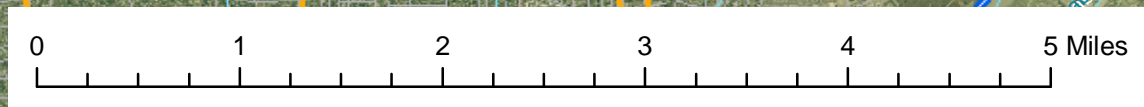
80-100%	(977); 977 acres
60-79%	(580); 1,557 acres
40-59%	(943); 2,500 acres
20-39%	(1,737); 4,237 acres
5-19%	(3,929); 8,166 acres
0.2-4.9%	(11,751); 19,917 acres
<0.2%	(6,470); 26,388 acres
Yellow outline: ANF Santa Anita FSPro Perimeter 20080426	

- Ownership**
- National Forest
 - Non-National Forest
 - Wilderness
- Streets (Local)**
- Limited Access
 - Highway
 - Major Road
 - Local Road
 - Minor Road
 - Other Road
 - Ramp
- Rivers (Local)**
- Perennial Stream
 - Intermittent Stream
 - Intermittent Canal

R5 FAM
Fire Behavior Branch, Predictive Services
McClellan, CA

with support from:
WFDSS
Wildland Fire
Decision Support System

RMRS
Rocky Mtn. Research Station
Note: Projection based on preliminary data



Note: Transparency softens the FSPro colors