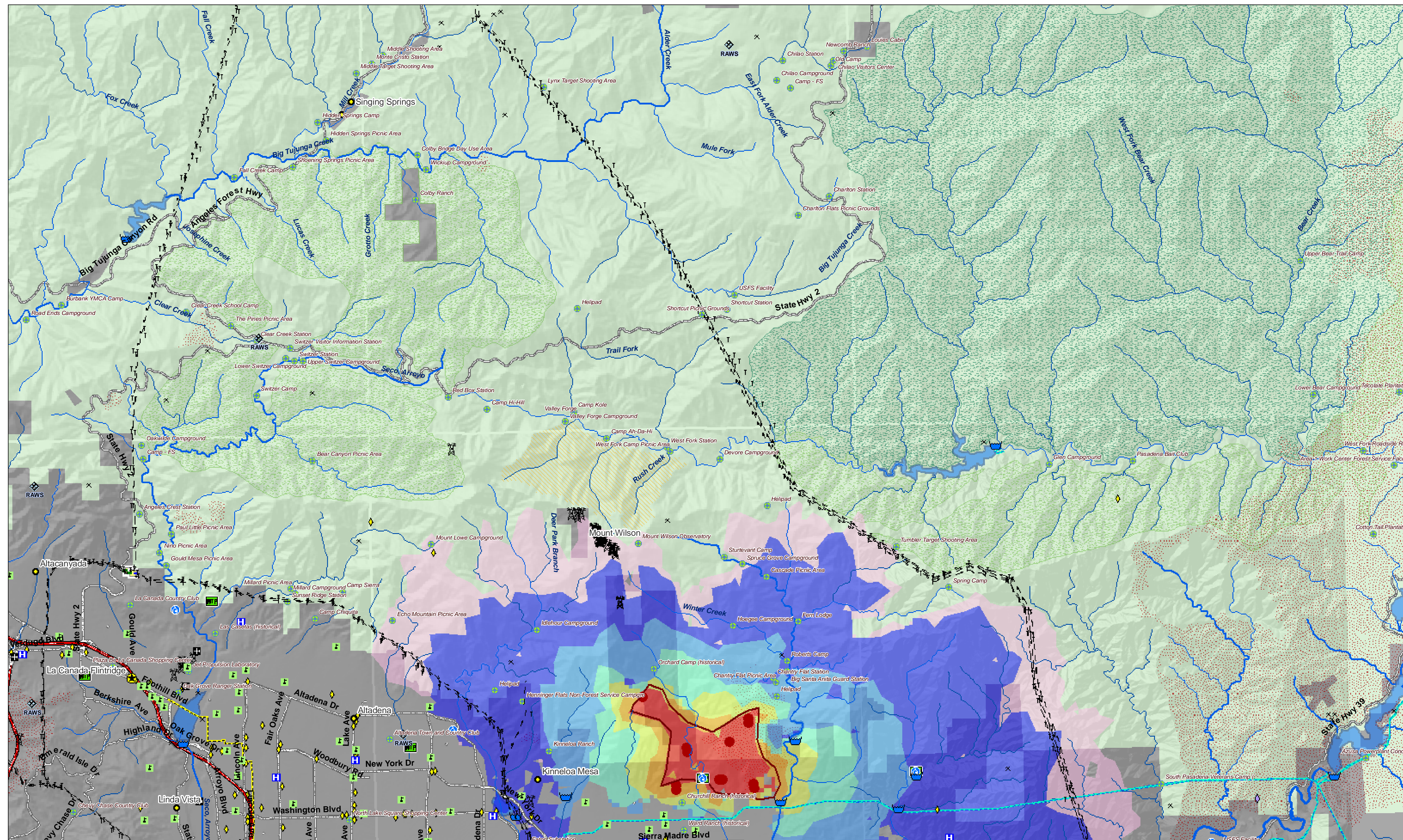


### Santa Anita, CA

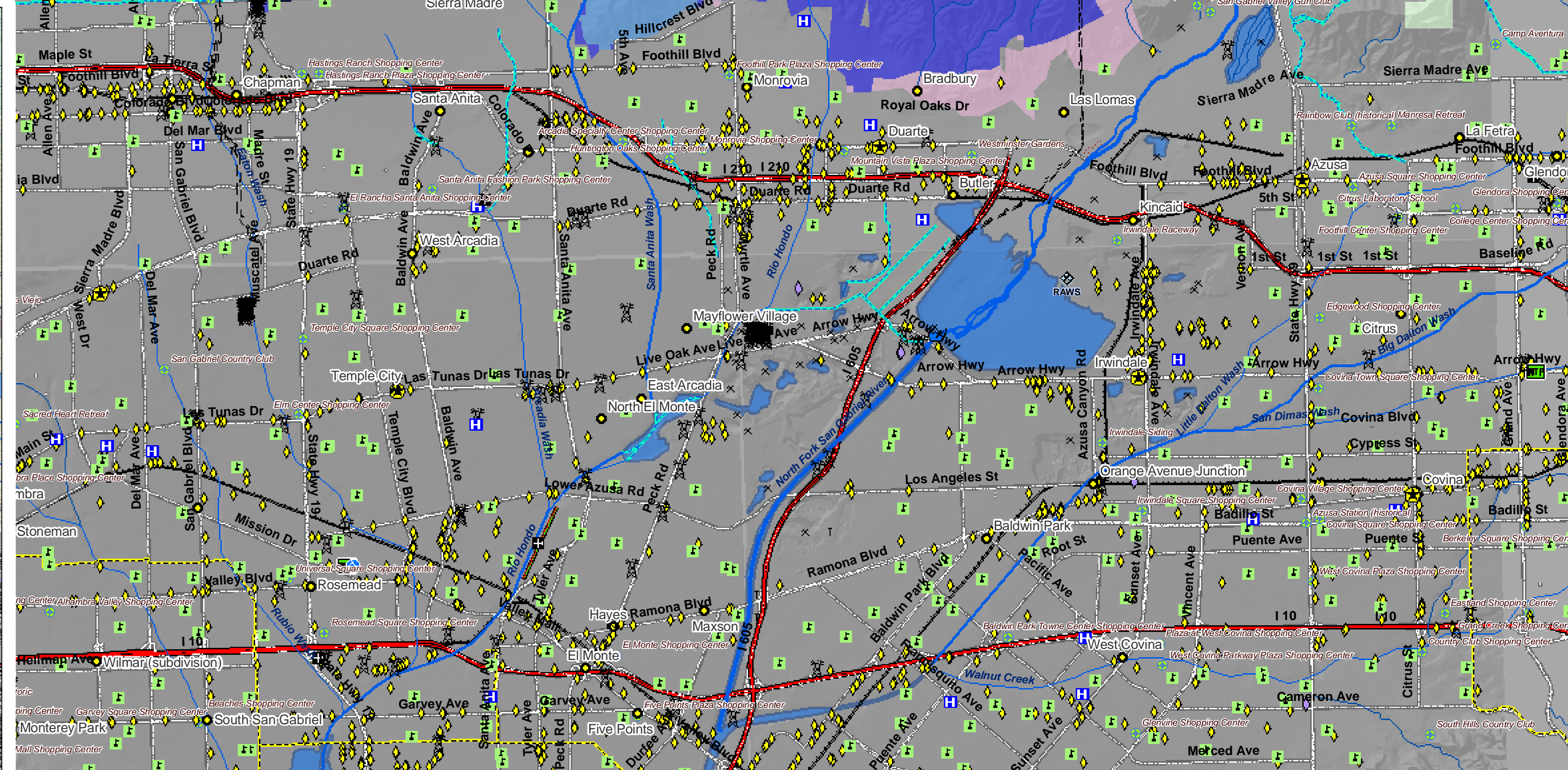
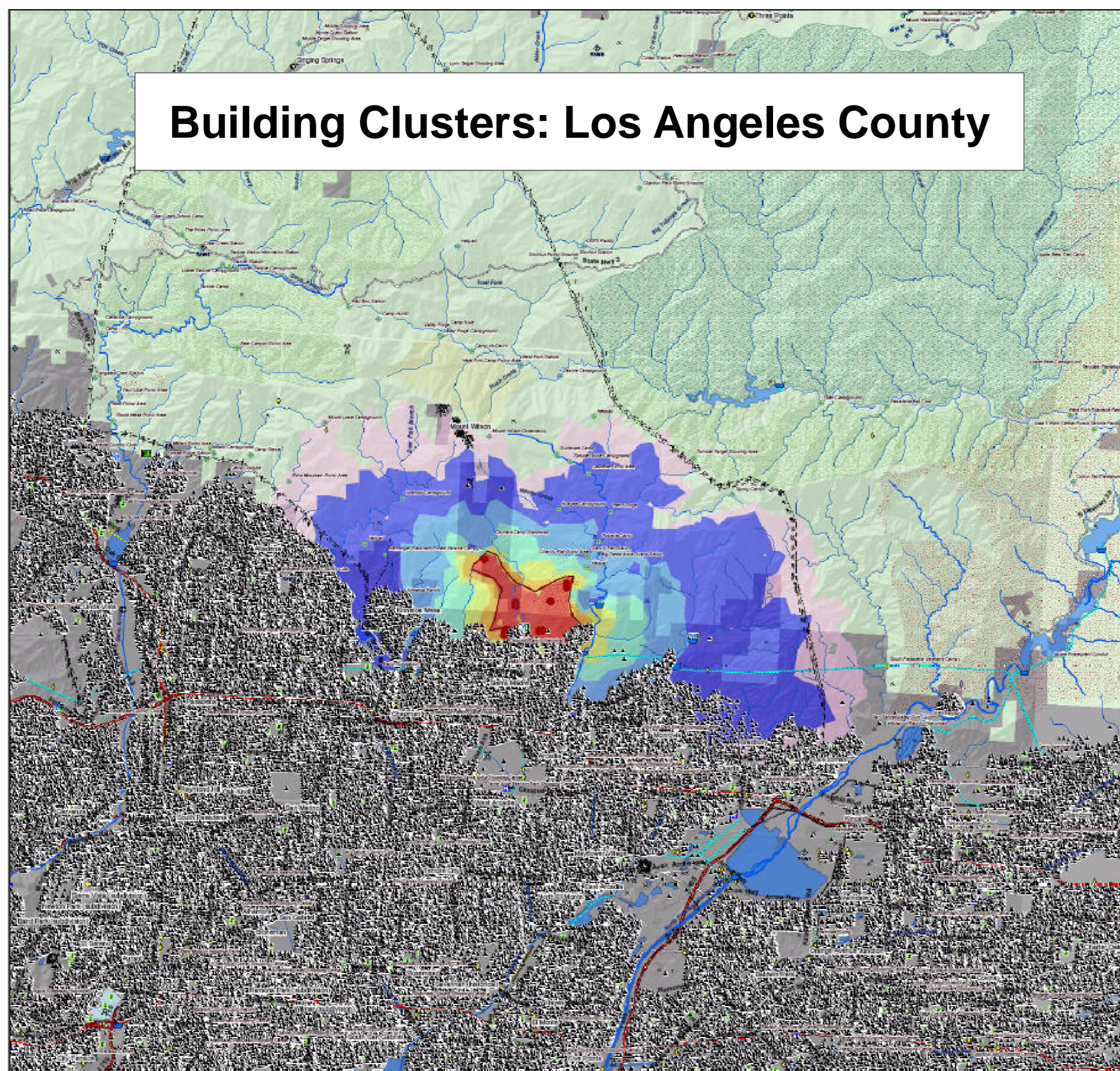
27 April 2008 T1\_A\_080427\_jd

Major Values-at-Risk per  
FSPRO Fire Spread Probabilities:  
5 days as of 26 April 2008

- Fire Perimeter: 26 April AM
- MODIS Points 7 days: 27 April 2008 1600 PM
  - ! 27 April 2008
  - ! 26 April 2008
  - ! Prior 6 Days
- Past Fires 2000-2006
- FSPRO Fire Spread: 5 days from 26 April 2008
  - > 80 %
  - 60 - 80 %
  - 40 - 60 %
  - 20 - 40 %
  - 5 - 20 %
  - 1 - 5 %
  - < 1 %
- # Building Clusters: Los Angeles County
- Z RAWs Stations
- ~ Water: Dams > 100af
- | Water Supply: Intakes
- O Water Treatment Plants
- Water Pipeline - Aqueduct - Canal
- Powerlines
- D Industrial Plant
- Power Pylon
- Power or Pumping Substation
- X Communication Towers
- Oil & Gas Transmission Lines
- ✈ Airports
- Airport Runways
- |||| Ski Resort Cables
- V Hospitals
- n Schools
- C HAZMAT: Mines
- W HAZMAT: Superfund Sites
- W HAZMAT: Hazardous Waste
- \* Other Landmarks
- Interstates
- Major Roads
- Railways
- Jurisdiction**
  - Private
  - State
  - USFS
  - Inventoried Roadless
  - Designated Wilderness
  - Experimental RNA



### Building Clusters: Los Angeles County



\*Building Clusters represent the center of parcels where county assessor records indicate taxable improvements are present. One or more structures and other improvements may exist proximate to these point locations.

CAUTION: Defer to air photos or local knowledge for exact structure and other feature locations.