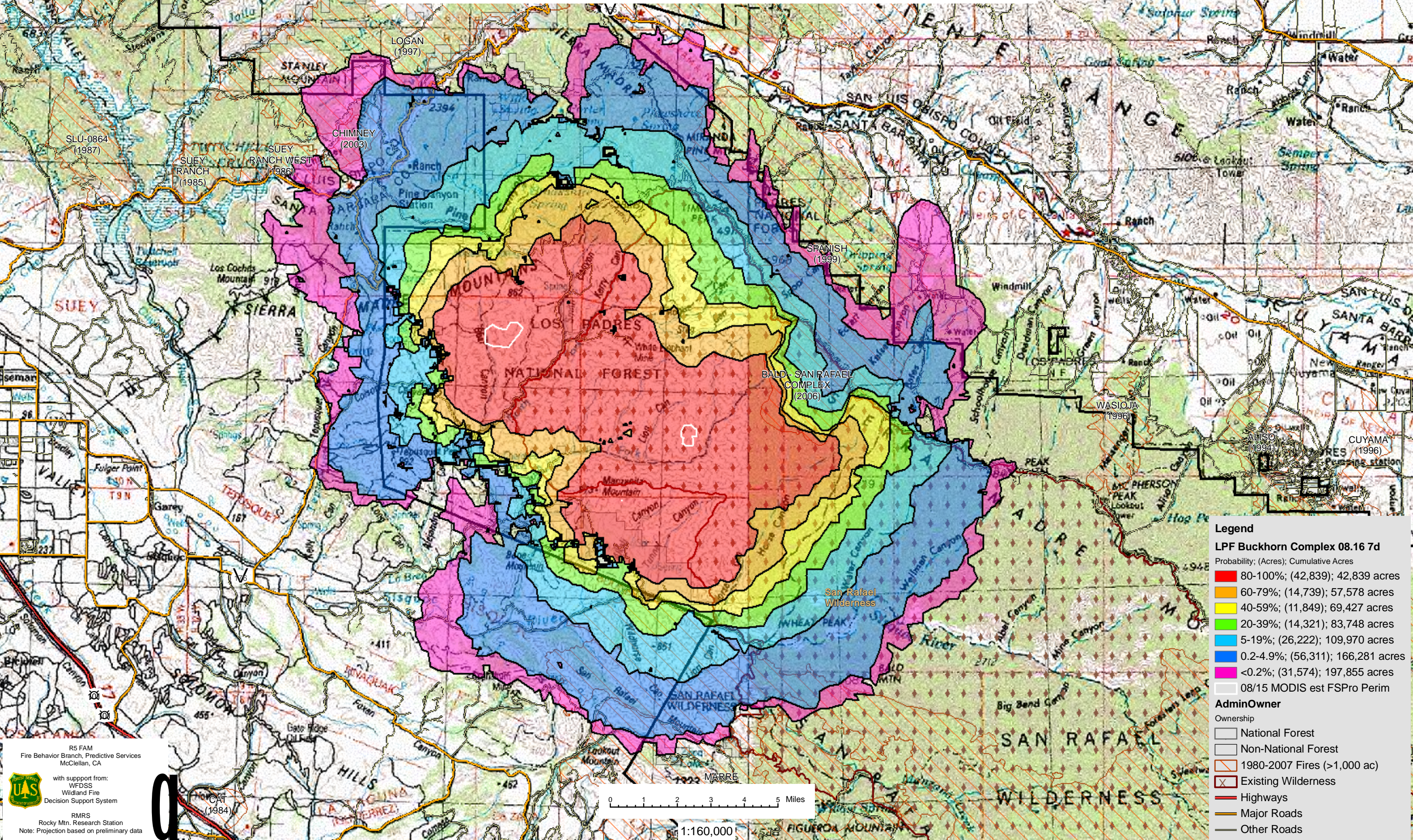


August 16, 2008

ROTTA/PARSONS ESCAPE (1983)  
BALD Mtn. (1995)

**WFDSS - FSPRO PROBABILITY: LPF BUCKHORN COMPLEX (2008)**  
08/15 - 7 DAYS - 90m Res; 1000 Fire Sim; ERC: Figueroa WINDS: Figueroa;  
File: Buckhorn\_Calibration\_3; Analyst: Berni Bahro

For more information about WFDSS:  
[http://wfdss.usgs.gov/wfdss/wfdss\\_home.html](http://wfdss.usgs.gov/wfdss/wfdss_home.html)



**Legend**

**LPF Buckhorn Complex 08.16 7d**  
Probability; (Acres); Cumulative Acres

- 80-100%; (42,839); 42,839 acres
- 60-79%; (14,739); 57,578 acres
- 40-59%; (11,849); 69,427 acres
- 20-39%; (14,321); 83,748 acres
- 5-19%; (26,222); 109,970 acres
- 0.2-4.9%; (56,311); 166,281 acres
- <0.2%; (31,574); 197,855 acres
- 08/15 MODIS est FSPro Perim

**AdminOwner**  
Ownership

- National Forest
- Non-National Forest
- 1980-2007 Fires (>1,000 ac)
- Existing Wilderness
- Highways
- Major Roads
- Other Roads

RS FAM  
Fire Behavior Branch, Predictive Services  
McClellan, CA

with support from:  
WFDSS  
Wildland Fire  
Decision Support System

RMRS  
Rocky Mtn. Research Station  
Note: Projection based on preliminary data

0 1 2 3 4 5 Miles

1:160,000