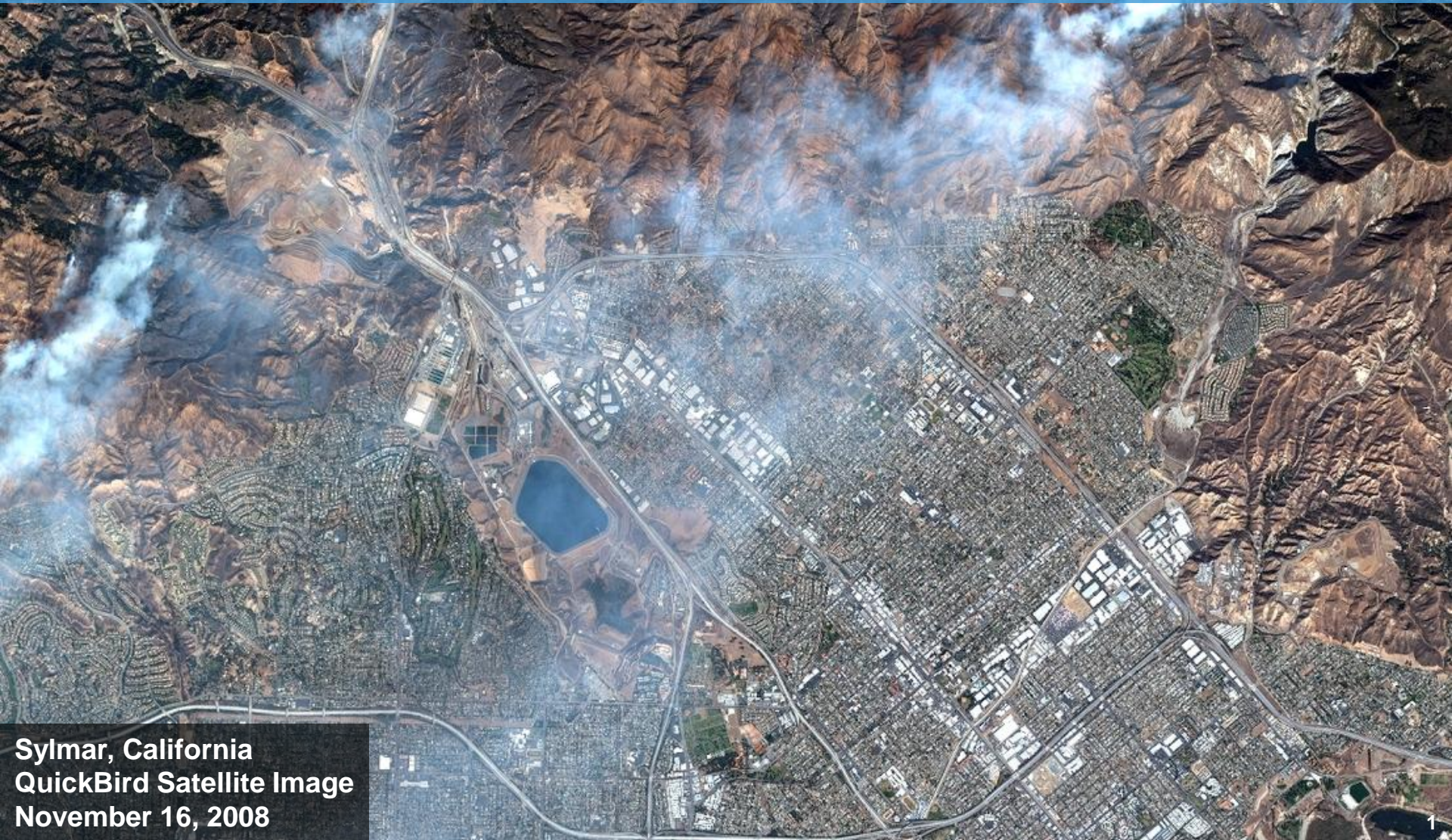


DigitalGlobe's Coverage of The Southern California Wildfires November 14-16, 2008



Sylmar, California
QuickBird Satellite Image
November 16, 2008

DigitalGlobe's Coverage of the Tea and Sayre Wildfires: November 14-16, 2008





DigitalGlobe's Coverage of the Sayre Fire Near Los Angeles: November 16, 2008

On Sunday, November 16th, DigitalGlobe's QuickBird satellite collected a long strip of imagery that included the Sayre wildfire, Sylmar, California and a smoke-covered Los Angeles.

The imagery clearly shows the wildfire (which was still burning) and visually details the aftermath of the fire that swept through the Oakridge Mobile Home Park on November 15th, destroying more than 500 of the park's 600 homes.



Sayre Fire (still burning)

Oakridge Mobile Home Park

Los Angeles Intl Airport

QuickBird Catalog ID: 1010010008D22B00





**Fire Crews
Battling the Fire**



**(See page 8
for details)**

**Destroyed
Mobile Home
Park**



**(See pages
6&7 for details)**

Fire Still Burning



**(See page 9
for details)**

Sylmar, California

Golden State Highway

Ronald Reagan Freeway



Areas of Healthy
Vegetation
Appear Red In
Color Infrared Imagery

Areas of Burned
Vegetation
Appear Black/Grey In
Color Infrared Imagery

Areas of Burned
Vegetation
Appear Black/Grey In
Color Infrared Imagery

Sylmar, California

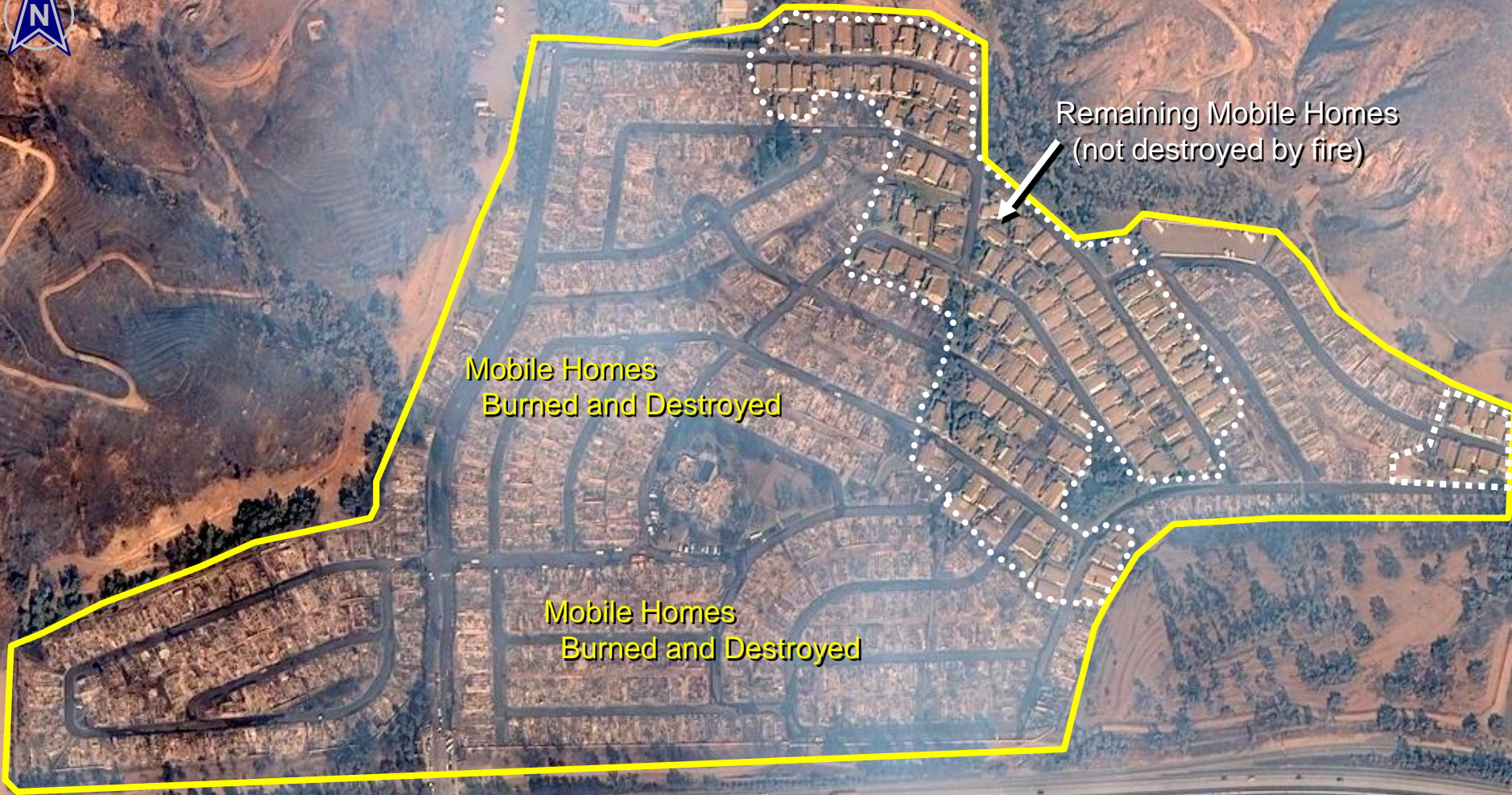
Golden State Highway

Ronald Reagan Freeway

**QuickBird Color Infrared Image
November 16, 2008**



Oakridge Mobile Home Park: Sylmar, California



Mobile Homes
Burned and Destroyed

Mobile Homes
Burned and Destroyed

Remaining Mobile Homes
(not destroyed by fire)

Interstate 210



Oakridge Mobile Home Park
(largely destroyed by fire)

Interstate 210

Utility crews working
on power lines



Fire Crews Battling the Fire



Firefighters walking on road (fire break)



Fire truck

Location of Fire:
34-19-43N
118-32-11W

Fire truck

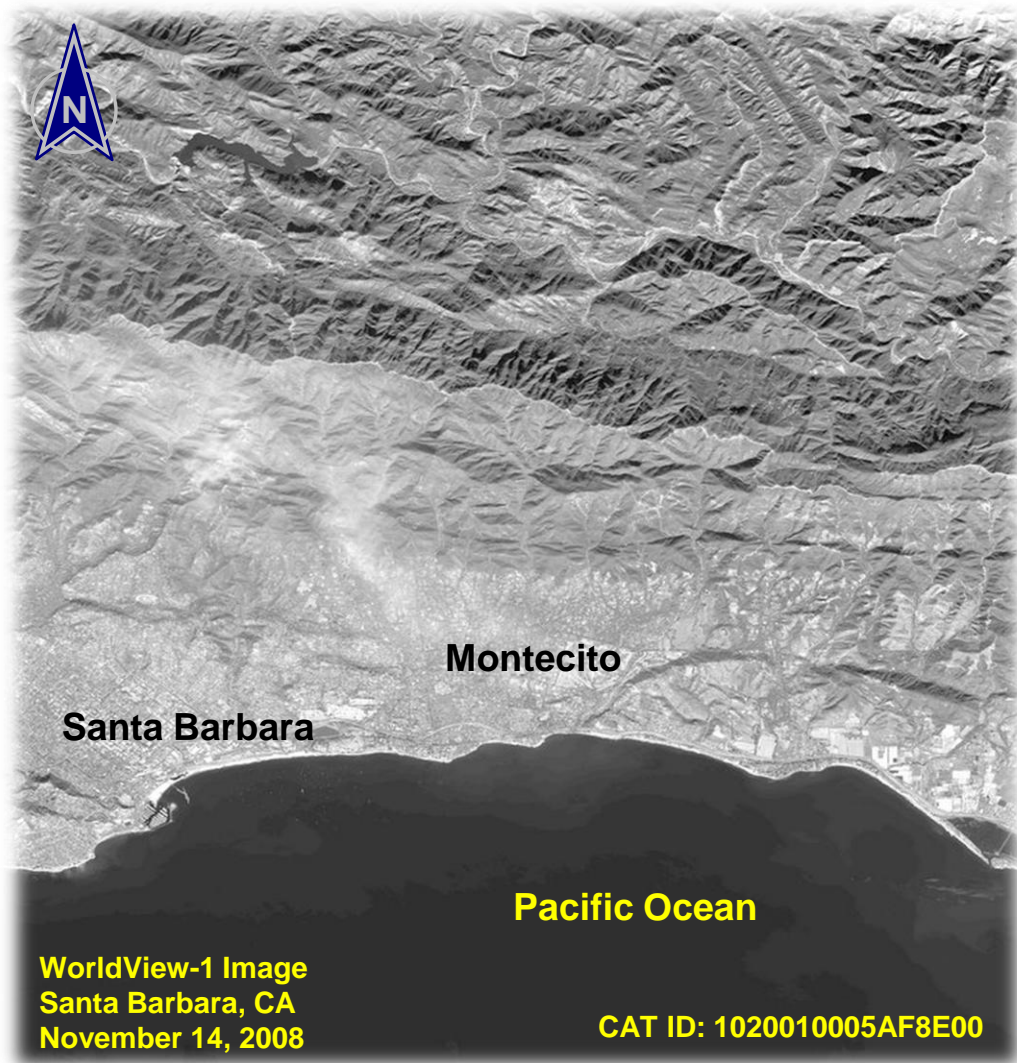
Fire Still Burning North of Sylmar



Location of Fire:
34-21-09N
118-24-22W



DigitalGlobe's Coverage of the Tea Fire Near Santa Barbara: November 14, 2008



DigitalGlobe's WorldView-1 satellite collected an image the morning after a large wildfire-- known as the "Tea Fire"--had rapidly spread through Montecito, California on the evening of November 13, 2008.

According to Nov. 15 news reports, the fire had already burned more than 1,800 acres and destroyed at least 100 homes.

Residents in the area reported seeing flames as high as 150 feet that tore their way through forestlands, canyons and expensive homes.



Destroyed Homes: Montecito, California



Sherman Rd

192

Conejo Rd

Destroyed Homes





Mount Calvary Benedictine Monastery

Destroyed
Monastery



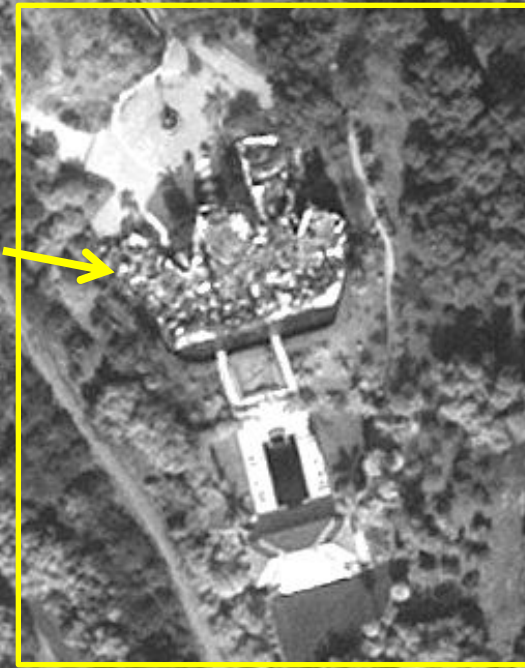


Destroyed Mansion: Montecito, California



W Mountain Drive

**Roof Burned
and Building
Probably
Destroyed**



Before the Fire



QuickBird Image via
Google Earth



WorldView-1 Image
November 14, 2008

Some Homes Devastated by Fire, Others Next Door Spared



Las Alturas Circle

Camino Alto

-  = Homes Destroyed By Fire
-  = Homes Spared



Fire-Fighting Helicopters in the Area

Photo of Erickson S-64 Helitanker
Fighting the Tea Fire



Photo by: Michael Macor—The Chronicle

Probable Erickson S-64 Aircrane
Helitanker In Flight

