



# Sayre Fire, CA

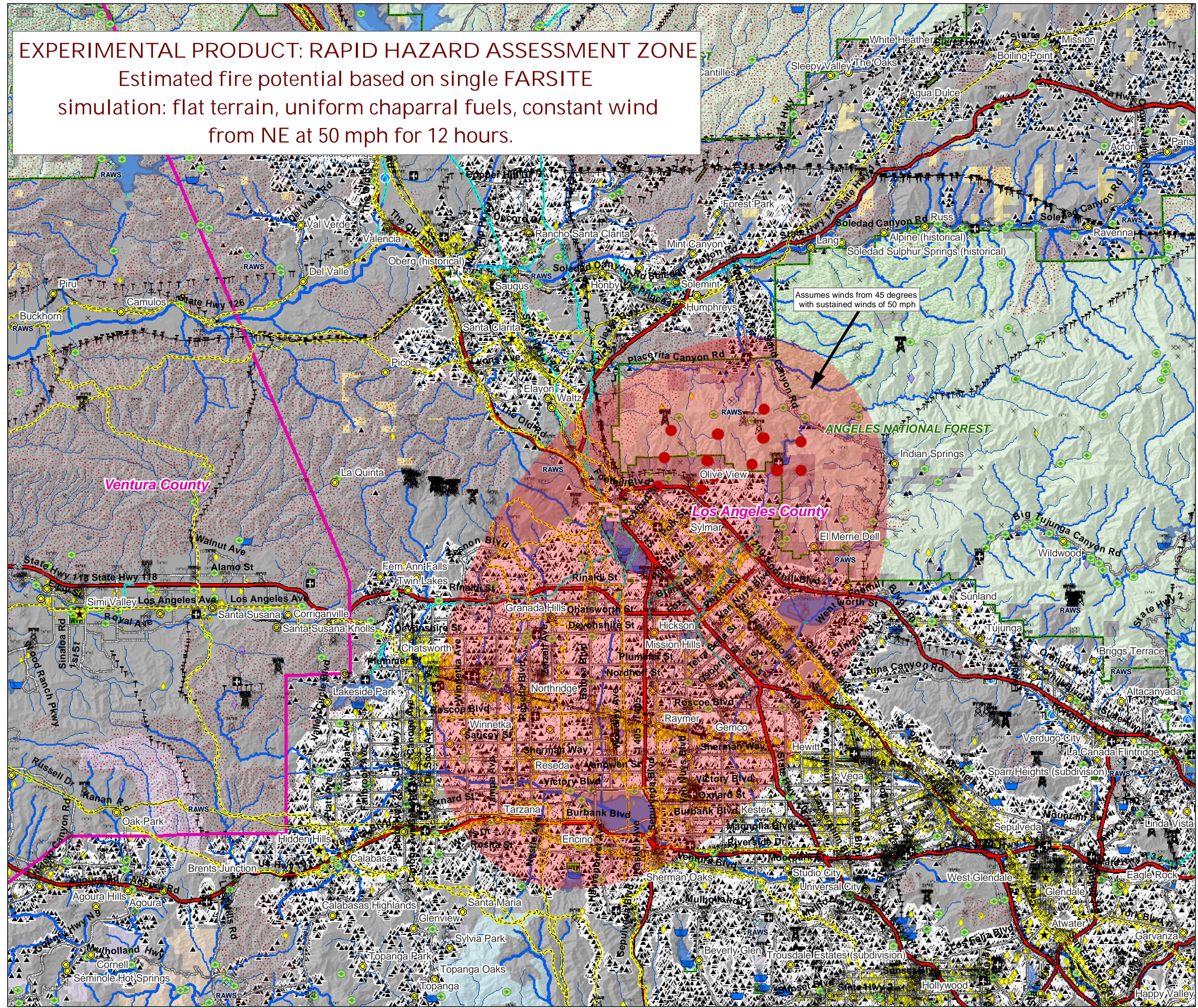
15 November 2008 RIVaT\_081115\_jr\_1  
 ICS-209 Incident Number: Unavailable at time of report  
 This map not complete without companion report.

## Limited Hazard Assessment

Based on Fire Perimeter as of 15 November 2008

*No probability of fire spread intended or implied.  
 This analysis is NOT a full risk analysis and does not replace RAVAR.  
 Beta version - Analysis method subject to change and revision*

- Sayre Fire RHAZ-Wind Adjusted
- ! MODIS Points as of 15 November AM
- ignition\_point
- Past Fires 1994-2007
- Assets**
- # Building Clusters\*
- Z RAWs Stations
- W Water: Dams > 100af
- W Water Supply: Intakes
- W Water Treatment Plants
- W Water Pipeline - Aqueduct - Canal
- Powerlines
- D Industrial Plant
- \* Power Pylon
- + Power or Pumping Substation
- X Communication Towers
- Oil & Gas Transmission Lines
- A Airports
- Airport Runways
- C HAZMAT: Mines
- W HAZMAT: Superfund Sites
- W HAZMAT: Hazardous Waste
- \* Other Landmarks
- Interstates
- Major Roads
- Railways
- Jurisdiction**
- Private
- State
- BLM
- Other Federal
- NPS
- USFS
- Inventoried Roadless
- Designated Wilderness
- County Boundary
- National Forest Boundaries



| Zone               | Acres by Zone | Cumulative Acres | Count by Zone | Cumulative Count |
|--------------------|---------------|------------------|---------------|------------------|
| In Assessment Zone | 113,911       | 113,911          | 200,969       | 200,969          |

\*Building Clusters represent the center of parcels where county assessor records indicate taxable improvements are present. One or more structures and other improvements may exist proximate to these point locations.

NOTE: Recreation residences and special use structures data are not available from USFS and are not identified or analyzed in this report.

CAUTION: Defer to air photos or local knowledge for exact structure and other feature locations.