

# 1. Get Started

- a. New Mission
- b. Open Old Mission

# 2. GPS

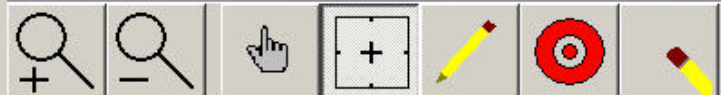
- a. Start GPS
- b. Skip This Step

# 3. Make Map

- a. Done

# 4. Post-Mission

- a. Send Map
- b. Print Maps
- c. Done



Scale 1:62K  
 N 34 15.318  
 W 118 36.822  
 -32767.0m

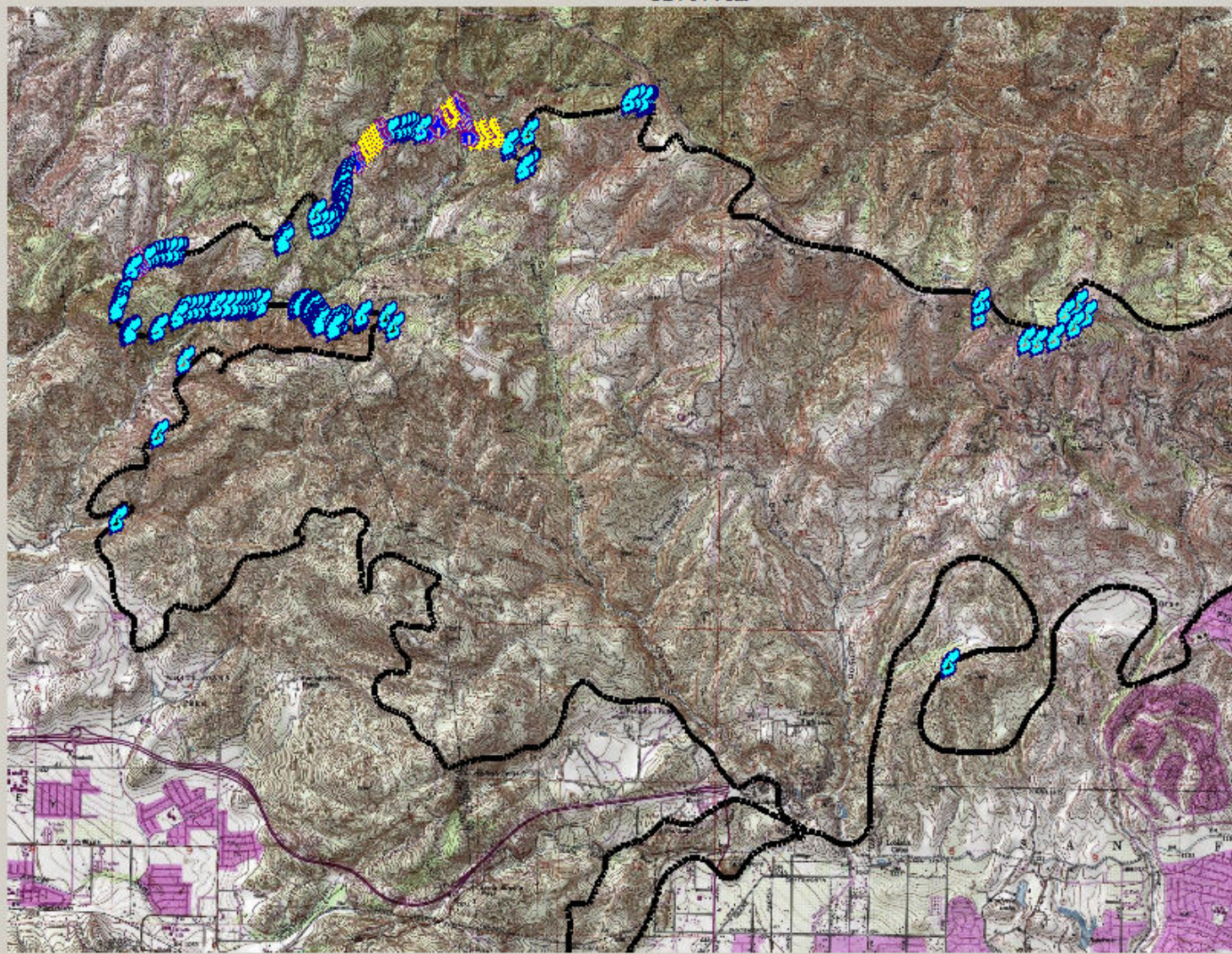
GPS

FF

Layers

RT

Track-Up



Drop Marker Here

Marker Type

- Smoldering
- Creep
- Moving
- Running
- Wavpoint

Standard Perimeters

Line Type

- Contained
- Uncontained
- Hand Line
- Dozer Line
- Contingency

[Settings](#)

RTIS SERVER CONNECTION CAMERA

# 1. Get Started

- a. New Mission
- b. Open Old Mission

# 2. GPS

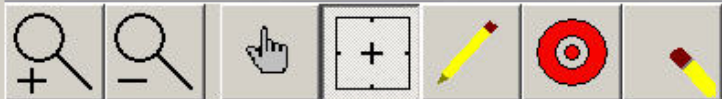
- a. Start GPS
- b. Skip This Step

# 3. Make Map

- a. Done

# 4. Post-Mission

- a. Send Map
- b. Print Maps
- c. Done



Scale 1:62K  
 N 34 20.130  
 W 118 38.581  
 -32767.0m

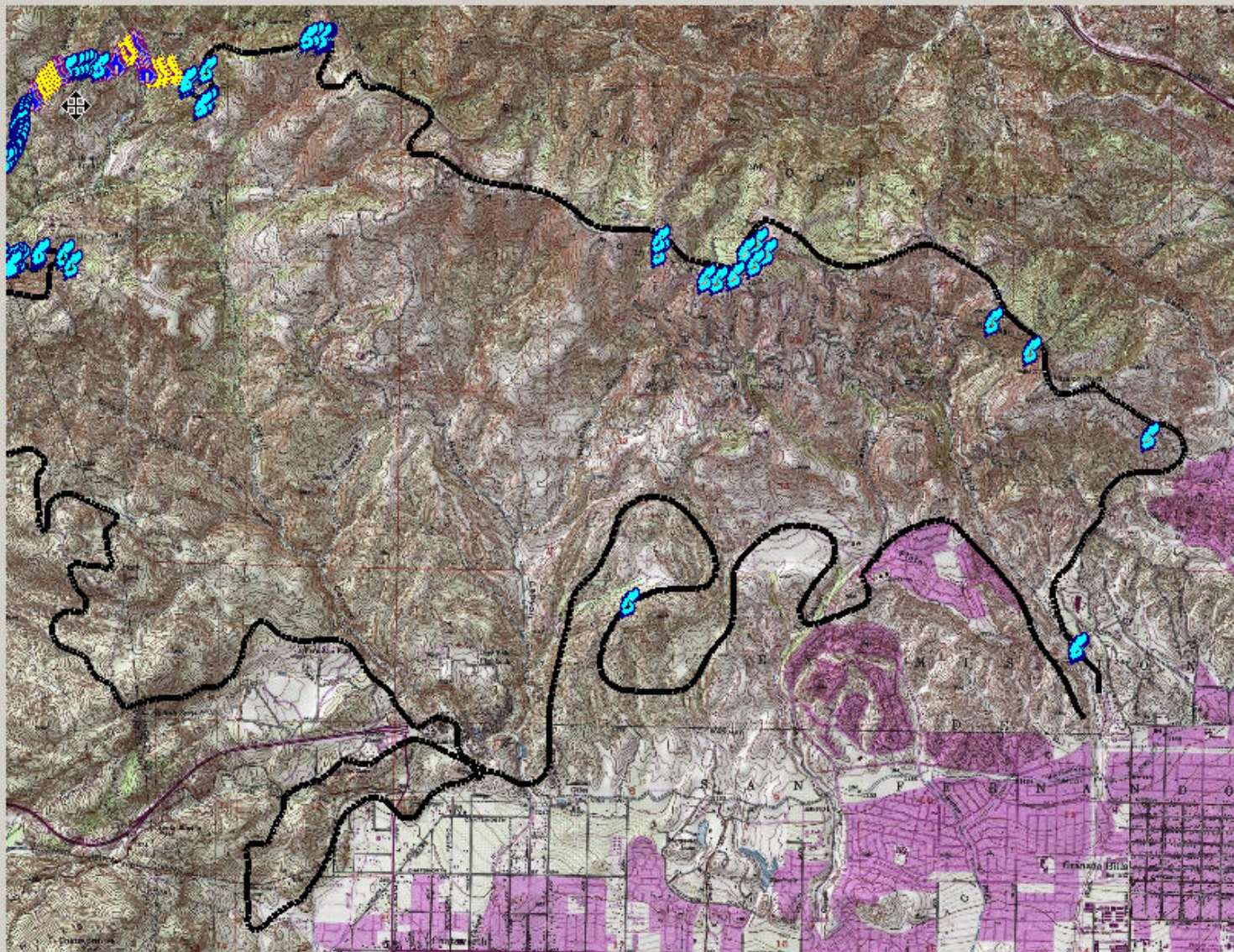
GPS

FF

Layers

RT

Track-Up



Drop Marker Here

### Marker Type

- Smoldering
- Creep
- Moving
- Running
- Wavpoint

### Standard Perimeters

### Line Type

- Contained
- Uncontained
- Hand Line
- Dozer Line
- Contingency

Settings

RTIS SERVER

CONNECTION

CAMERA