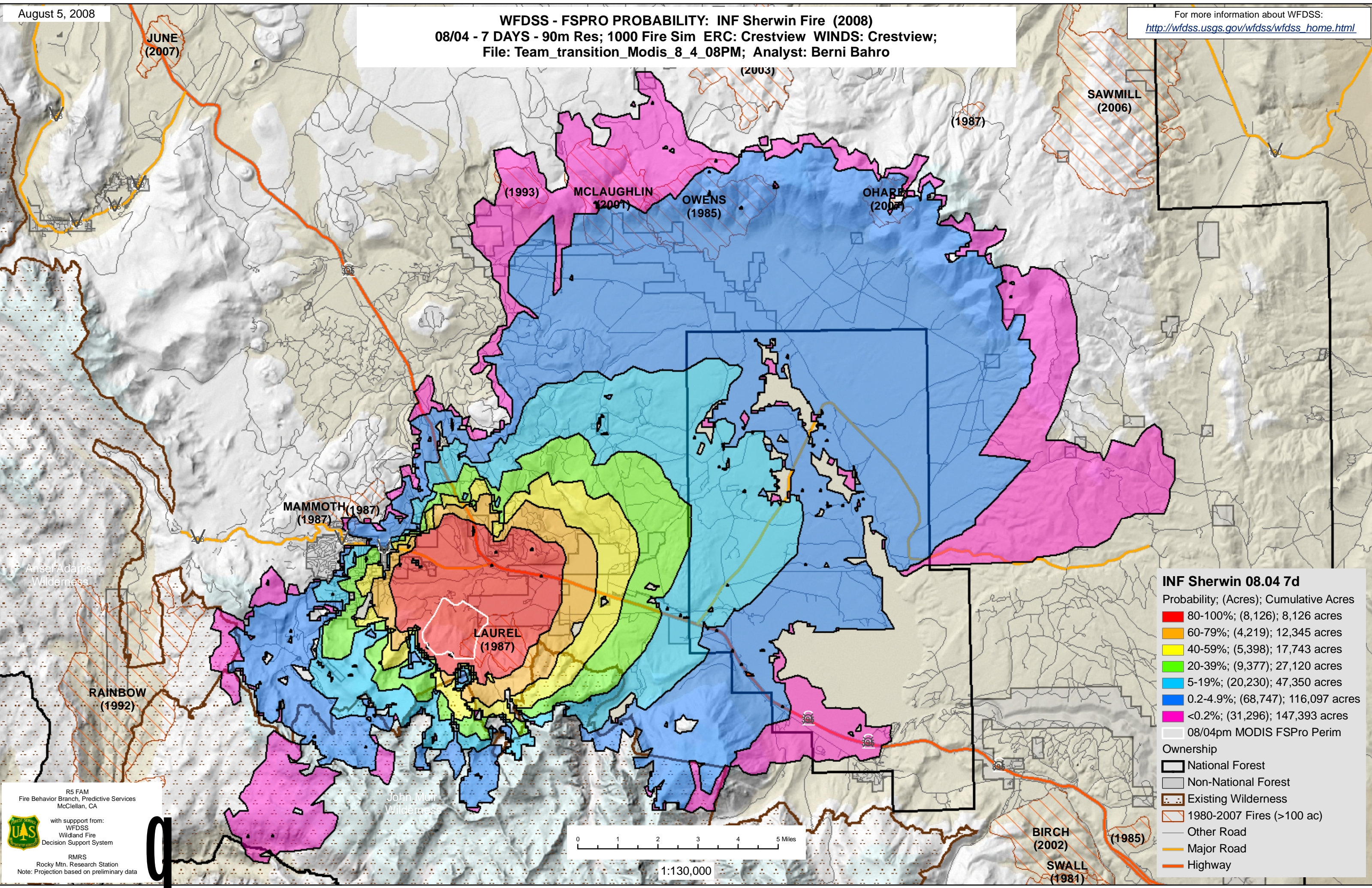


WFDSS - FSPRO PROBABILITY: INF Sherwin Fire (2008)  
08/04 - 7 DAYS - 90m Res; 1000 Fire Sim ERC: Crestview WINDS: Crestview;  
File: Team\_transition\_Modis\_8\_4\_08PM; Analyst: Berni Bahro

For more information about WFDSS:  
[http://wfdss.usgs.gov/wfdss/wfdss\\_home.html](http://wfdss.usgs.gov/wfdss/wfdss_home.html)



**INF Sherwin 08.04 7d**

Probability; (Acres); Cumulative Acres

- 80-100%; (8,126); 8,126 acres
- 60-79%; (4,219); 12,345 acres
- 40-59%; (5,398); 17,743 acres
- 20-39%; (9,377); 27,120 acres
- 5-19%; (20,230); 47,350 acres
- 0.2-4.9%; (68,747); 116,097 acres
- <0.2%; (31,296); 147,393 acres
- 08/04pm MODIS FSPRO Perim

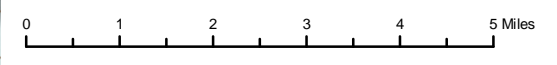
**Ownership**

- National Forest
- Non-National Forest
- Existing Wilderness
- 1980-2007 Fires (>100 ac)
- Other Road
- Major Road
- Highway

R5 FAM  
Fire Behavior Branch, Predictive Services  
McClellan, CA

with support from:  
WFDSS  
Wildland Fire  
Decision Support System

RMRS  
Rocky Mtn. Research Station  
Note: Projection based on preliminary data



1:130,000