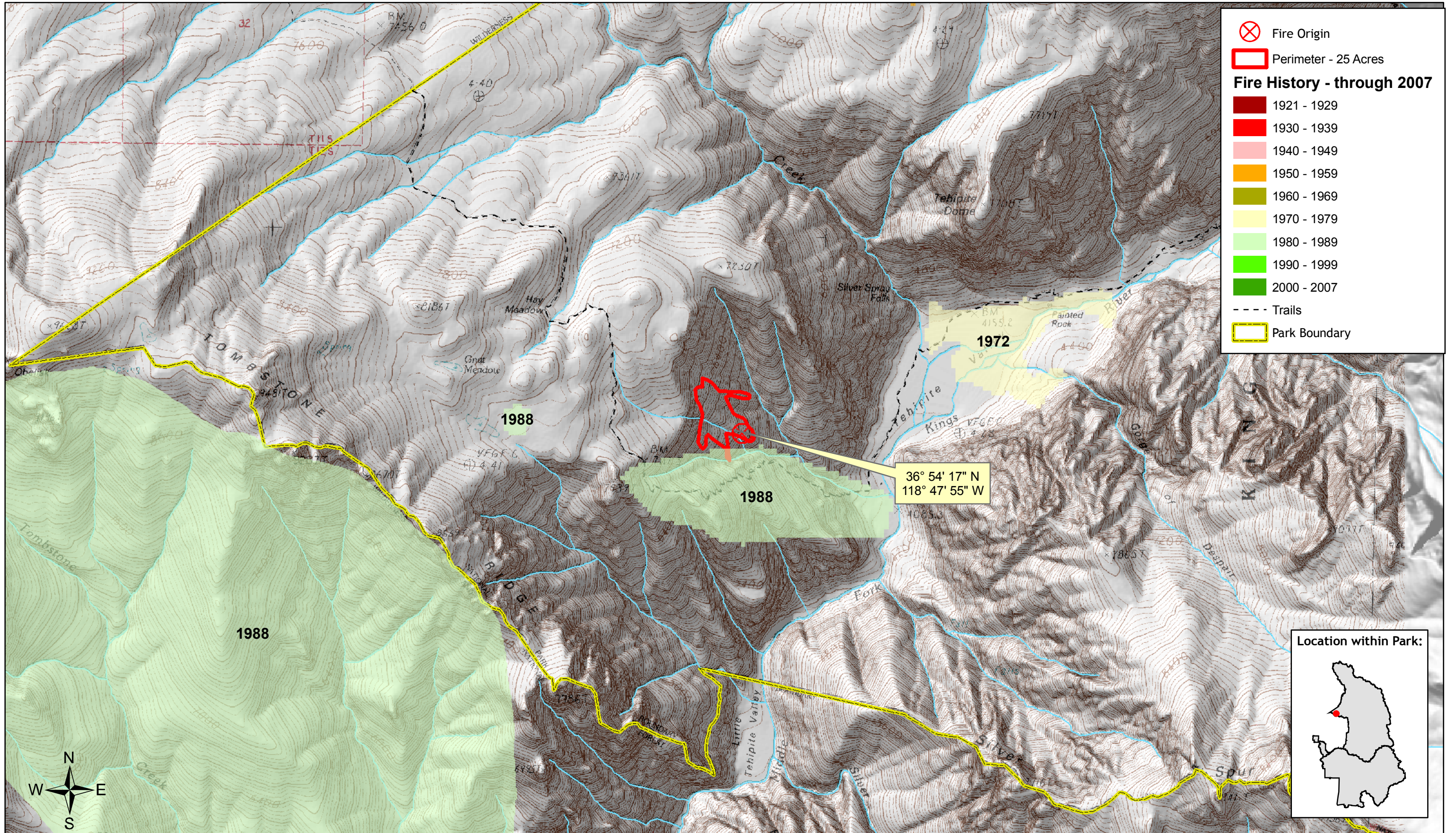


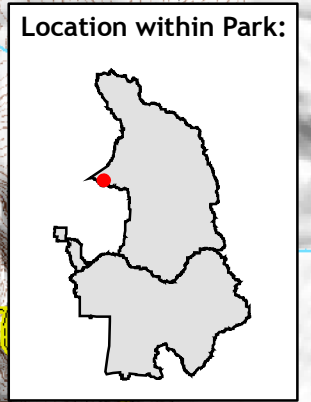
Tehipite Fire

Sequoia & Kings Canyon National Parks



⊗ Fire Origin
 Perimeter - 25 Acres
Fire History - through 2007
 1921 - 1929
 1930 - 1939
 1940 - 1949
 1950 - 1959
 1960 - 1969
 1970 - 1979
 1980 - 1989
 1990 - 1999
 2000 - 2007
 Trails
 Park Boundary

36° 54' 17" N
118° 47' 55" W



1:24,000

