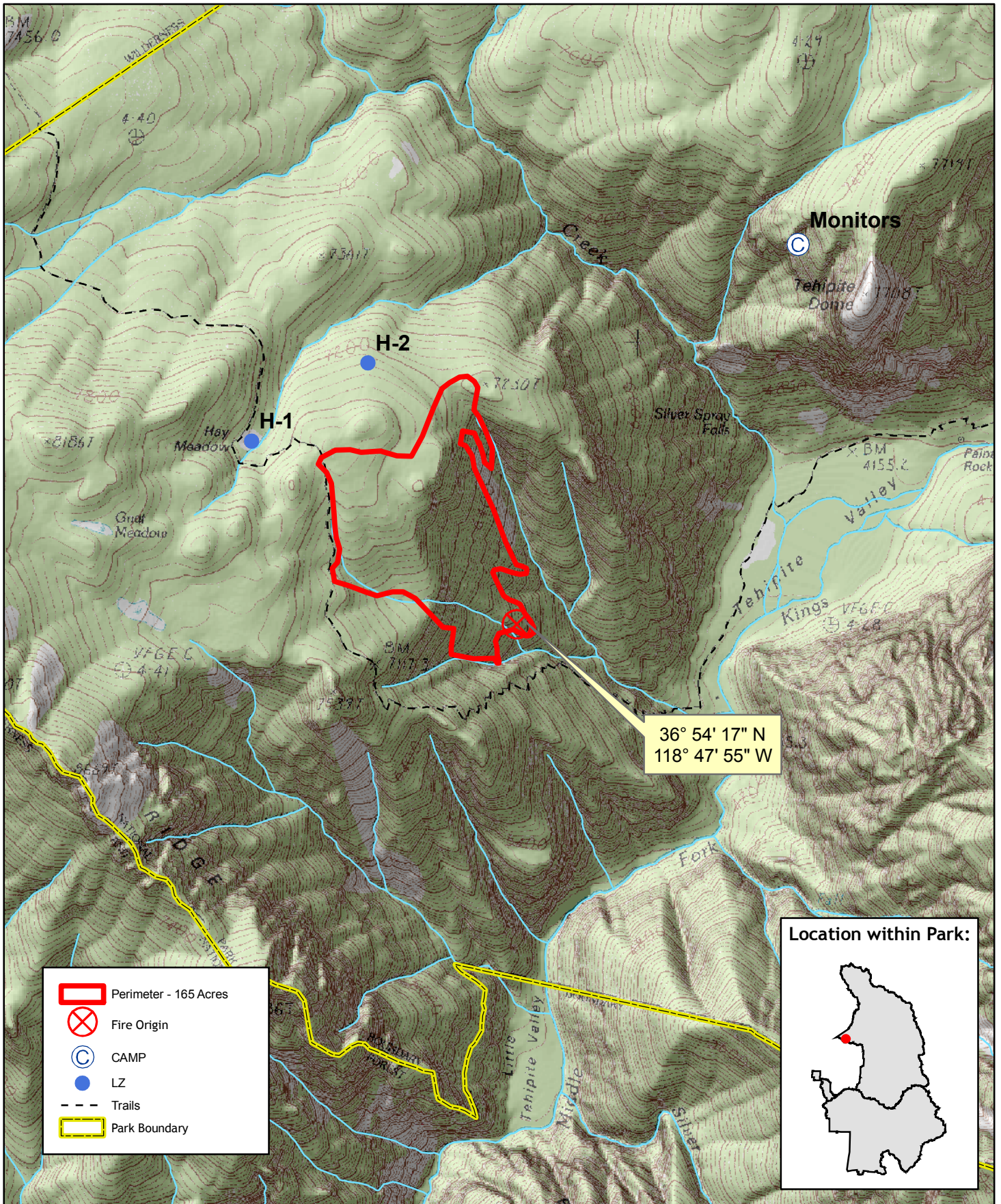


# Tehipite Fire

Sequoia & Kings Canyon National Parks

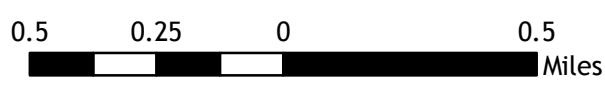


36° 54' 17" N  
118° 47' 55" W

- Perimeter - 165 Acres
- Fire Origin
- CAMP
- LZ
- Trails
- Park Boundary



1:24,000



Map by NPS(kf), 7/30/2008  
Perimeter on 30 JUL @ 1500