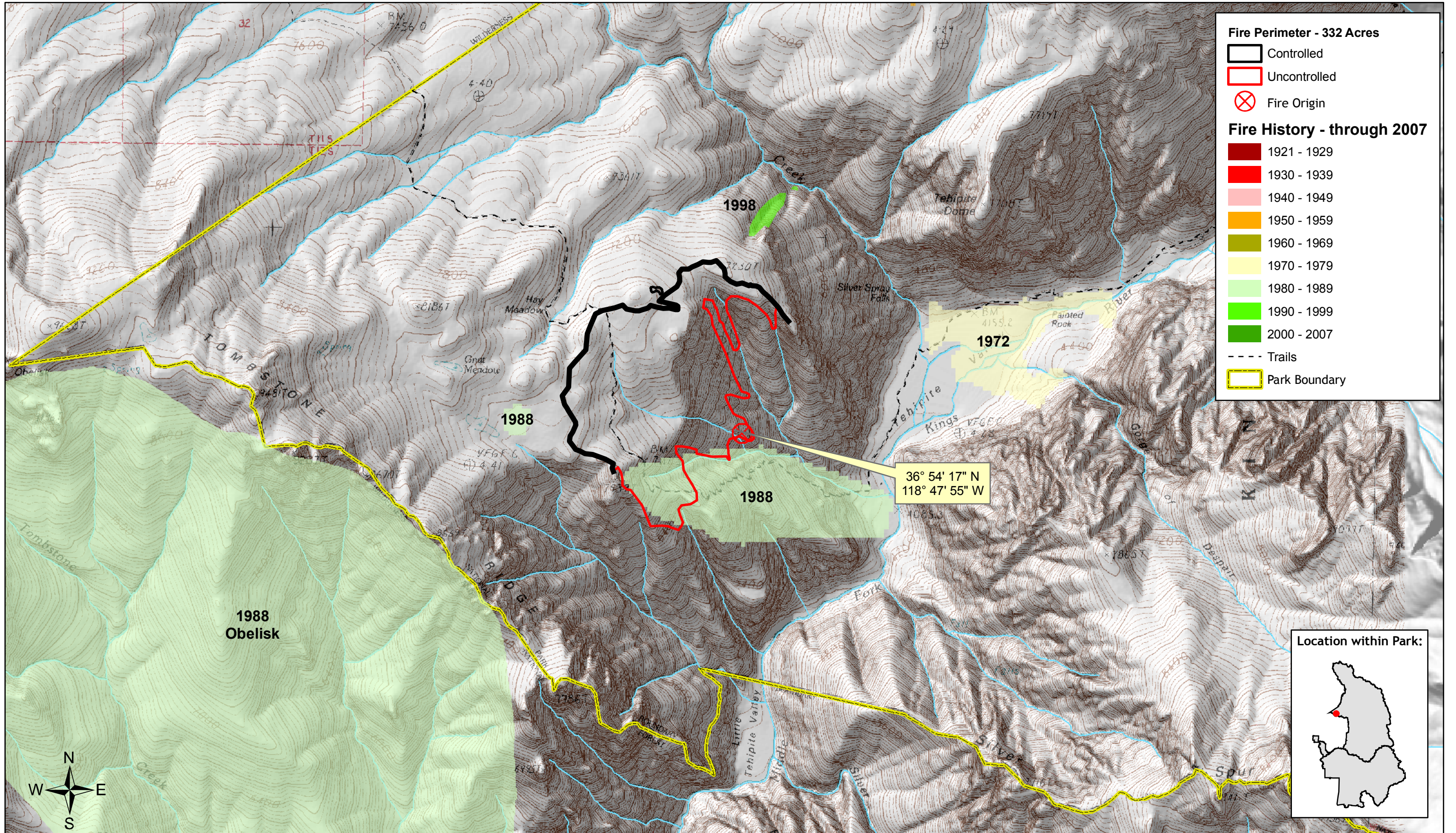


Tehipite Fire

Sequoia & Kings Canyon National Parks



Fire Perimeter - 332 Acres

- Controlled
- Uncontrolled
- ⊗ Fire Origin

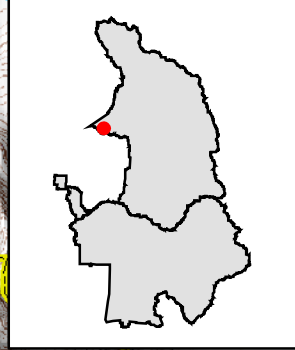
Fire History - through 2007

- 1921 - 1929
- 1930 - 1939
- 1940 - 1949
- 1950 - 1959
- 1960 - 1969
- 1970 - 1979
- 1980 - 1989
- 1990 - 1999
- 2000 - 2007

- Trails
- Park Boundary

36° 54' 17" N
118° 47' 55" W

Location within Park:



1:24,000



Map by NPS(kf), 8/7/2008
Perimeter as of 7 AUG @ 1430