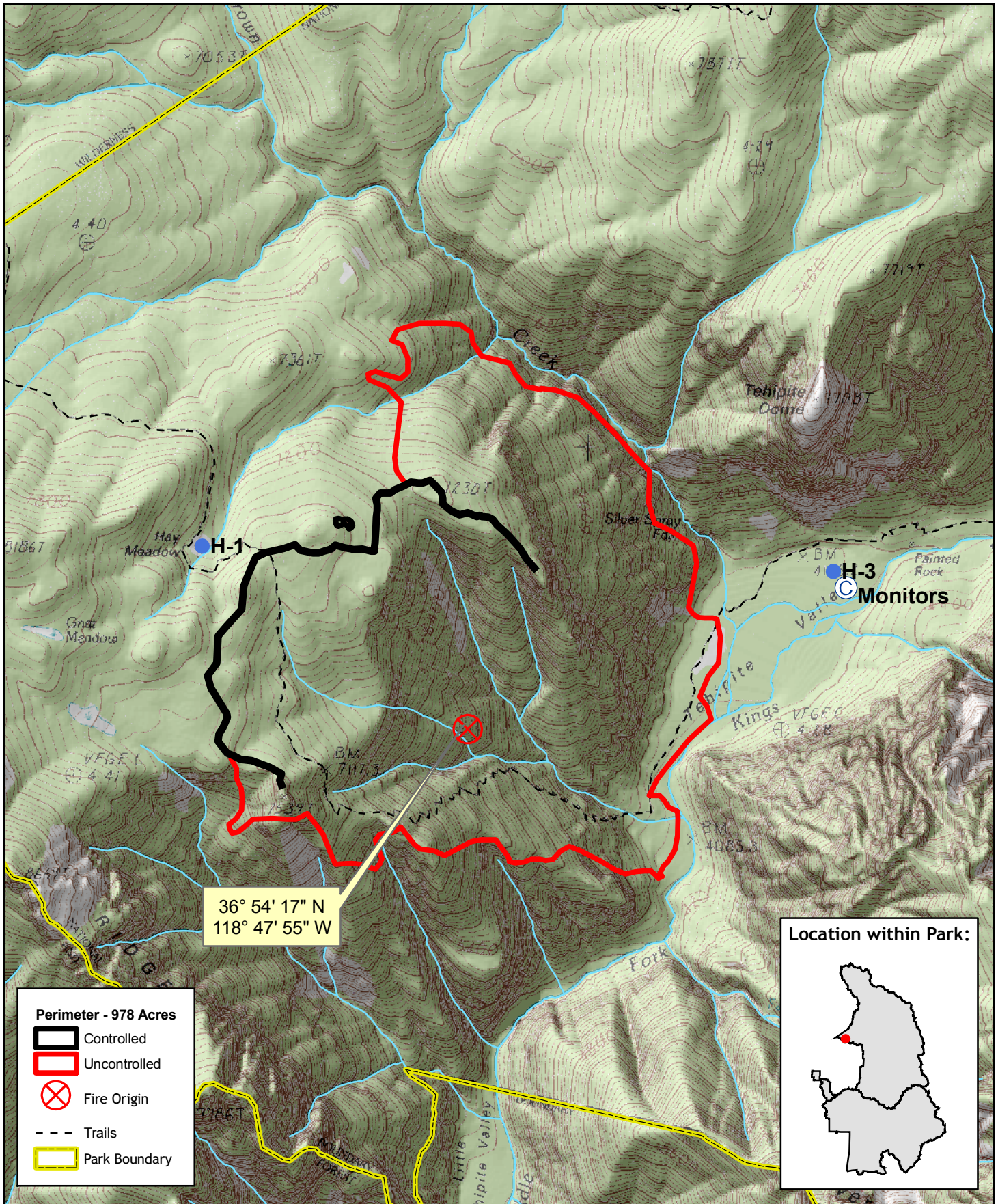


# Tehipite Fire

## Sequoia & Kings Canyon National Parks



36° 54' 17" N  
118° 47' 55" W

**Perimeter - 978 Acres**

- Controlled
- Uncontrolled
- X Fire Origin
- Trails
- Park Boundary

**Location within Park:**

1:24,000



Map by NPS(kf), 8/18/2008  
Perimeter on 18 AUG @ 1330