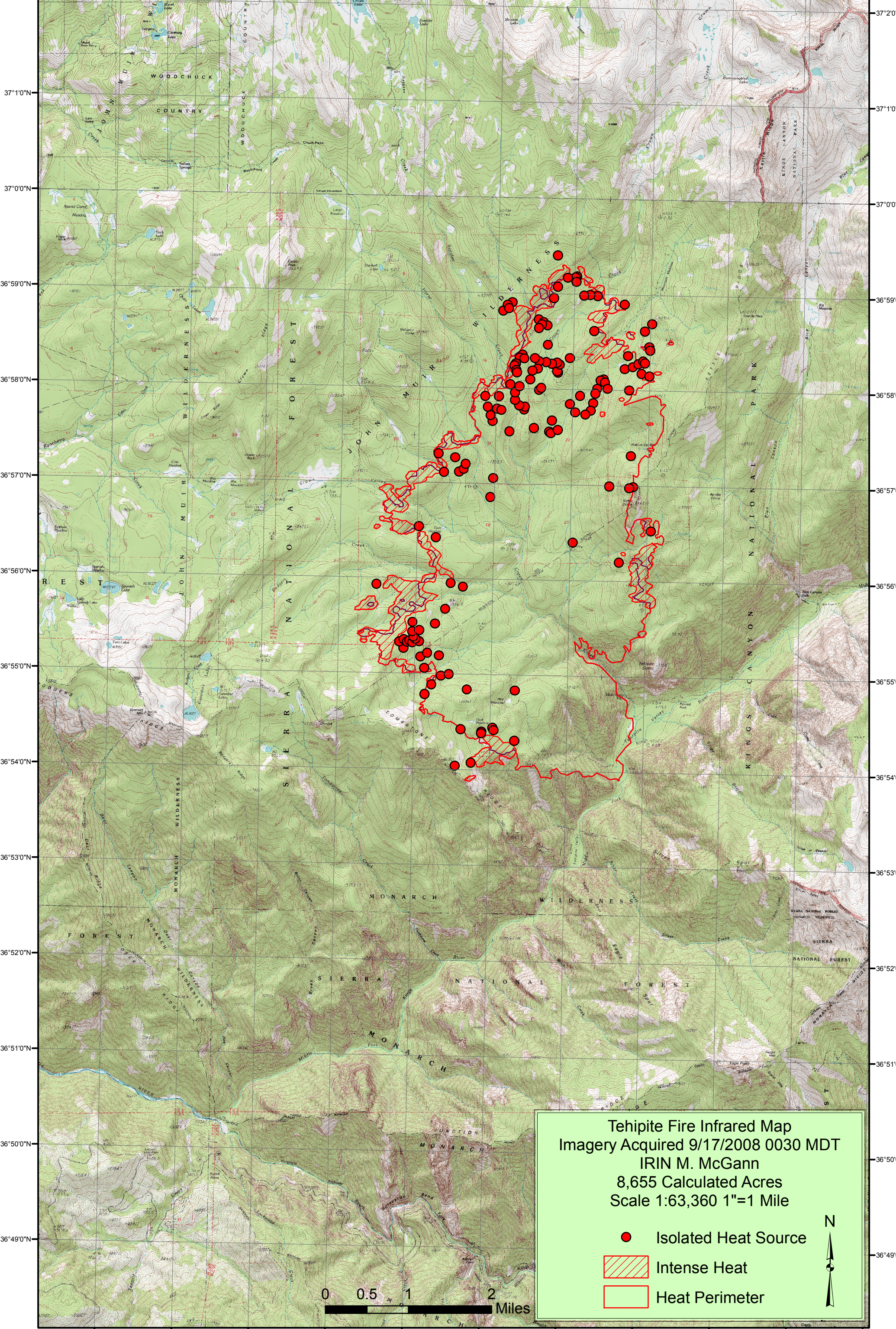


118°55'0"W 118°54'0"W 118°53'0"W 118°52'0"W 118°51'0"W 118°50'0"W 118°49'0"W 118°48'0"W 118°47'0"W 118°46'0"W 118°45'0"W



Tehipite Fire Infrared Map
Imagery Acquired 9/17/2008 0030 MDT
IRIN M. McGann
8,655 Calculated Acres
Scale 1:63,360 1"=1 Mile

- Isolated Heat Source
- ▨ Intense Heat
- ▭ Heat Perimeter



0 0.5 1 2 Miles

118°54'0"W 118°53'0"W 118°52'0"W 118°51'0"W 118°50'0"W 118°49'0"W 118°48'0"W 118°47'0"W 118°46'0"W 118°45'0"W 118°44'0"W