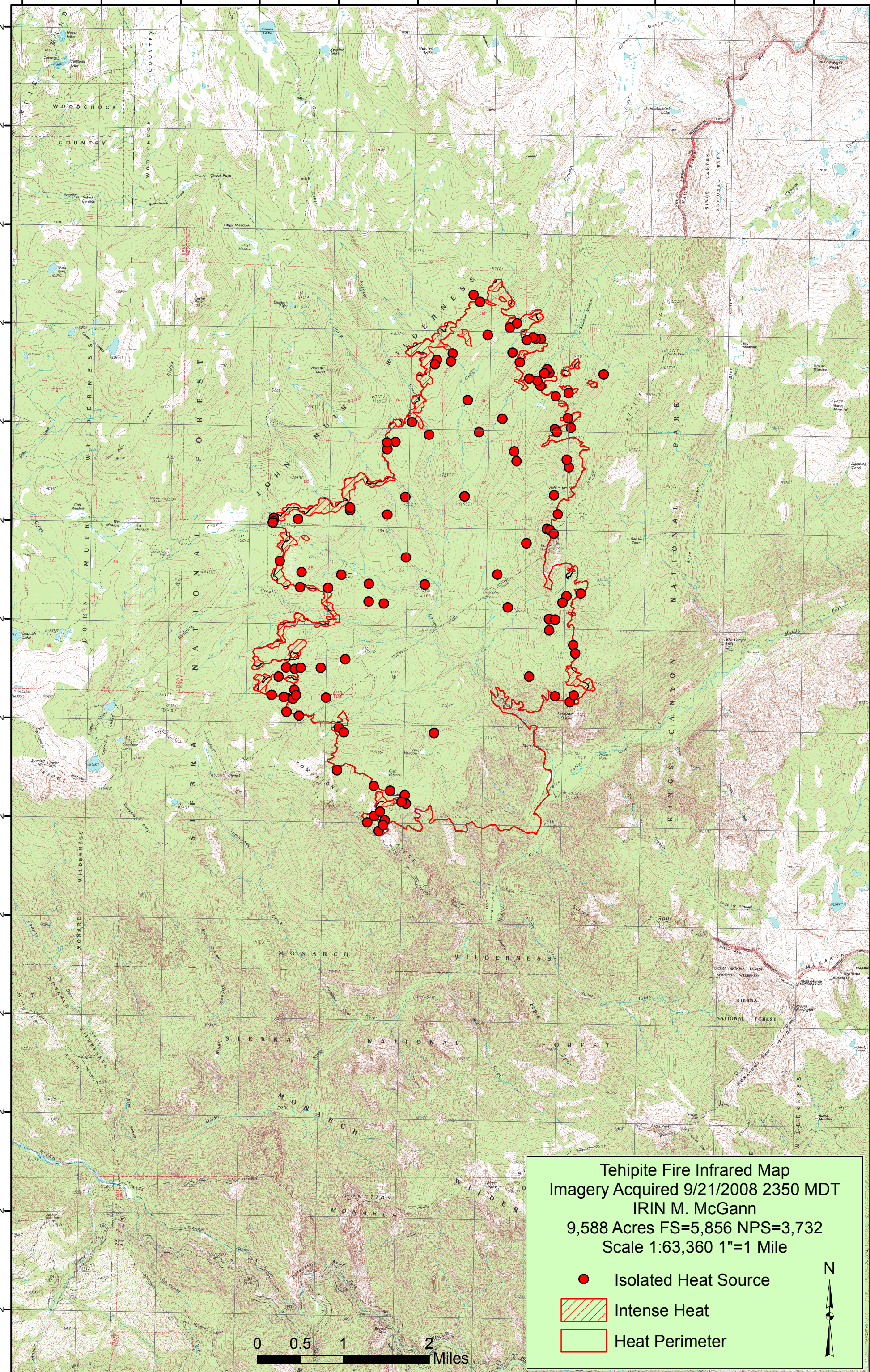


118°54'0"W 118°53'0"W 118°52'0"W 118°51'0"W 118°50'0"W 118°49'0"W 118°48'0"W 118°47'0"W 118°46'0"W 118°45'0"W 118°44'0"W



Tehipite Fire Infrared Map
 Imagery Acquired 9/21/2008 2350 MDT
 IRIN M. McGann
 9,588 Acres FS=5,856 NPS=3,732
 Scale 1:63,360 1"=1 Mile

- Isolated Heat Source
- Intense Heat
- Heat Perimeter



0 0.5 1 2 Miles

118°53'0"W 118°52'0"W 118°51'0"W 118°50'0"W 118°49'0"W 118°48'0"W 118°47'0"W 118°46'0"W 118°45'0"W 118°44'0"W 118°43'0"W