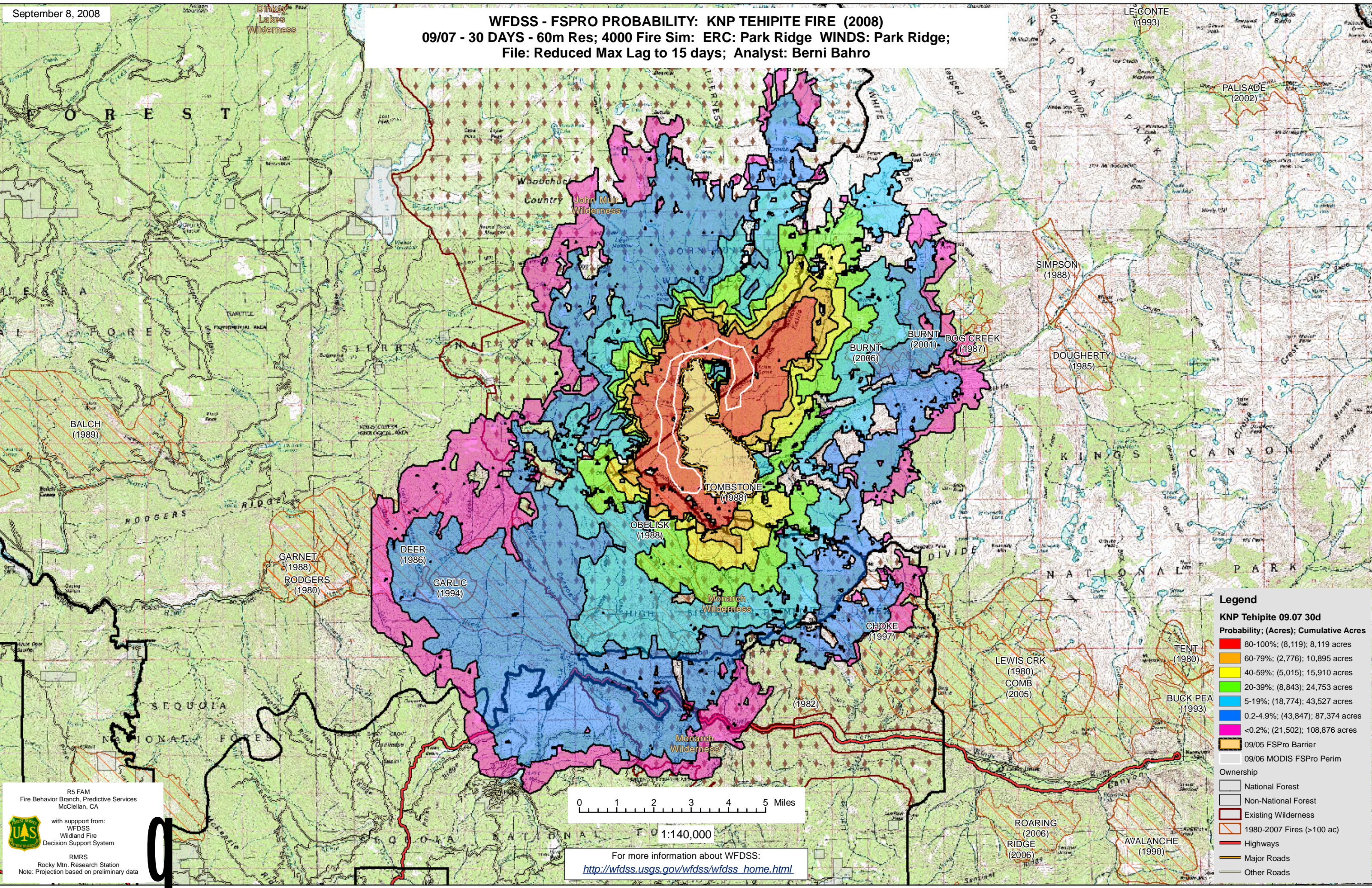


### WFDSS - FSPRO PROBABILITY: KNP TEHIPITE FIRE (2008) 09/07 - 30 DAYS - 60m Res; 4000 Fire Sim; ERC: Park Ridge WINDS: Park Ridge; File: Reduced Max Lag to 15 days; Analyst: Berni Bahro



**Legend**

**KNP Tehipite 09.07 30d**  
Probability; (Acres); Cumulative Acres

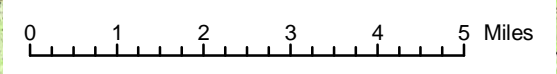
- 80-100%; (8,119); 8,119 acres
- 60-79%; (2,776); 10,895 acres
- 40-59%; (5,015); 15,910 acres
- 20-39%; (8,843); 24,753 acres
- 5-19%; (18,774); 43,527 acres
- 0.2-4.9%; (43,847); 87,374 acres
- <0.2%; (21,502); 108,876 acres

09/05 FSPRO Barrier

09/06 MODIS FSPRO Perim

**Ownership**

- National Forest
- Non-National Forest
- Existing Wilderness
- 1980-2007 Fires (>100 ac)
- Highways
- Major Roads
- Other Roads



1:140,000

For more information about WFDSS:  
[http://wfdss.usgs.gov/wfdss/wfdss\\_home.html](http://wfdss.usgs.gov/wfdss/wfdss_home.html)

R5 FAM  
Fire Behavior Branch, Predictive Services  
McClellan, CA

with support from:  
WFDSS  
Wildland Fire  
Decision Support System

RMRS  
Rocky Mtn. Research Station  
Note: Projection based on preliminary data