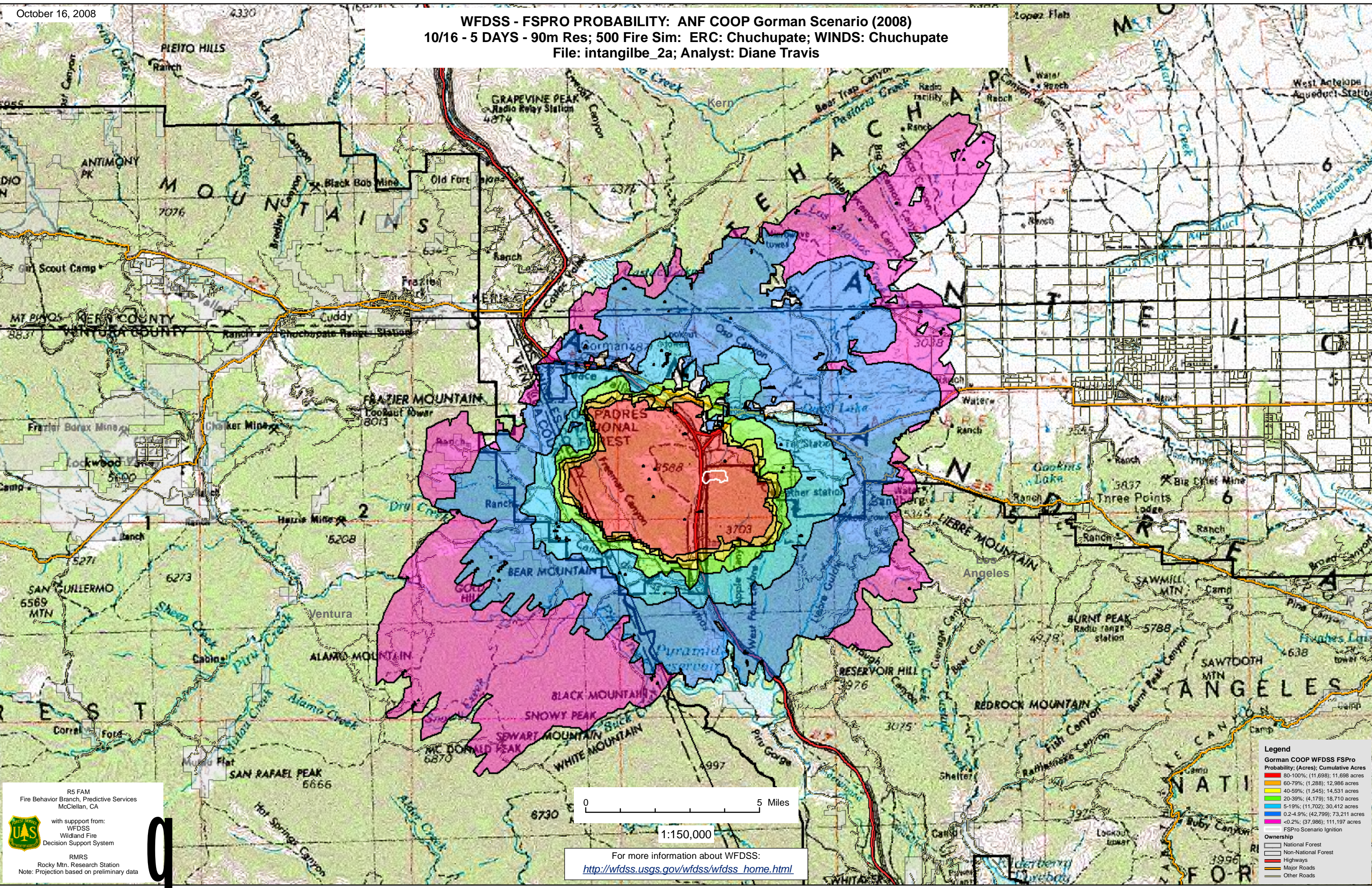
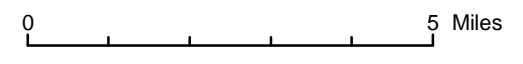


WFDSS - FSPRO PROBABILITY: ANF COOP Gorman Scenario (2008)  
10/16 - 5 DAYS - 90m Res; 500 Fire Sim: ERC: Chuchupate; WINDS: Chuchupate  
File: intangilbe\_2a; Analyst: Diane Travis



R5 FAM  
Fire Behavior Branch, Predictive Services  
McClellan, CA  
with support from:  
WFDSS  
Wildland Fire  
Decision Support System  
RMRS  
Rocky Mtn. Research Station  
Note: Projection based on preliminary data



1:150,000

For more information about WFDSS:  
[http://wfdss.usgs.gov/wfdss/wfdss\\_home.html](http://wfdss.usgs.gov/wfdss/wfdss_home.html)

**Legend**

Gorman COOP WFDSS FSPRO  
Probability; (Acres); Cumulative Acres

- 80-100%; (1,698); 11,698 acres
- 60-79%; (1,288); 12,986 acres
- 40-59%; (1,545); 14,531 acres
- 20-39%; (4,179); 18,710 acres
- 5-19%; (11,702); 30,412 acres
- 0.2-4.9%; (42,799); 73,211 acres
- <0.2%; (37,986); 111,197 acres
- FSPRO Scenario Ignition

**Ownership**

- National Forest
- Non-National Forest
- Highways
- Major Roads
- Other Roads