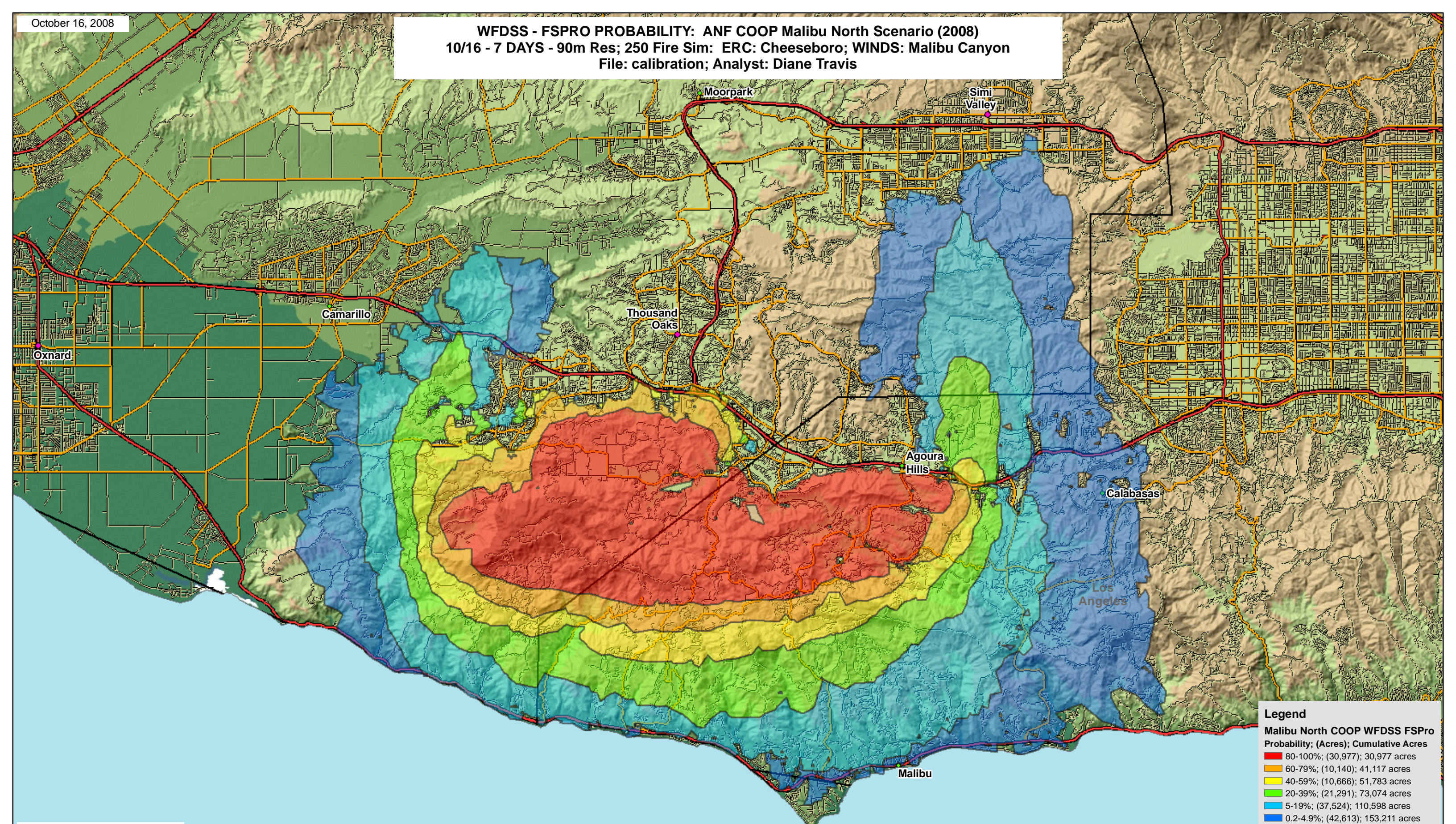


WFDSS - FSPRO PROBABILITY: ANF COOP Malibu North Scenario (2008)
10/16 - 7 DAYS - 90m Res; 250 Fire Sim: ERC: Cheeseboro; WINDS: Malibu Canyon
File: calibration; Analyst: Diane Travis



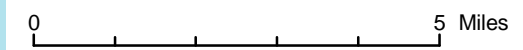
Legend

Malibu North COOP WFDSS FSPRO Probability; (Acres); Cumulative Acres

- 80-100%; (30,977); 30,977 acres
- 60-79%; (10,140); 41,117 acres
- 40-59%; (10,666); 51,783 acres
- 20-39%; (21,291); 73,074 acres
- 5-19%; (37,524); 110,598 acres
- 0.2-4.9%; (42,613); 153,211 acres
- <0.2%; (0*); 153,211 acres
- FSPRO Scenario Ignition

Ownership

- National Forest
- Non-National Forest
- Highways
- Major Roads
- Other Roads



1:150,000

For more information about WFDSS:
http://wfdss.usgs.gov/wfdss/wfdss_home.html

R5 FAM
Fire Behavior Branch, Predictive Services
McClellan, CA

with support from:
WFDSS
Wildland Fire
Decision Support System

RMRS
Rocky Mtn. Research Station
Note: Projection based on preliminary data

