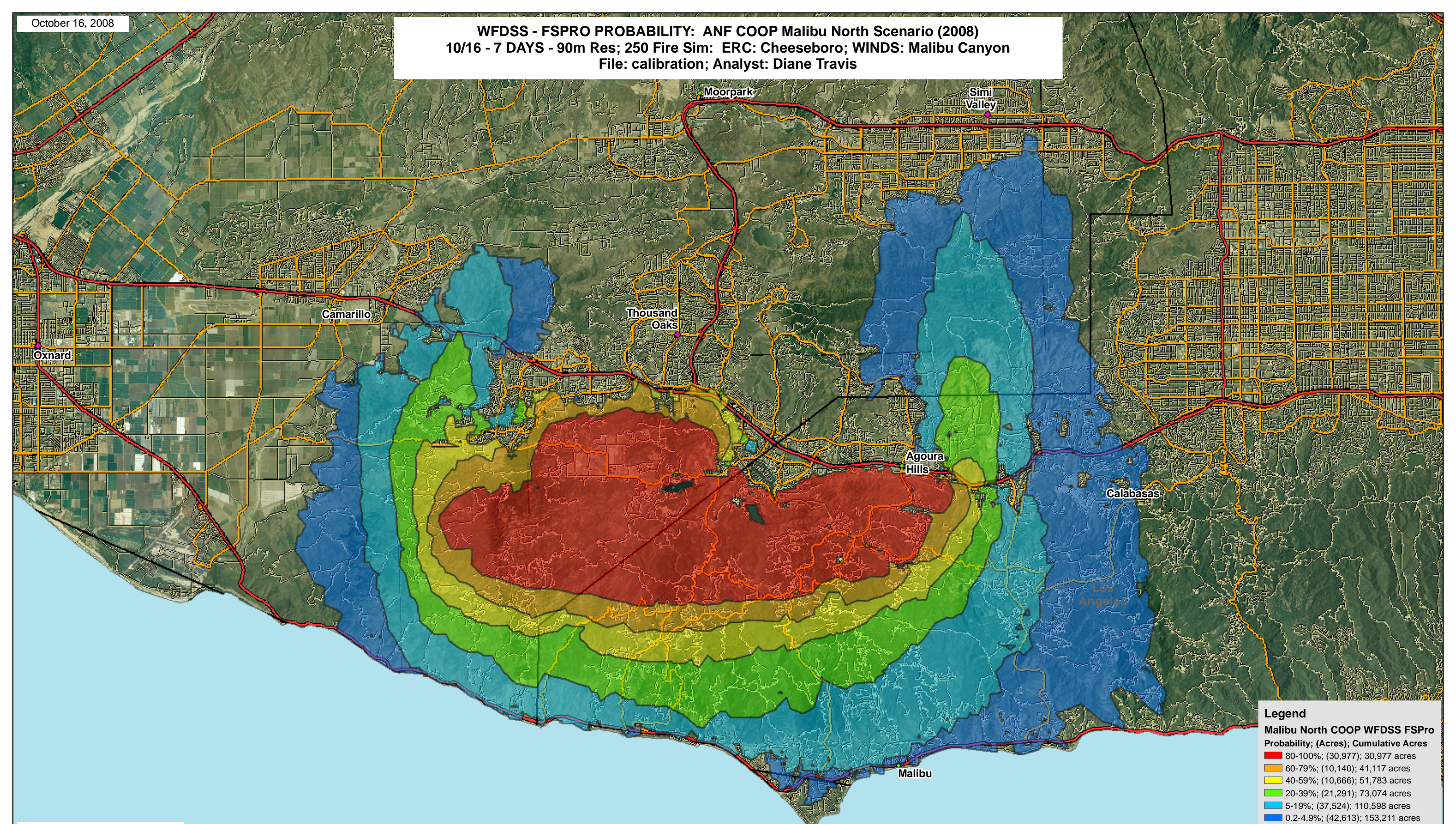


**WFDSS - FSPRO PROBABILITY: ANF COOP Malibu North Scenario (2008)**  
10/16 - 7 DAYS - 90m Res; 250 Fire Sim: ERC: Cheeseboro; WINDS: Malibu Canyon  
File: calibration; Analyst: Diane Travis



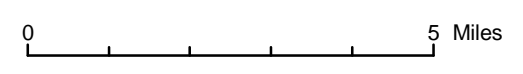
**Legend**

**Malibu North COOP WFDSS FSPRO Probability; (Acres); Cumulative Acres**

- 80-100%; (30,977); 30,977 acres
- 60-79%; (10,140); 41,117 acres
- 40-59%; (10,666); 51,783 acres
- 20-39%; (21,291); 73,074 acres
- 5-19%; (37,524); 110,598 acres
- 0.2-4.9%; (42,613); 153,211 acres
- <0.2%; (0\*); 153,211 acres

**FSPRO Scenario Ignition**

- National Forest
- Non-National Forest
- Highways
- Major Roads
- Other Roads



1:150,000

For more information about WFDSS:  
[http://wfdss.usgs.gov/wfdss/wfdss\\_home.html](http://wfdss.usgs.gov/wfdss/wfdss_home.html)

R5 FAM  
Fire Behavior Branch, Predictive Services  
McClellan, CA

with support from:  
WFDSS  
Wildland Fire  
Decision Support System

RMRS  
Rocky Mtn. Research Station  
Note: Projection based on preliminary data