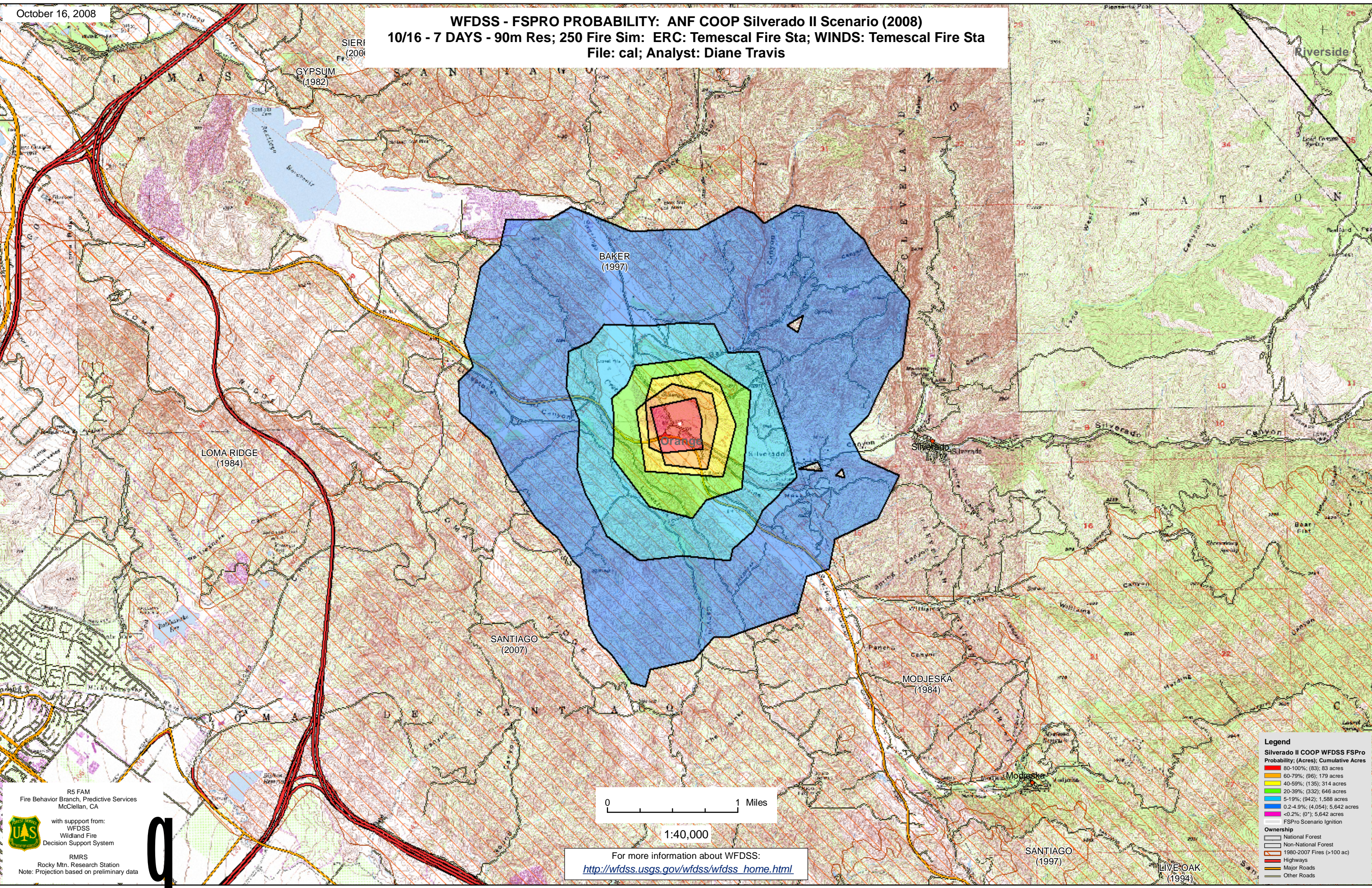


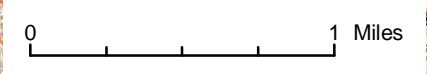
WFDSS - FSPRO PROBABILITY: ANF COOP Silverado II Scenario (2008)
10/16 - 7 DAYS - 90m Res; 250 Fire Sim: ERC: Temescal Fire Sta; WINDS: Temescal Fire Sta
File: cal; Analyst: Diane Travis



R5 FAM
Fire Behavior Branch, Predictive Services
McClellan, CA

with support from:
WFDSS
Wildland Fire
Decision Support System

RMRS
Rocky Mtn. Research Station
Note: Projection based on preliminary data



1:40,000

For more information about WFDSS:
http://wfdss.usgs.gov/wfdss/wfdss_home.html

Legend

Silverado II COOP WFDSS FSPRO Probability; (Acres); Cumulative Acres

- 80-100%; (83); 83 acres
- 60-79%; (96); 179 acres
- 40-59%; (135); 314 acres
- 20-39%; (332); 646 acres
- 5-19%; (942); 1,588 acres
- 0.2-4.9%; (4,054); 5,642 acres
- <0.2%; (0*); 5,642 acres
- FSPRO Scenario Ignition

Ownership

- National Forest
- Non-National Forest
- 1980-2007 Fires (>100 ac)
- Highways
- Major Roads
- Other Roads

