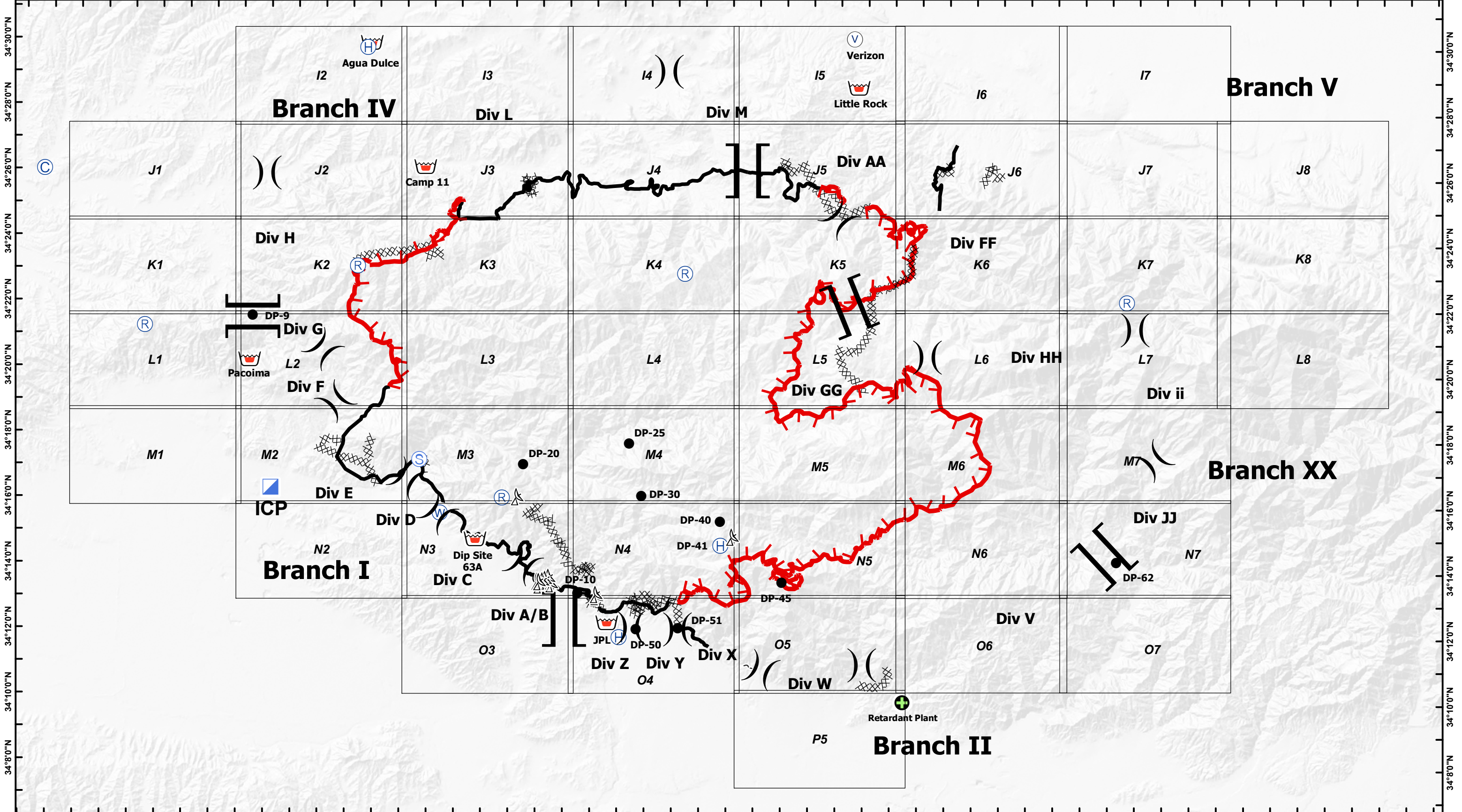


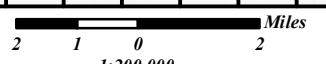
118°32'0"W 118°30'0"W 118°28'0"W 118°26'0"W 118°24'0"W 118°22'0"W 118°20'0"W 118°18'0"W 118°16'0"W 118°14'0"W 118°12'0"W 118°10'0"W 118°8'0"W 118°6'0"W 118°4'0"W 118°2'0"W 118°0'0"W 117°58'0"W 117°56'0"W 117°54'0"W 117°52'0"W 117°50'0"W 117°48'0"W 117°46'0"W 117°44'0"W 117°42'0"W 117°40'0"W



CA-ANF-3622
September 3, 2009

Station Fire Angeles National Forest

- Comm Sites
- Retardant Plant
- Drop Point
- Uncontrolled Fire Edge
- Repeater
- Staging Areas
- Helibase
- Completed Line
- Incident Base
- Water Source
- Dip Site
- Completed Dozer Line
- Division Break
- Branch Break



1:200,000

