

118°5'30"W 118°5'0"W 118°4'30"W 118°4'0"W 118°3'30"W 118°3'0"W 118°2'30"W 118°2'0"W 118°1'30"W 118°1'0"W 118°0'30"W 118°0'0"W

34°27'30"N
34°27'0"N
34°26'30"N
34°26'0"N
34°25'30"N
34°25'0"N

34°27'30"N
34°27'0"N
34°26'30"N
34°26'0"N
34°25'30"N
34°25'0"N

Branch IV

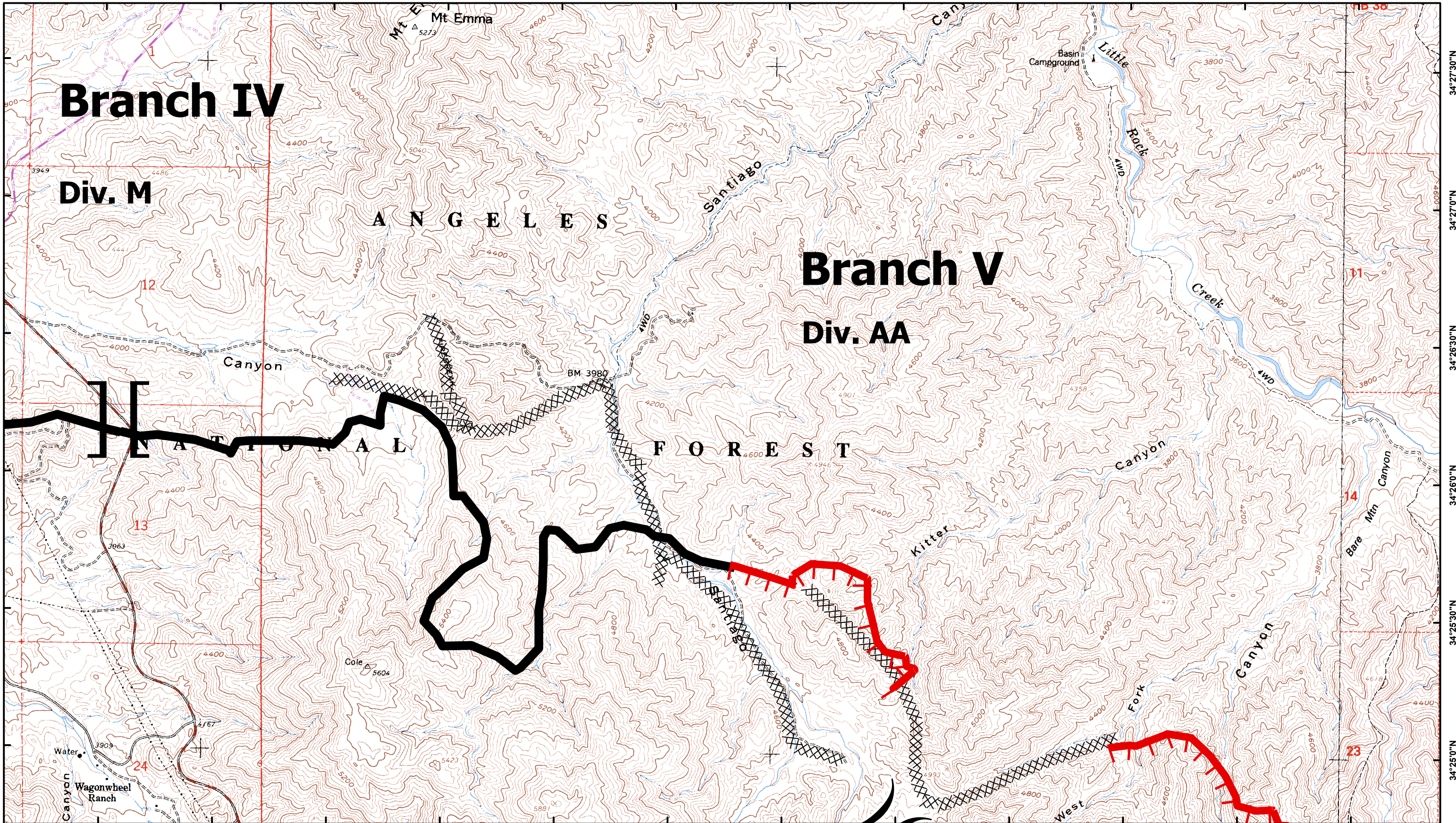
Div. M

A N G E L E S

Branch V

Div. AA

N A T I O N A L F O R E S T



CA-ANF-3622
September 3, 2009

Map Page J-5

Station Fire Angeles National Forest

Comm Sites	Retardant Plant	Drop Point	Uncontrolled Fire Edge	Division Break	Miles 0.5 0.25 0 1:24,000		
Repeater	Staging Areas	Helibase	Completed Line				
Water Source	Dip Site	Completed Dozer Line					