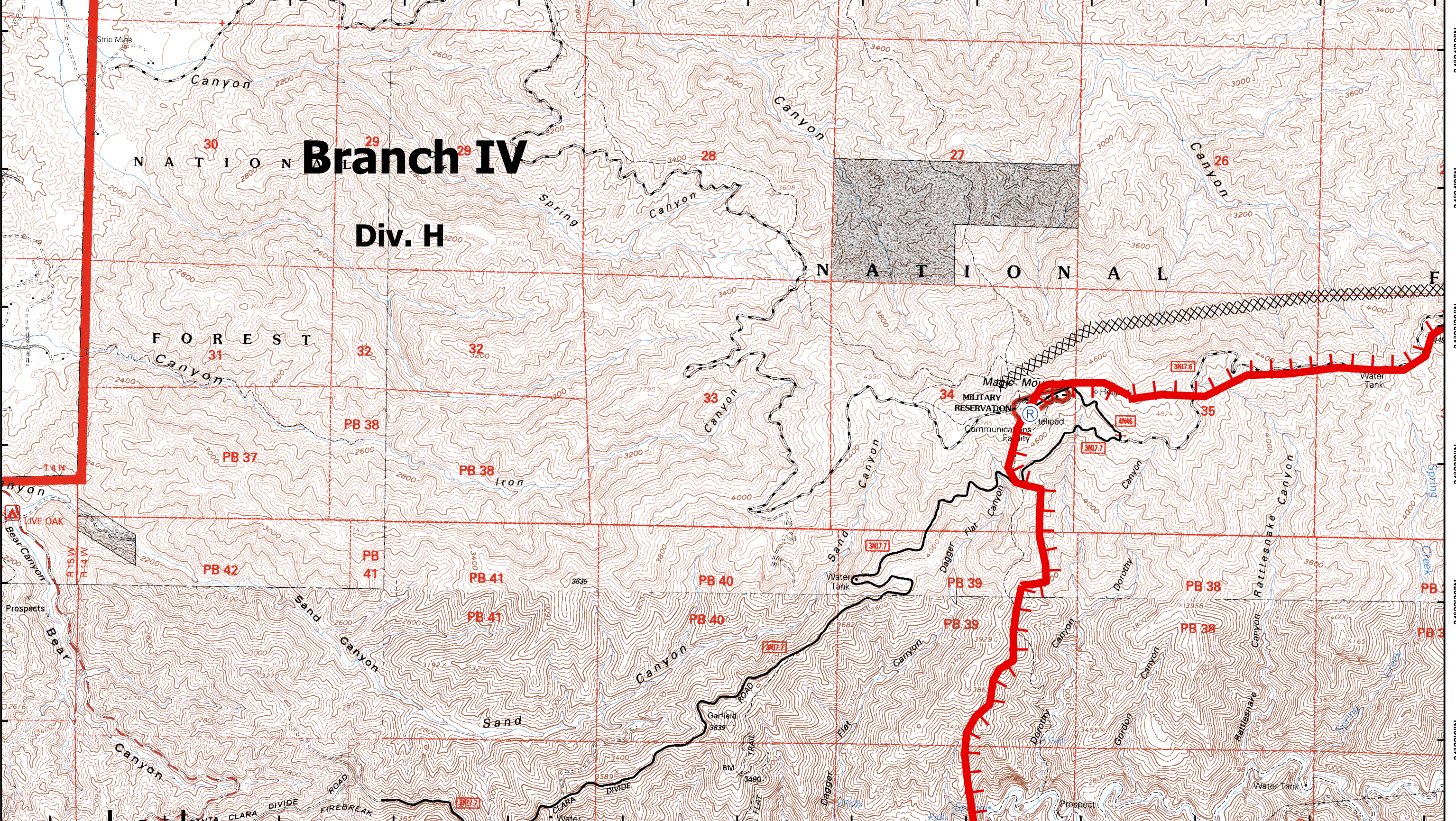


118°24'0"W 118°23'30"W 118°23'0"W 118°22'30"W 118°22'0"W 118°21'30"W 118°21'0"W 118°20'30"W 118°20'0"W 118°19'30"W 118°19'0"W 118°18'30"W 118°18'0"W

34°24'30"N  
34°24'0"N  
34°23'30"N  
34°23'0"N  
34°22'30"N  
34°22'0"N

34°24'30"N  
34°24'0"N  
34°23'30"N  
34°23'0"N  
34°22'30"N  
34°22'0"N



# Branch IV

## Div. H

CA-ANF-3622  
September 3, 2009

Map Page K-2

### Station Fire

#### Angeles National Forest

- Comm Sites
- Retardant Plant
- Drop Point
- Uncontrolled Fire Edge
- Repeater
- Staging Areas
- Helibase
- Completed Line
- Water Source
- Dip Site
- Completed Dozer Line
- Division Break
- Branch Break

