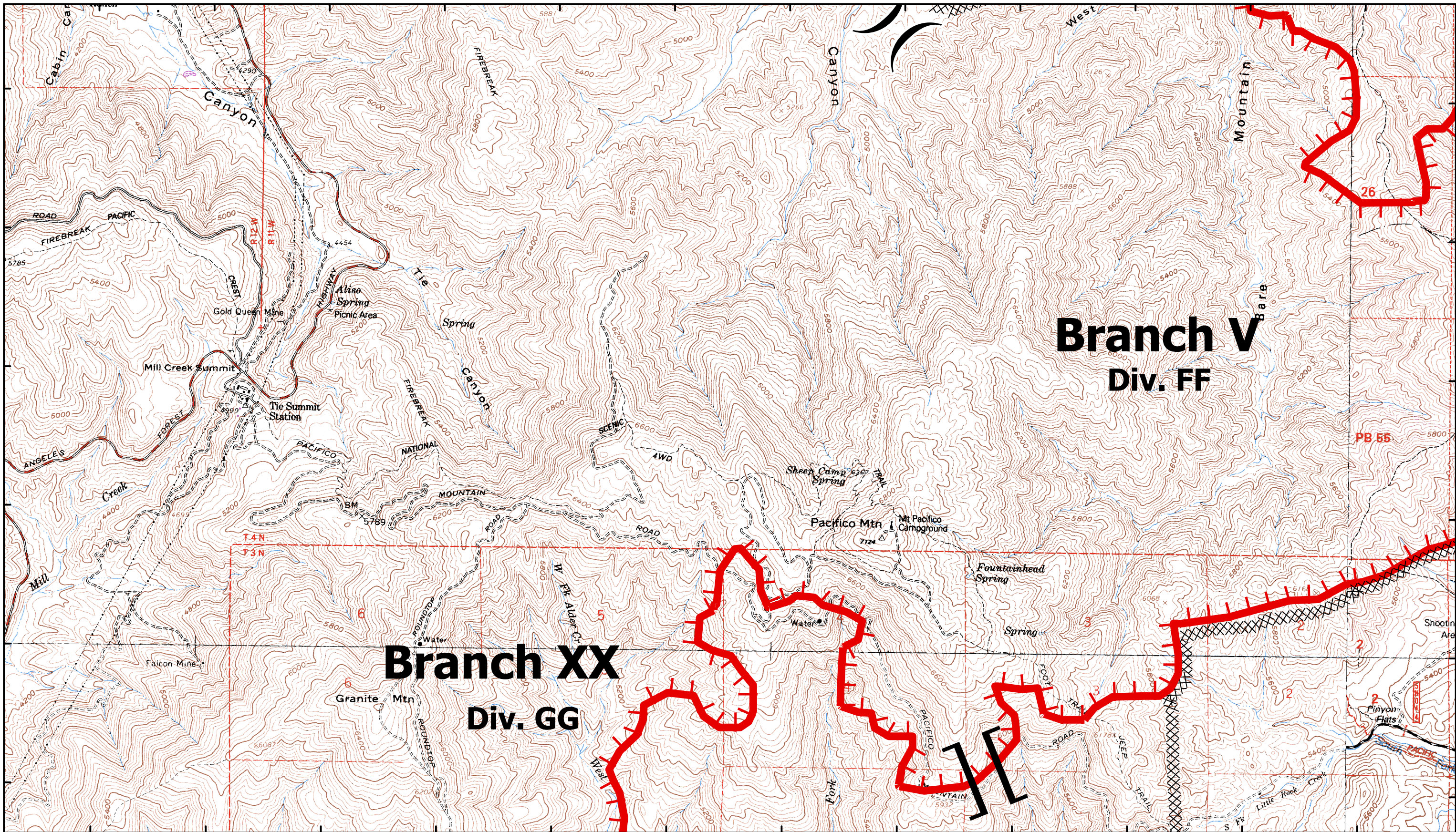


118°5'30"W 118°5'0"W 118°4'30"W 118°4'0"W 118°3'30"W 118°3'0"W 118°2'30"W 118°2'0"W 118°1'30"W 118°1'0"W 118°0'30"W 118°0'0"W

34°24'30"N
34°24'0"N
34°23'30"N
34°23'0"N
34°22'30"N
34°22'0"N

34°24'30"N
34°24'0"N
34°23'30"N
34°23'0"N
34°22'30"N
34°22'0"N



**Branch V
Div. FF**

**Branch XX
Div. GG**

CA-ANF-3622
September 3, 2009

Map Page K-5

Station Fire
Angeles National Forest

- ▲ Comm Sites
- ⊕ Retardant Plant
- Drop Point
- ⌈ Uncontrolled Fire Edge
- ⌋ Division Break
- Ⓡ Repeater
- Ⓢ Staging Areas
- Ⓜ Helibase
- Completed Line
- Ⓜ Water Source
- Ⓜ Dip Site
- ⊗ Completed Dozer Line
- ⌈ Branch Break

