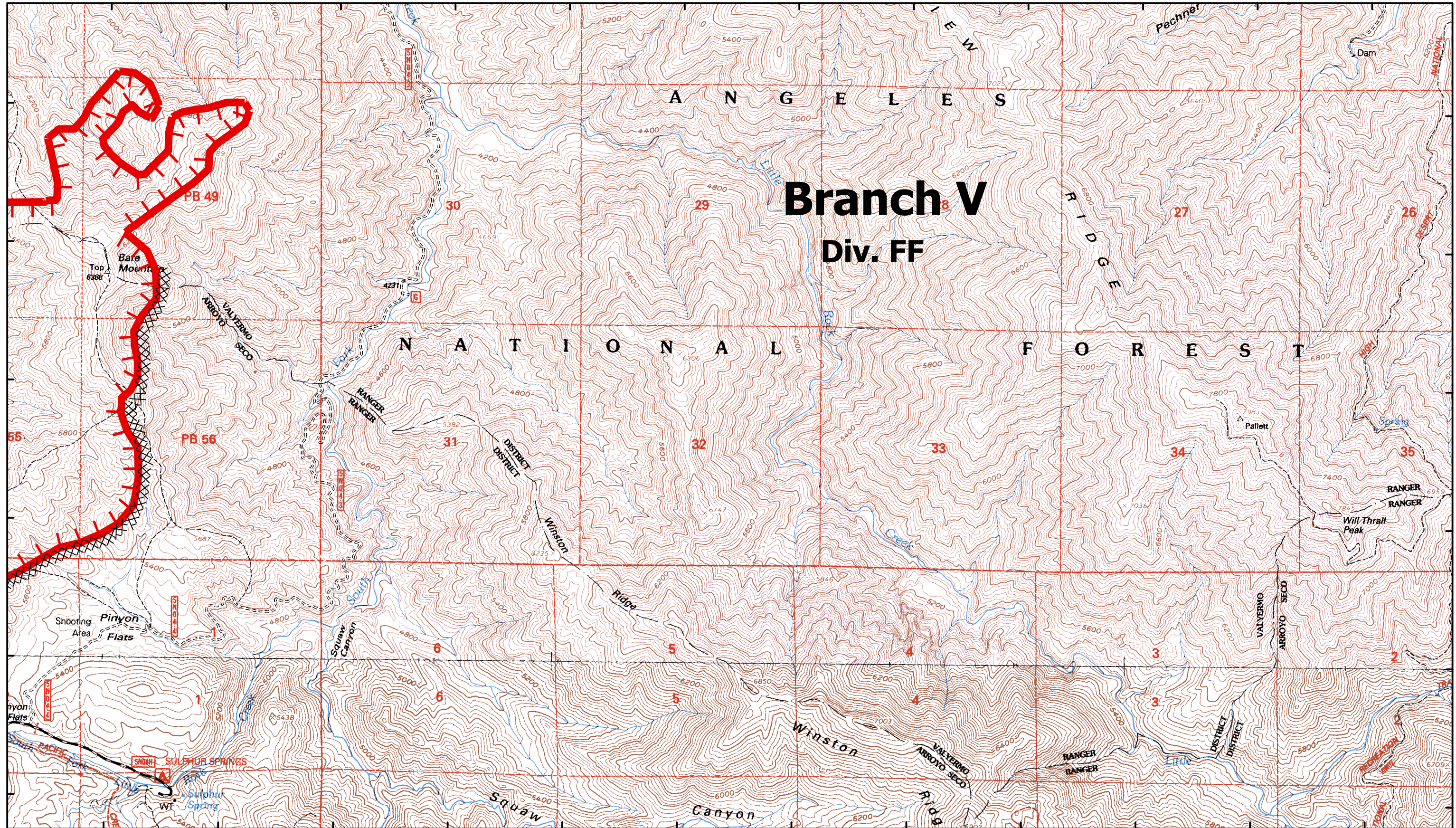


117°59'30"W 117°59'0"W 117°58'30"W 117°58'0"W 117°57'30"W 117°57'0"W 117°56'30"W 117°56'0"W 117°55'30"W 117°55'0"W 117°54'30"W 117°54'0"W

34°24'30"N
34°24'0"N
34°23'30"N
34°23'0"N
34°22'30"N
34°22'0"N

34°24'30"N
34°24'0"N
34°23'30"N
34°23'0"N
34°22'30"N
34°22'0"N

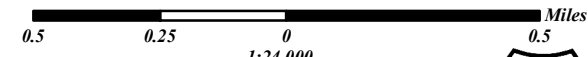


CA-ANF-3622
September 3, 2009

Map Page K-6

Station Fire Angeles National Forest

- Comm Sites
- Retardant Plant
- Drop Point
- Uncontrolled Fire Edge
- Repeater
- Staging Areas
- Helibase
- Completed Line
- Water Source
- Dip Site
- Completed Dozer Line
- Division Break
- Branch Break



1:24,000

