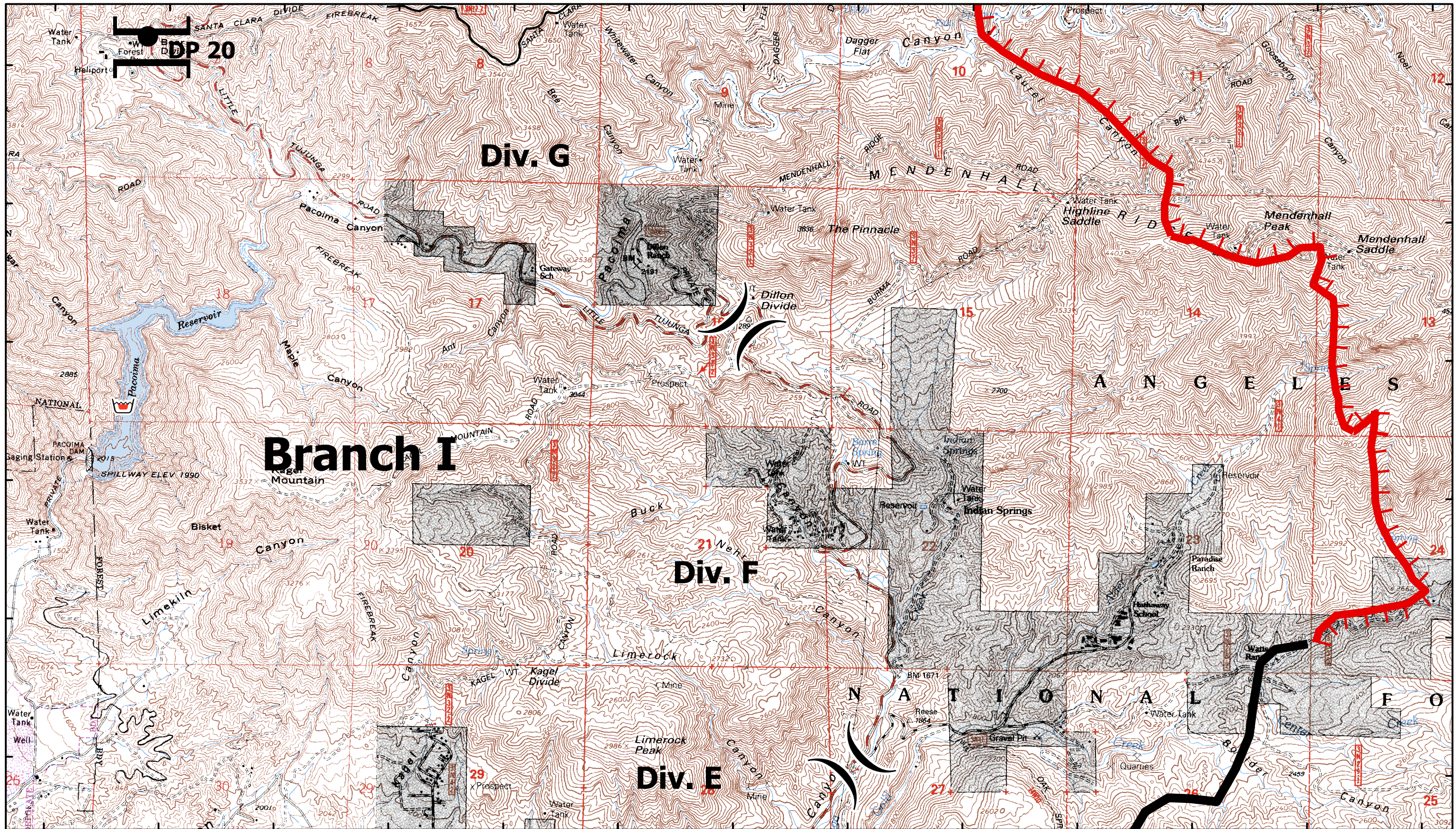


118°24'0"W 118°23'30"W 118°23'0"W 118°22'30"W 118°22'0"W 118°21'30"W 118°21'0"W 118°20'30"W 118°20'0"W 118°19'30"W 118°19'0"W 118°18'30"W 118°18'0"W

34°21'30"N
34°21'0"N
34°20'30"N
34°20'0"N
34°19'30"N
34°19'0"N

34°21'30"N
34°21'0"N
34°20'30"N
34°20'0"N
34°19'30"N
34°19'0"N



CA-ANF-3622
September 3, 2009

Map Page L-2

Station Fire
Angeles National Forest

Comm Sites	Retardant Plant	Drop Point	Uncontrolled Fire Edge) (Division Break
Repeater	Staging Areas	Helibase	Completed Line	
Water Source	Dip Site	Completed Dozer Line	Branch Break	

0.5 0.25 0 1:24,000 0.5 Miles

