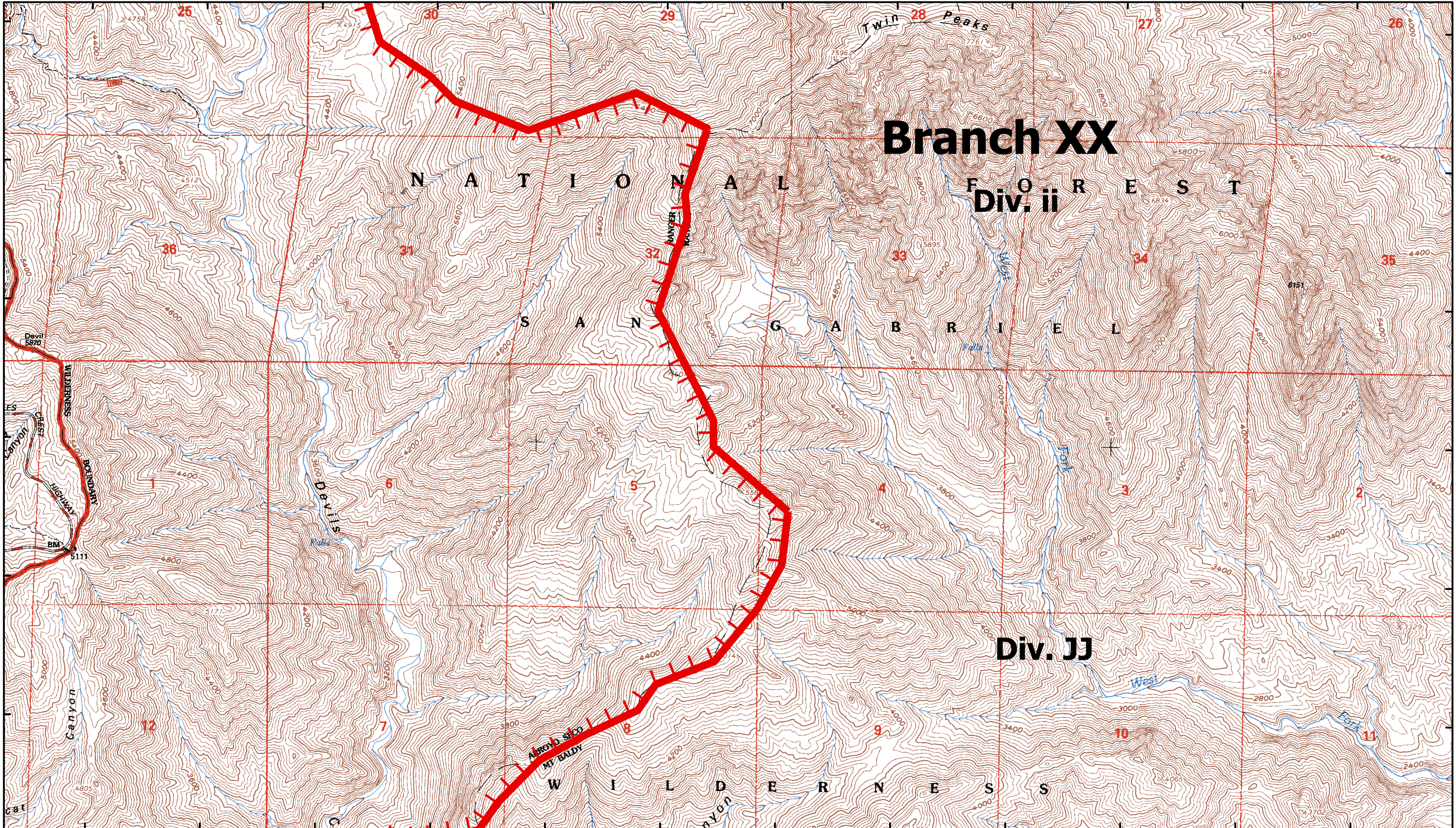


117°59'30"W 117°59'0"W 117°58'30"W 117°58'0"W 117°57'30"W 117°57'0"W 117°56'30"W 117°56'0"W 117°55'30"W 117°55'0"W 117°54'30"W 117°54'0"W

34°19'0"N
34°18'30"N
34°18'0"N
34°17'30"N
34°17'0"N
34°16'30"N

34°19'0"N
34°18'30"N
34°18'0"N
34°17'30"N
34°17'0"N
34°16'30"N



Branch XX

Div. ii

Div. JJ

Station Fire Angeles National Forest

CA-ANF-3622
September 3, 2009

Map Page M-6

- ▲ Comm Sites
- ⊕ Retardant Plant
- Drop Point
- ⌋ Division Break
- Ⓡ Repeater
- Ⓢ Staging Areas
- Ⓜ Helibase
- ⌌ Branch Break
- Ⓜ Water Source
- 🏠 Dip Site
- ⊗ Completed Dozer Line
- ▬ Completed Line

