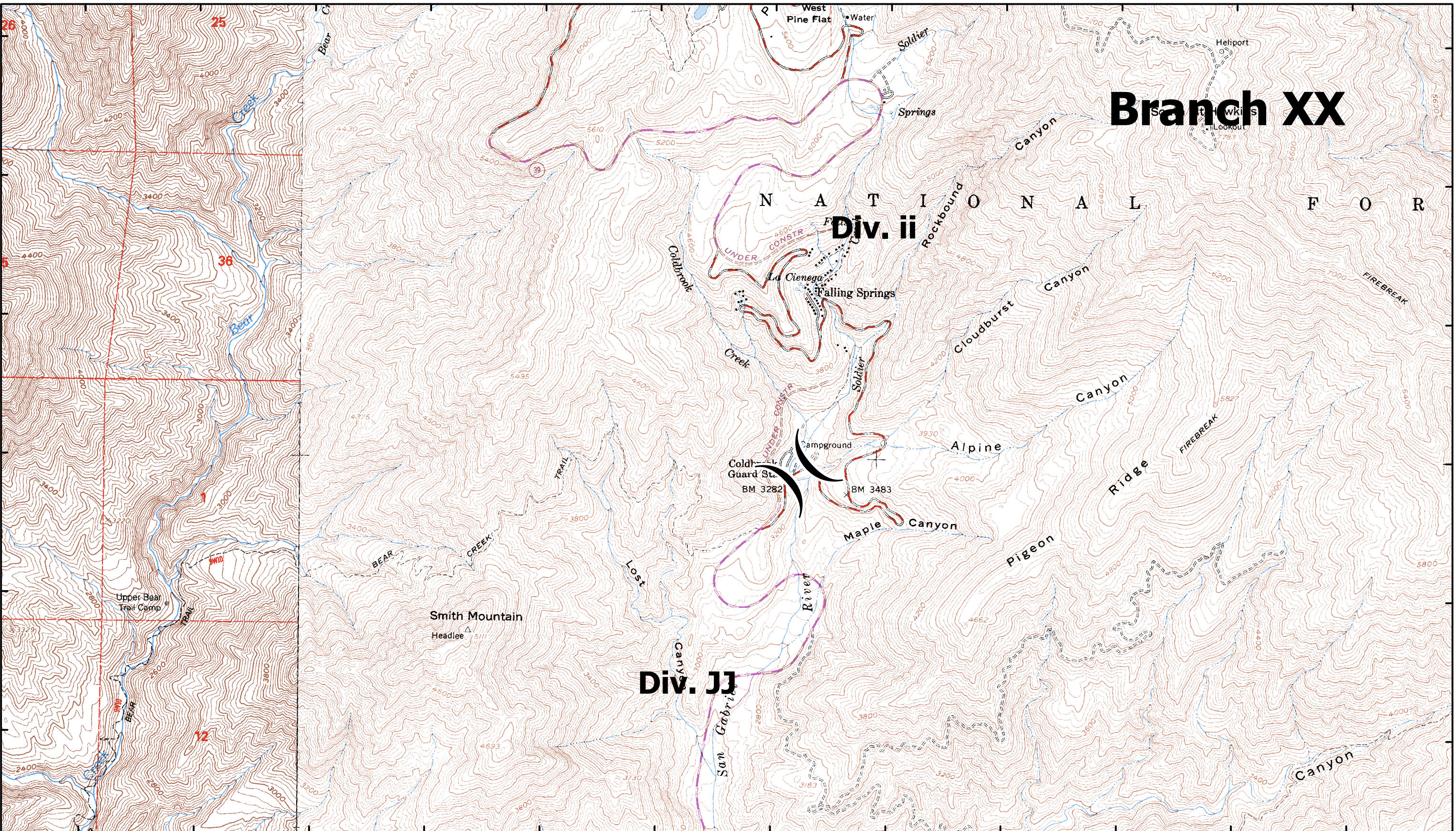


117°53'30"W 117°53'0"W 117°52'30"W 117°52'0"W 117°51'30"W 117°51'0"W 117°50'30"W 117°50'0"W 117°49'30"W 117°49'0"W 117°48'30"W 117°48'0"W

34°19'0"N
34°18'30"N
34°18'0"N
34°17'30"N
34°17'0"N
34°16'30"N

34°19'0"N
34°18'30"N
34°18'0"N
34°17'30"N
34°17'0"N
34°16'30"N



Branch XX

Div. ii

Div. JJ

CA-ANF-3622
September 3, 2009

Map Page M-7

Station Fire Angeles National Forest

- Comm Sites
- Retardant Plant
- Drop Point
- Uncontrolled Fire Edge
- Repeater
- Staging Areas
- Helibase
- Completed Line
- Water Source
- Dip Site
- Completed Dozer Line
- Division Break
- Branch Break

