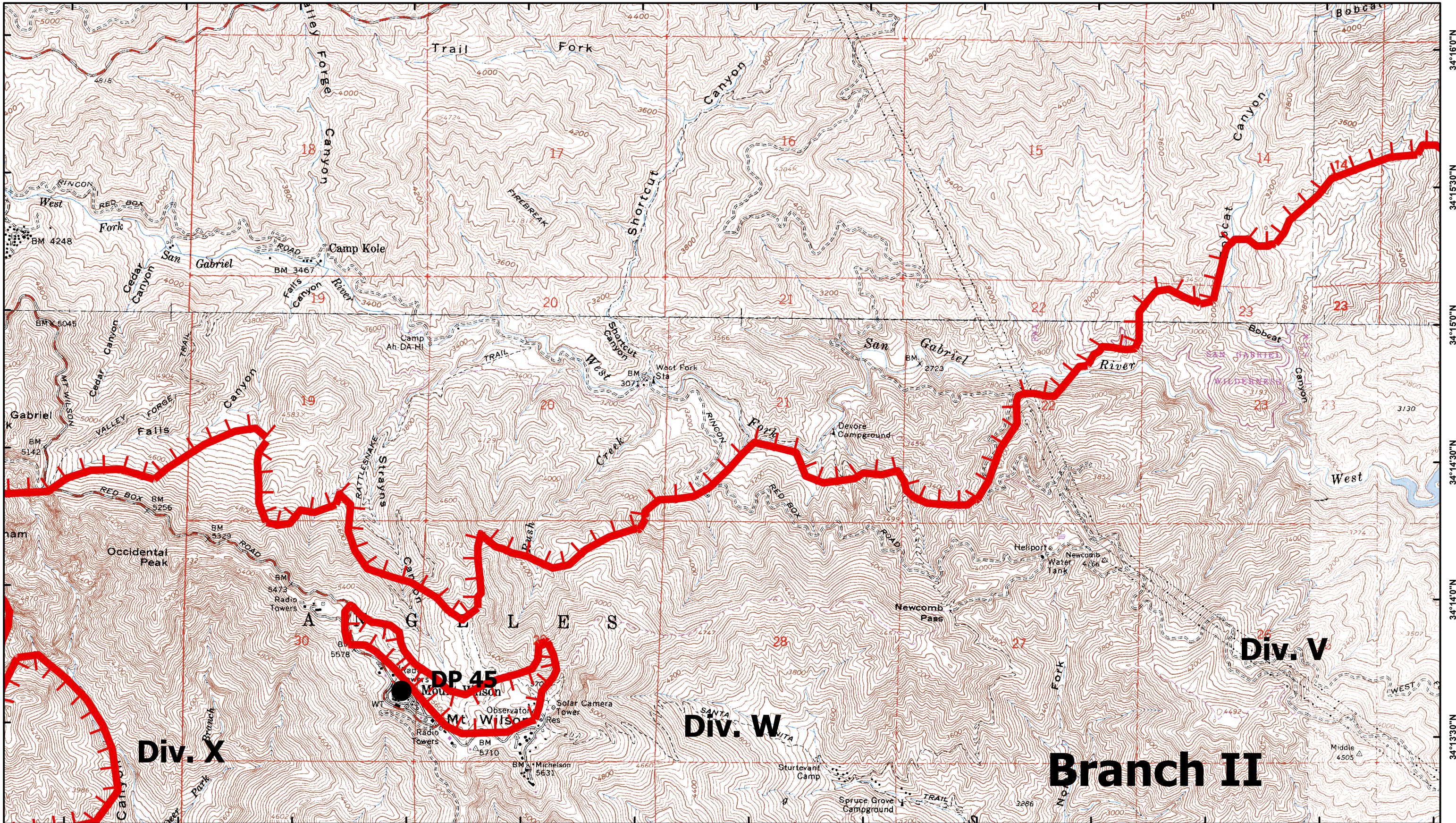


118°5'30"W 118°5'0"W 118°4'30"W 118°4'0"W 118°3'30"W 118°3'0"W 118°2'30"W 118°2'0"W 118°1'30"W 118°1'0"W 118°0'30"W 118°0'0"W

34°16'0"N
34°15'30"N
34°15'0"N
34°14'30"N
34°14'0"N
34°13'30"N

34°16'0"N
34°15'30"N
34°15'0"N
34°14'30"N
34°14'0"N
34°13'30"N



Div. X

Div. W

Div. V

Branch II

CA-ANF-3622
September 3, 2009

Map Page N-5

Station Fire Angeles National Forest

- Comm Sites
- Retardant Plant
- Drop Point
- Uncontrolled Fire Edge
- Repeater
- Staging Areas
- Helibase
- Completed Line
- Water Source
- Dip Site
- Completed Dozer Line
- Division Break
- Branch Break

