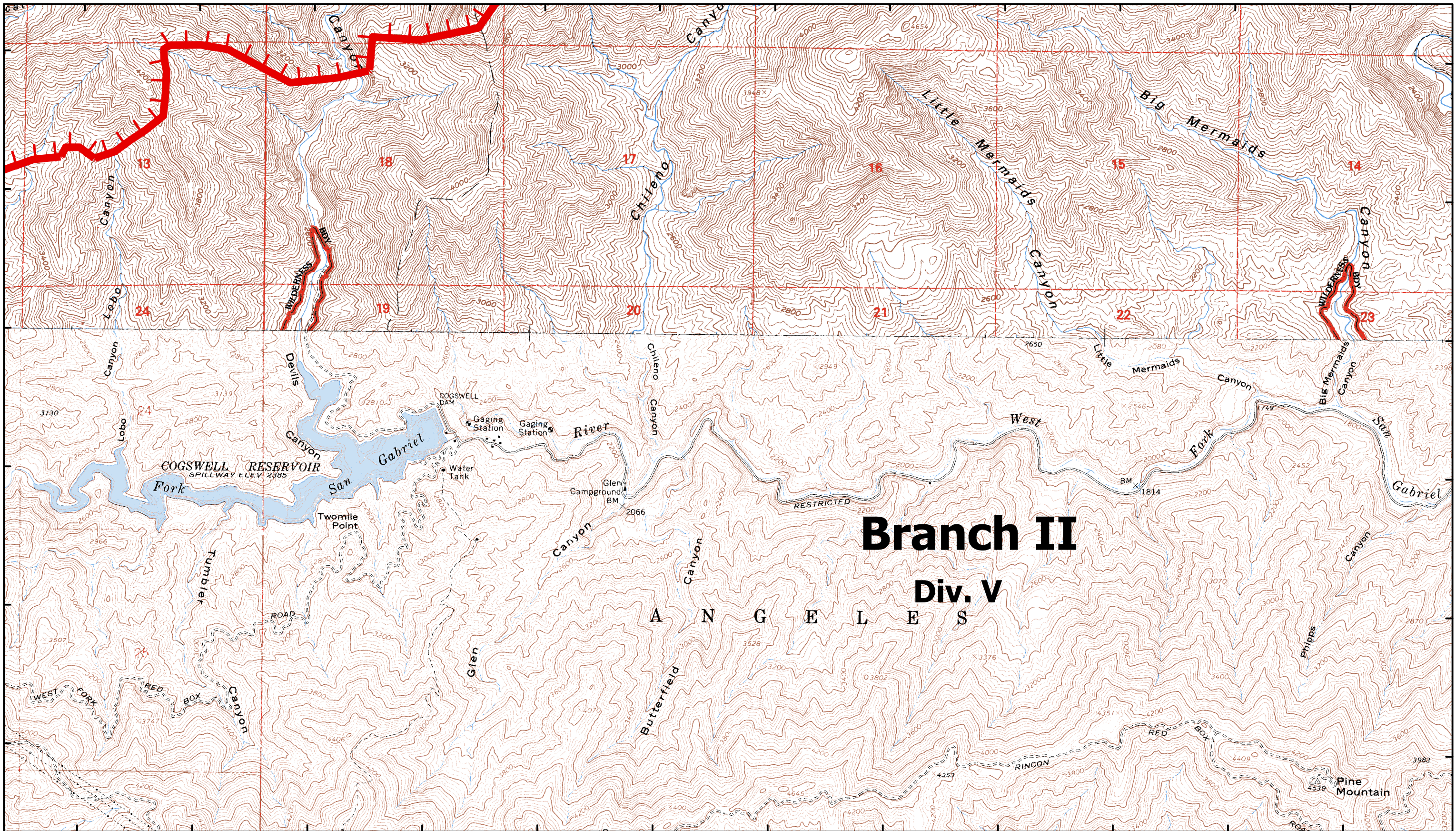


117°59'30"W 117°59'0"W 117°58'30"W 117°58'0"W 117°57'30"W 117°57'0"W 117°56'30"W 117°56'0"W 117°55'30"W 117°55'0"W 117°54'30"W 117°54'0"W

34°16'0"N  
34°15'30"N  
34°15'0"N  
34°14'30"N  
34°14'0"N  
34°13'30"N

34°16'0"N  
34°15'30"N  
34°15'0"N  
34°14'30"N  
34°14'0"N  
34°13'30"N



# Branch II Div. V

A N G E L E S

CA-ANF-3622  
September 3, 2009

Map Page N-6

## Station Fire Angeles National Forest

- ▲ Comm Sites
- ⊕ Retardant Plant
- Drop Point
- ⌈ Uncontrolled Fire Edge
- Ⓡ Repeater
- Ⓢ Staging Areas
- Ⓜ Helibase
- Completed Line
- Ⓦ Water Source
- Ⓜ Dip Site
- ⊗ Completed Dozer Line
- ) Division Break
- ] Branch Break

