

117°53'30"W 117°53'0"W 117°52'30"W 117°52'0"W 117°51'30"W 117°51'0"W 117°50'30"W 117°50'0"W 117°49'30"W 117°49'0"W 117°48'30"W 117°48'0"W

34°16'0"N
34°15'30"N
34°15'0"N
34°14'30"N
34°14'0"N
34°13'30"N

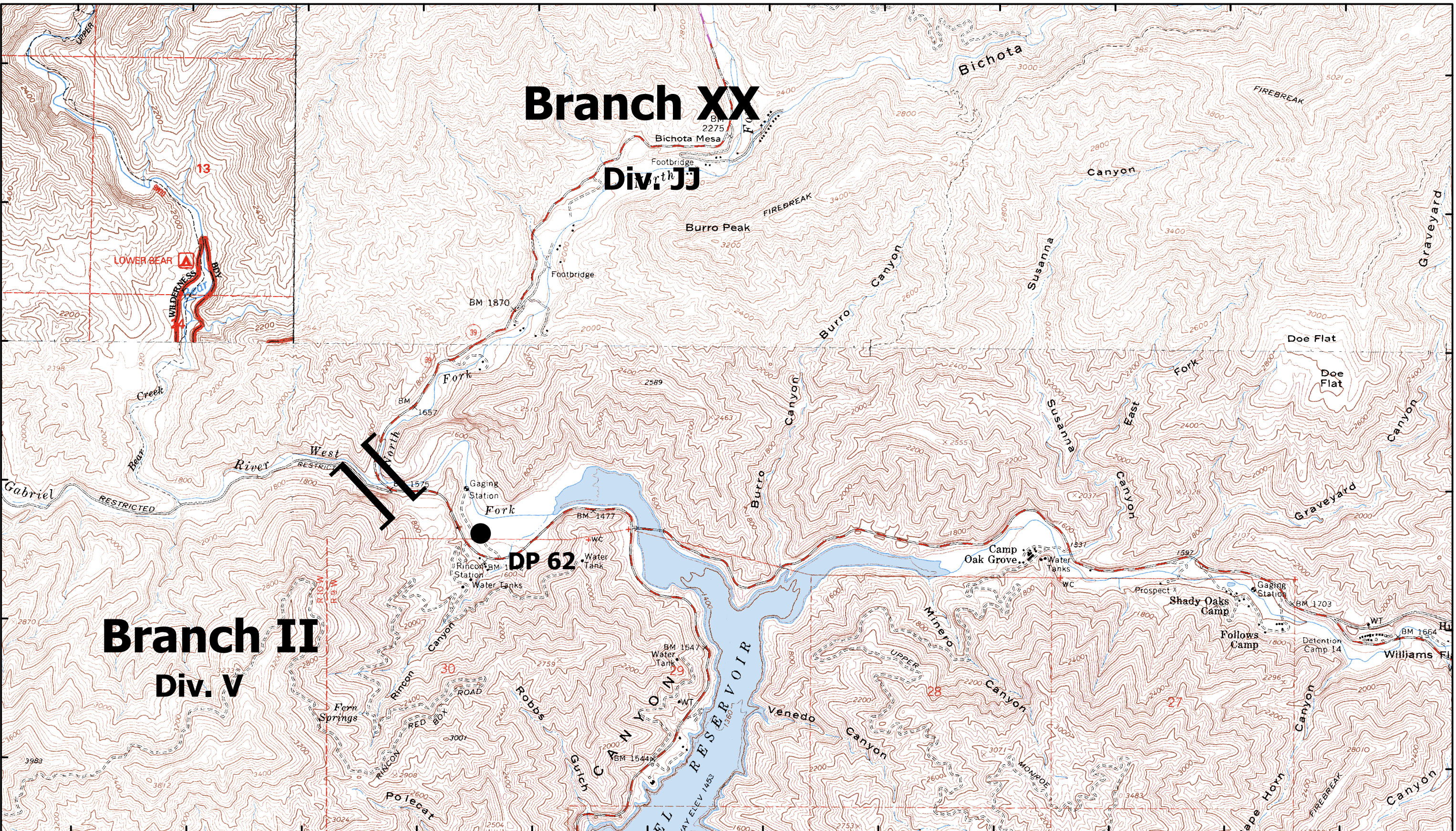
34°16'0"N
34°15'30"N
34°15'0"N
34°14'30"N
34°14'0"N
34°13'30"N

Branch XX

Div. JJ

Branch II

Div. V



CA-ANF-3622
September 3, 2009
Map Page N-7

Station Fire

Angeles National Forest

- Comm Sites
- Retardant Plant
- Drop Point
- Uncontrolled Fire Edge
- Repeater
- Staging Areas
- Helibase
- Completed Line
- Water Source
- Dip Site
- Completed Dozer Line
- Division Break
- Branch Break

0.5 Miles
0.25
0
1:24,000