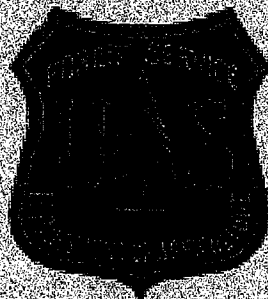


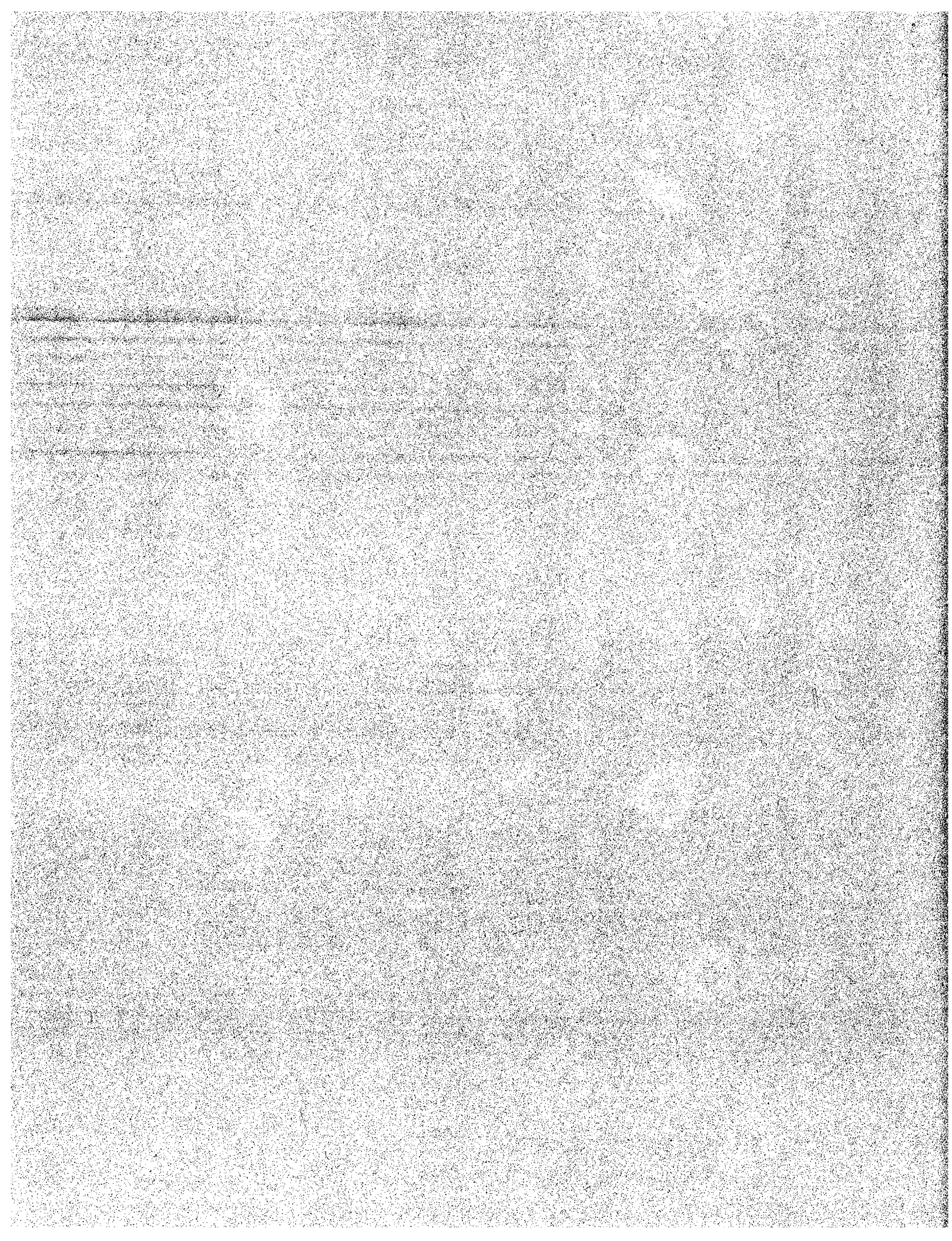
Station Fire

CA-ANF-003622

Night Operational Period
1800-0600

Monday - Tuesday
August 31 - September 1, 2009





INCIDENT OBJECTIVES	1. Incident Name	2. Date Prepared	3. Time Prepared
ICS 202	Station	08/31/2009	1000

4. Operational Period
August 31, 2009 1800-0600 hours Night Operational Period

5. General Control Objectives for the Incident (include alternatives)

Firefighter and public safety is our core value. All identified hazards will be mitigated and avoided.

Control Objectives
 Keep fire west of Highway 39 and Angeles Crest Highway
 Keep fire south of Highway 14, Pearblossom Highway, and Highway 138
 Keep fire east Interstate 5
 Keep fire north of the foothill communities and the Angeles National Forest Boundary

Management Objectives
 Manage costs commensurate with values at risk.
 Maximize protection of resources at risk.
 Keep public informed on fire progress.
 Provide for structure protection of developed properties.

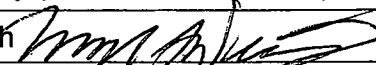
6. Weather Forecast for Period
See Attached Fire Weather Forecast.

7. General Safety Message
Safety First, Last, and Always! See Attached Safety Message

8. Special Messages

9. Attachments

X	Organization List-ICS 203	X	Medical Plan-ICS 206		Human Res. Message
X	Fire Weather Forecast	X	Safety Message		Facilities Map
X	Fire Behavior Forecast		Safety Analysis ICS 215A	X	Vicinity Map
X	Division Assignment List-ICS 204		Mop Up Standards		Phone List
	Air Ops Plan ICS-220		Finance Message	X	Unit Log ICS-214
X	Communications Plan-ICS 205	X	Training Message		

9. Prepared by (Planning Section Chief)	10. Approved by (Incident Commander)
Tim Baal	Michael Dietrich 

ORGANIZATION ASSIGNMENT LIST		INCIDENT NAME	
		Station	
2. DATE PREPARED	3. TIME PREPARED	4. OPERATIONAL PERIOD (DATE / TIME)	
08/31/2009	1400hrs	Night August 31 to Sept 1, 2009	

5. Incident Commander and Staff	
Incident Commander	USFS Mike Dietrich, LACOFD Mike Bryant, LAFD Greg West, Glendale FD Greg Godfrey Pasadena FD Martin Johnson, LASD Dave Fender
Deputy IC	Jim Giachino, Carlton Joseph (T)
Safety Officer	Marty Hamel, Sam Wilbanks
Information Officer	Leona Rodreick, Mark Savage
Liaison Officer	Rick Alpert
Human Resources	

6. Agency Representative	
AGENCY	NAME
Cal Fire	Arnie White
CHP	Craig Heller
USFS	Mike McIntyre
OES	Ish Messer (805-358-1123)
LAFD	Greg West

7. Planning Section	
Chief	Tim Baal
Deputy	Jim Kross, Rick Reeder (T)
Resources Unit	Thom Walsh, Brian Rhodes, Mike Finnerty, Bob Hawkins, Pete Hochrein
Situation Unit	Michael McHargue, Robert Verdie (T),
Documentation Unit	
Demobilization Unit	
GISS	Chris Clervi
CTSP	Rick Shellose
Training	
FBAN	Shelly Crook
IMET	
Resource Advisor	Howard Okamoto
Technical Specialist	

8. Logistics Section	
Chief	Hern Crane/Dana Simpson
Deputy	Laurence Crabtree
Supply Unit	Joe McMahon
Facilities Unit	Wally Grogan, Bob Rhoades
Ground Support Unit	Don Hill
Communications Unit	John Blachley
Medical Unit	Robert Russell
Ordering Unit	Sharon Porter
Food Unit	Bruce Ungari

9. Operations Section	
Ops Chief (Day)	
Ops Chief (Night)	Don Will
Planning Ops	Don Smith
Hansen Staging	Grant
a. BRANCH I	
BRANCH DIRECTOR	Tim Coughlin
DIVISION A	Mark Dorch
DIVISION B	Eddy Childs
DIVISION C	Craig Waag
DIVISION D	Larry Wade
b. BRANCH II	
BRANCH DIRECTOR	Gary Hart
DIVISION X	Ryan Avila
DIVISION Y / Z	Robert Bertolini
c. BRANCH IV	
BRANCH DIRECTOR	Don Forsythe
DIVISION H	Rod Lacey, Gerald Martinez
DIVISION L	Jim McDonald, Richard Sandoval
DIVISION M	Steve Griffin
d. BRANCH V	
BRANCH DIRECTOR	Barry Garten
DIVISION AA / EE	Ron Lawton, Mike Cachero
d. FOOTHILL BRANCH	
BRANCH DIRECTOR	Tom Ewald
e. ACTON BRANCH	
BRANCH DIRECTOR	Fred Bland
f. LAW BRANCH	
BRANCH DIRECTOR	Joe Badali
g. AIR OPERATIONS BRANCH	
Air Operations Branch Director	John Keesee

11. Finance Section	
Chief	Teresa Fork
Deputy	Connie Williams
Time Unit	Susan Rader, Vanessa Kobilis
Procurement Unit	Patrick Gallegos
Cost Unit	Kim Parsons
PREPARED BY: Mike Finnerty	

3/28

Fire Weather Forecast

FORECAST NO: 2

NAME OF FIRE: Station Fire

PREDICTION FOR: Night Ops

UNIT: CA-ANF

SHIFT DATE: August 31st 2009 1800-0800

SIGNED: *Matt Mehle*

TIME AND DATE

Matt Mehle

FORECAST ISSUED: Monday 8/31/09 @ 1200

Incident Meteorologist

*****RED FLAG WARNING UNTIL 9PM*****

WEATHER DISCUSSION: High pressure remains overhead with good onshore flow in the evening. That means another evening of gusty west to southwest winds will be possible. Winds will diminish gradually after sunset and eventually becoming northeast to east by morning. In addition...thermal belts over the upper slopes will remain active with another night of mild temperatures and mostly poor recoveries.

WEATHER FORECAST:

TONIGHT:

WEATHER: Mostly clear. Areas of smoke settling into lower drainages and canyons.

MIN TEMPERATURES: lower elevation 65-72

24 HOUR CHANGE: cooler 1-3

upper valleys and higher elevation 57-67

MAX HUMIDITY: Lower elevations 22-35%

24 HOUR CHANGE: wetter 2-4%

upper valleys and higher elevations 35-50%

20 FT WINDS:

RIDGETOP – Southwest to west in the evening 10-15 mph with gusts up to 25 mph...becoming north to northeast by morning 5-10 mph with gusts to 15 mph.

SLOPE/VALLEY – Southwest to west in the evening 8-13 mph with gusts up to 20 mph...becoming north to northeast by morning 3-7 mph...protected valleys becoming downslope/downvalley winds less than 5 mph for much of the night.

STABILITY/INVERSION: Weak to moderate inversion developing overnight 1500-2500 feet. Thermal belts will remain above the inversion with milder and drier conditions.

TUESDAY FORECAST:

WEATHER: Mostly clear with afternoon cumulus clouds over the ridges. Areas of smoke...especially deeper canyons and drainages.

MAX TEMPERATURES: lower elevation 93-103...higher elevation 86-95

MIN HUMIDITY: lower elevations 8-17%...upper valleys and higher elevation 12-22%

20 FT WINDS:

RIDGETOP –North to northeast in the morning 5-10 mph with gusts to 15 mph...becoming west to southwest winds 10-20 mph with gusts up to 30 mph in the afternoon.

SLOPE/VALLEY – North to northeast in the morning 4-8 mph with gusts to 12 mph...becoming west to southwest 8-15 with gusts to 25 mph. Interior locations will be terrain driven winds 5-10 mph.

Extended Outlook: Wednesday through Thursday: Onshore flow will increase over the Southland bringing some minor relief to the fire. Temperatures will cool a few degrees with more 90s and daytime humidities will be a little wetter in the teens and 20s. Due to the increased onshore flow afternoon and evening gusty west to southwest winds 10 to 20 mph will continue. Gusts 25-30 mph may be possible over the highest peaks.

WEATHER MESSAGE OF THE DAY

Take hourly weather obs to monitor wind shift and developing inversion with active thermal belts

4/28

FIRE BEHAVIOR FORECAST

FORECAST NUMBER: #7	TYPE OF FIRE: Wildfire
FIRE NAME: Station	OPERATIONAL PERIOD: Monday Night 8/31/09
DATE ISSUED: August 31, 2009	TIME ISSUED: 1200
UNIT: Angeles NF, Los Angeles County	SIGNED: /s/ Shelly Crook Shelly Crook - FBAN

INPUTS

WEATHER SUMMARY

Refer to Weather Forecast for details: **RED FLAG WARNING IN EFFECT UNTIL 9 PM PDT TONIGHT.**

Mostly sunny. Areas of smoke... especially in lower drainages and canyons. Min Temp – 57-67°. Max RH – 22-50%.
Ridgetop Winds – SW 10-15 mph gusting to 25 in PM becoming NE 5-10 mph in AM.

Slope/Valley Winds – SW 4-8 mph with gusts to 13-22 in PM becoming Downslope 2-5 mph in AM.

FUELS

Very heavy loading of decadent brush (chaparral, ceanothus, chemise, scrub oak, Manzanita) (FM5, SH5, SH7) across the entire fire area, 15 foot high with Big Cone Doug Fir in the drainage bottoms and ridge tops above 4000'.

Minimum fine fuel moisture: 2-5%, 1000 hour: 5-8%, Live fuel moisture: 60-65%. ERC's are running above 90%.

OUTPUTS - FIRE BEHAVIOR

GENERAL:

Local Thresholds for active fire behavior: Winds (over 15 mph), RH (less than 25%), Temperature (over 90°) and BI (over 201). All criteria have been exceeded. Predicted BI for today– 262 (up 9)

Fire activity last night and today was active to extreme. Expect to see similar fire behavior tonight, however we should not experience a mid shift nighttime burning period. At about 2000 the winds will shift to downslope and the fire activity should drop off slowly in until reaching a low around 0600.

Although still considered poor, expect a slight increase in humidity recovery below 2500', however the mid and upper slopes will burn actively throughout the night.

Maximum Fire Behavior (head fire upslope): ROS: 80-150 c/h (1-2 mph), Flame Length: 20 - 50 ft, Probability of Ignition: 60%. Max spotting distance of 500' to 1/3 mile.

SPECIFIC:

NORTH EAST FLANK - Expect the fire to continue spreading N/NE towards Pear Blossom and Little Rock.

Fire behavior will be greatest in the evening, dropping some as the cool/moist night air set in below 2500'.

The midslopes and ridges will continue burning actively all night under the influence of the thermal belt.

Typically, the prevailing winds will shift from W to NE around 2100-2200. These should be favorable to burning ops provided the downslope winds are not stronger than these NE winds.

SOUTH/SOUTHWEST FLANKS - The fire will continue spreading actively southwest towards the subdivisions all along I-215. Expect to see the greatest fire activity in the Big and Little Tujunga areas. Expect the winds to shift from upslope to downslope around 2100. Downslope winds may hamper any burning operations.

Due to excellent suppression efforts, expect low fire behavior in the La Canada/Alta Dena area.

WEST FLANK – As the winds shift to downslope, there is a possibility the fire may spill down the Pacoima Canyon to the east, making upslope runs towards the Divide Rd. If the fire does crest the road the downslope winds will encourage spread north towards Soledad Canyon.

EAST FLANK – Expect the fire to continue to spread actively as it moves towards Mt Wilson and the San Gabriel Wilderness. Fire activity will be greatest in the mid to upper elevations, in the thermal belt.

FEEDBACK: Collect WX obs hourly and turn in to FBAN or IMET at end of shift. Include fire behavior.

AIR OPERATIONS

- Heavy smoke from convection column may limit evening air operations. No night air operations.

SAFETY.

- **Division/Group/Crew Supervisor's:** Use the information in the FB and WX forecasts, your weather obs and your past and current on-site observations to ensure you know the most accurate and up-to-date expected fire behavior.
- "Victory is not won in miles but in inches. Win a little now, hold your ground, and later win a little more." - Louis L'Amour

5/28

ASSIGNMENT LIST

1. BRANCH	2. DIVISION/GROUP
Branch I	DIV B

3. INCIDENT NAME	4. OPERATIONAL PERIOD
Station Fire	August 31-Sept 31, 2009 DATE: Night TIME: 1800hrs - 0600hrs

5. OPERATIONS PERSONNEL	
OPERATIONS CHIEF: Don Will BRANCH DIRECTOR: Tim Coughlin BRANCH EMT's: Frank Culhno(P), Nate Derr	DIVISION/GROUP SUPERVISOR: Eddy Childs AIR ATTACK SUPERVISOR:

6. RESOURCES ASSIGNED THIS PERIOD					
STRIKE TEAM/TASK FORCE/ RESOURCE DESIGNATOR	LEADER	NUMBER PERSONS	TRANS. NEEDED	DROP OFF PT./TIME	PICKUP PT./TIME
ENG S/T XVE 1550A	VERN AISTOT	22	N	1900hrs	0700hrs
ENG S/T OES 3801A	BILL RBETTON	22	"	"	"
ENG S/T CNF 6632C	EDDIE FUIDI	22	"	"	"
VANDENBERG HOTSHOTS	JESSE HENDRICKS	18	"	"	"
SACRAMENTO HOTSHOTS	MATT BARONE	19	"	"	"
GOLDEN EAGLE HOTSHOTS	JUAN MENDEZ	23	"	"	"
WT2 BRK WT-16	STEVE SHEEHY	2	"	"	"

7. CONTROL OPERATIONS
<ul style="list-style-type: none"> Improve existing lines and burnout as needed. Patrol perimeter and mopup. Provide structure protection as needed.

8. SPECIAL INSTRUCTIONS

9. DIVISION/GROUP COMMUNICATIONS SUMMARY							
FUNCTION	FREQUENCY	SYSTEM	CHANNEL	FUNCTION	FREQUENCY	SYSTEM	CHANNEL
COMMAND	RX 168.100	KING	2	LOGISTICS	RX	KING	
	TX 170.450 (Tone 167.9)	NIFC			TX	NIFC	
TACTICAL DIV/GROUP	RX 168.050	KING	5	AIR TO GROUND	RX 167.9500	KING	11
	TX 168.050	NIFC			TX 167.9500	NIFC	

PREPARED BY (RESOURCE UNIT LEADER)	APPROVED BY (PLANNING SECTION CHIEF)	DATE	TIME
Mike Finnerty	Tim Baal <i>Jik</i>	8/31/2009	1400hrs

ASSIGNMENT LIST

1. BRANCH	2. DIVISION/GROUP
Branch I	DIV C

3. INCIDENT NAME	4. OPERATIONAL PERIOD
Station Fire	August 31-Sept 31, DATE: 2009 TIME: Night 1800hrs - 0600hrs

5. OPERATIONS PERSONNEL	
OPERATIONS CHIEF	Don Will
BRANCH DIRECTOR	Tim Coughlin
BRANCH EMT's	Frank Culhno(P), Nate Derr
DIVISION/GROUP SUPERVISOR	Craig Waag
AIR ATTACK SUPERVISOR	

6. RESOURCES ASSIGNED THIS PERIOD					
STRIKE TEAM/TASK FORCE/ RESOURCE DESIGNATOR	LEADER	NUMBER PERSONS	TRANS. NEEDED	DROP OFF PT./TIME	PICKUP PT./TIME
ENG S/T XBO 6210A	DAVE SCHULER	22	N	1900hrs	0700hrs
ENG S/T OES 6808C	GARY WHISENHAN	22	"	"	"
HC1 S/T/ 9472G			"	"	"
DZR S/T TUU 9419L (24hr)	RICHARD SANATANA		"	"	"
WT2 GLN WT-21	LANCE MENIER	2	"	"	"
WT3 WATER TENDER INC (E-171) (24hr)			"	"	"

7. CONTROL OPERATIONS
<ul style="list-style-type: none"> Improve existing lines. Patrol perimeter and mop up. Provide structure protection as needed.

8. SPECIAL INSTRUCTIONS

9. DIVISION / GROUP COMMUNICATIONS SUMMARY							
FUNCTION	FREQUENCY	SYSTEM	CHANNEL	FUNCTION	FREQUENCY	SYSTEM	CHANNEL
COMMAND	RX 168.100	KING	2	LOGISTICS	RX	KING	
	TX 170.450 (Tone 167.9)	NIFC			TX	NIFC	
TACTICAL DIV/GROUP	RX 164.1375	KING	6	AIR TO GROUND	RX 167.9500	KING	11
	TX 164.1375	NIFC			TX 167.9500	NIFC	

PREPARED BY (RESOURCE UNIT LEADER)	APPROVED BY (PLANNING SECTION CHIEF)	DATE	TIME
Mike Finnerty	Tim Baal <i>JH</i>	8/31/2009	1400hrs

ASSIGNMENT LIST

1. BRANCH	2. DIVISION/GROUP
Branch II	DIV X

3. INCIDENT NAME	4. OPERATIONAL PERIOD
Station Fire	August 31-Sept 1, 2009 DATE: 2009 TIME: Night 1800hrs - 0600hrs

5. OPERATIONS PERSONNEL			
OPERATIONS CHIEF	Don Will	DIVISION/GROUP SUPERVISOR	Ryan Avila
BRANCH DIRECTOR	Gary Hart	AIR ATTACK SUPERVISOR	
BRANCH SAFETY		BRANCH EMT'S	Jesse Green/Richard Medlin

6. RESOURCES ASSIGNED THIS PERIOD					
STRIKE TEAM/TASK FORCE/ RESOURCE DESIGNATOR	LEADER	NUMBER PERSONS	TRANS. NEEDED	DROP OFF PT./TIME	PICKUP PT./TIME
ENG S/T 4277C	Ken Bechthold	21	N	1900hrs	0700hrs
ENG S/T 2398C	Steve Davidson	21	N	"	"
ENG S/T 2200C	Josh Pero	20	N	"	"
Midwin Hotshot	Rick Moreno	20	N	"	"
Idaho Panhandlers	Christopher Smith	21	N	"	"
HC2 Cobras #2	Cody Wienk	21	N	"	"
HC2 Black Eagles #3	Frank Machler	22	N	"	"
DZR2 Taylor (E-101)	Mark Dahl	1	N	"	"
Trans (E-104)	Dave Taylor	1	N	"	"
WT1 AC (E-80)		1	N	"	"
WT2 MNF (E-387)	Jeff Vance	1	N	"	"
WT2 Dustbusters (E-147)		1	N	"	"
DOZB	John Ward	1	N	"	"

7. CONTROL OPERATIONS
<ul style="list-style-type: none"> Hold and improve fireline. Patrol and mop up.

8. SPECIAL INSTRUCTIONS
<ul style="list-style-type: none"> Line Paramedics will be shared throughout the Branch

9. DIVISION / GROUP COMMUNICATIONS SUMMARY							
FUNCTION	FREQUENCY	SYSTEM	CHANNEL	FUNCTION	FREQUENCY	SYSTEM	CHANNEL
COMMAND	RX 168.100	KING	2	LOGISTICS	RX	KING	
	TX 170.450 (Tone 167.9)	NIFC			TX	NIFC	
TACTICAL DIV/GROUP	RX 166.7250	KING	7	AIR TO GROUND	RX	KING	
	TX 166.7250	NIFC			TX	NIFC	

PREPARED BY (RESOURCE UNIT LEADER)	APPROVED BY (PLANNING SECTION CHIEF)	DATE	TIME
Janelle Walker	Tim Baal <i>[Signature]</i>	8/31/2009	1400hrs

10/28

ASSIGNMENT LIST

1. BRANCH	2. DIVISION/GROUP
Branch IV	DIV H

3. INCIDENT NAME	4. OPERATIONAL PERIOD
Station Fire	August 31-Sept 1, 2009 DATE: August 31-Sept 1, 2009 TIME: Night 1800hrs - 0600hrs

5. OPERATIONS PERSONNEL			
OPERATIONS CHIEF	Don Will	DIVISION/GROUP SUPERVISOR	Rod Lacey
BRANCH DIRECTOR	Don Forsyth	AIR ATTACK SUPERVISOR	
BRANCH EMT's	Grant Russell, Doug Boan		

6. RESOURCES ASSIGNED THIS PERIOD					
STRIKE TEAM/TASK FORCE/ RESOURCE DESIGNATOR	LEADER	NUMBER PERSONS	TRANS. NEEDED	DROP OFF PT./TIME	PICKUP PT./TIME
ENG S/T XRI 6017A	JORGE RODRIGUEZ	21	N	1900hrs	0600hrs
ENG3 TNF E-42	ERIC HUSMANN	5	"	"	"
ENG3 TNF E-72	BETH MELVILLE	5	"	"	"
BLUE RIDGE HOTSHOTS	ASAD RAHMAN	22	"	"	"
GLOBE HOTSHOTS	MARK BABIERACKI	22	"	"	"
NAVAJO HOTSHOTS	KEVIN PELLMAN	20	"	"	"
WT2 ANF WT-10	VINCE ROBAGO	2	"	"	"
WT ANF WT-37	ERIK ENGELS	2	"	"	"
FOBS	GERALD MARTINEZ	1	"	"	"

7. CONTROL OPERATIONS
<ul style="list-style-type: none"> Structure protection as needed. Support line with OPBD approval.

8. SPECIAL INSTRUCTIONS

9. DIVISION/GROUP COMMUNICATIONS SUMMARY							
FUNCTION	FREQUENCY	SYSTEM	CHANNEL	FUNCTION	FREQUENCY	SYSTEM	CHANNEL
COMMAND	RX 172.6125	KING	1	LOGISTICS	RX	KING	
	TX 164.8750 (Tone 167.9)	NIFC			TX	NIFC	
TACTICAL DIV/GROUP	RX 168.050	KING	5	AIR TO GROUND	RX	KING	
	TX 168.050	NIFC			TX	NIFC	

PREPARED BY (RESOURCE UNIT LEADER)	APPROVED BY (PLANNING SECTION CHIEF)	DATE	TIME
Mike Finnerty	Tim Baal <i>[Signature]</i>	8/31/2009	1400hrs

ASSIGNMENT LIST

1. BRANCH	2. DIVISION/GROUP
Branch IV	DIV L PAGE 1 OF 3

3. INCIDENT NAME	4. OPERATIONAL PERIOD
Station Fire	August 31- Sept 1, 2009 DATE: Night TIME: 1800hrs-0600hrs

5. OPERATIONS PERSONNEL			
OPERATIONS CHIEF	Don Will	DIVISION/GROUP SUPERVISOR	Jim McDonald
BRANCH DIRECTOR	Don Forsyth	AIR ATTACK SUPERVISOR	
BRANCH EMT's	Grant Russell, Doug Boan		

6. RESOURCES ASSIGNED THIS PERIOD					
STRIKE TEAM/TASK FORCE/ RESOURCE DESIGNATOR	LEADER	NUMBER PERSONS	TRANS. NEEDED	DROP OFF PT./TIME	PICKUP PT./TIME
ENG S/T AEU 9551C	JOE TYLER	21	"	"	1900-0700HRS
ENG S/T BDU 9350C	STEVEN SHAW	22	"	"	"
ENG S/T LAC 1140D	JOHN OBRIEN	21	"	"	"
SHASTA LAKE HOTSHOTS	JEFF MICHAELS	19	"	"	"
FEATHER RIVER HOTSHOTS	ROBERT DANIELS	20	"	"	"
DZR2 BENNETT (E-33)		1	"	"	"
DZR1 QUALITY (E-34)	JACK ELLIS	1	"	"	"
TRANS (E-)	ROSS BLASKEY	1	"	"	"
DZR1 1191K (E-45)		1	"	"	"
DZR1 PDQ (E-49)	DAN MCGARR	1	"	"	"
TRANS (E-)	TOMMY TAYLOR	1	"	"	"
DZR2 PDQ (E-100)	ALAN KROLL	1	"	"	"
TRANS (E-)	MIKE MCGREGOR	1	"	"	"

7. CONTROL OPERATIONS
<ul style="list-style-type: none"> Structure protection as needed. Conduct firing to support with OPBD approval.

8. SPECIAL INSTRUCTIONS

9. DIVISION/GROUP COMMUNICATIONS SUMMARY							
FUNCTION	FREQUENCY	SYSTEM	CHANNEL	FUNCTION	FREQUENCY	SYSTEM	CHANNEL
COMMAND	RX 172.6125	KING	1	LOGISTICS	RX	KING	
	TX 164.8750 (Tone 167.9)	NIFC			TX	NIFC	
FACTICAL DIV/GROUP	RX 164.1375	KING	6	AIR TO GROUND	RX	KING	
	TX 164.1375	NIFC			TX	NIFC	

PREPARED BY (RESOURCE UNIT LEADER)	APPROVED BY (PLANNING SECTION CHIEF)	DATE	TIME
Janelle Walker	Tim Baal <i>JTB</i>	8/31/2009	1400hrs

ASSIGNMENT LIST

1 BRANCH	2 DIVISION/GROUP
Branch IV	DIV L PAGE 3 OF 3

3 INCIDENT NAME	4 OPERATIONAL PERIOD
Station Fire	August 31- Sept 1, 2009 DATE: Night TIME: 1800hrs-0600hrs

5 OPERATIONS PERSONNEL	
OPERATIONS CHIEF	Don Will
BRANCH DIRECTOR	Don Forsyth
BRANCH EMT's	Grant Russell, Doug Boan
DIVISION/GROUP SUPERVISOR	Jim McDonald
AIR ATTACK SUPERVISOR	

6 RESOURCES ASSIGNED THIS PERIOD					
STRIKE TEAM/TASK FORCE/ RESOURCE DESIGNATOR	LEADER	NUMBER PERSONS	TRANS. NEEDED	DROP OFF PT./TIME	PICKUP PT./TIME
WT2 DUSTBUSTERS (E-123)		1	N	*	1900-0700HRS
WT3 MESSINA WT588 (E-172)	DAN MESSINA	1	*	*	"
WT3 MESSINA WT173 (E-173)	JIM DOSS	1	*	*	"
FOBS	RICHARD SANDOVAL	1	*	*	"
DOZB	GREG THOMAS	1	*	*	"
DOZB	MICHAEL HISLOP	1	*	*	"
STEN	TODD FREEMAN	1	*	*	"

7 CONTROL OPERATIONS
<ul style="list-style-type: none"> Structure protection as needed. Conduct firing to support with OPBD approval.

8 SPECIAL INSTRUCTIONS

9 DIVISION/ GROUP COMMUNICATIONS SUMMARY							
FUNCTION	FREQUENCY	SYSTEM	CHANNEL	FUNCTION	FREQUENCY	SYSTEM	CHANNEL
COMMAND	RX 172.6125	KING	1	LOGISTICS	RX	KING	
	TX 164.8750 (Tone 167.9)	NIFC			TX	NIFC	
TACTICAL DIV/GROUP	RX 164.1375	KING	6	AIR TO GROUND	RX	KING	
	TX 164.1375	NIFC			TX	NIFC	
PREPARED BY (RESOURCE UNIT LEADER)			APPROVED BY (PLANNING SECTION CHIEF)		DATE	TIME	
Janelle Walker			Tim Baal <i>JK</i>		8/31/2009	1400hrs	

15/28

ASSIGNMENT LIST

1 BRANCH	2 DIVISION/GROUP
Branch IV	DIV M

3 INCIDENT NAME	4 OPERATIONAL PERIOD
Station Fire	DATE: August 31-Sept 1, 2009 TIME: Night 1800hrs-0600hrs

5 OPERATIONS PERSONNEL	
OPERATIONS CHIEF	Don Will DIVISION/GROUP SUPERVISOR Steve Griffin
BRANCH DIRECTOR	Don Forsyth AIR ATTACK SUPERVISOR
BRANCH EMT's	Grant Russell, Doug Boan

6 RESOURCES ASSIGNED THIS PERIOD					
STRIKE TEAM/TASK FORCE/ RESOURCE DESIGNATOR	LEADER	NUMBER PERSONS	TRANS. NEEDED	DROP OFF PT./TIME	PICKUP PT./TIME
ENG S/T XTB 4228C	DAVE RUBEN	21	N	1900hrs	0600hrs
ENG S/T SHF 3675C	KEITH ORR	21	"	"	"
BRECKENRIDGE HOTSHOTS	ADAM SANDERS	19	"	"	"
GILA HOTSHOTS	DEWEY REBBE	20	"	"	"
HC2 FORT APACHE #16	ALFRED DOSELA	21	"	"	"
HC2 SAN CARLOS #25	DARWIN SWIMMER	20	"	"	"
DZR2 FAIRVIEW	CONRAD BATHAM	1	"	"	"
TRANS FAIRVIEW			"	"	"
WT1 RAINMAN (E-369)	WALT WEATHER	1	"	"	"
WT2 CHRISTMAS TREES (E-371)	TOM MALLOI	1	"	"	"

7 CONTROL OPERATIONS
<ul style="list-style-type: none"> Hold and construct direct line. Keep fire in containment.

8 SPECIAL INSTRUCTIONS
<ul style="list-style-type: none">

9 DIVISION / GROUP COMMUNICATIONS SUMMARY							
FUNCTION	FREQUENCY	SYSTEM	CHANNEL	FUNCTION	FREQUENCY	SYSTEM	CHANNEL
COMMAND	RX 172.6125	KING	1	LOGISTICS	RX	KING	
	TX 164.8750 (Tone 167.9)	NIFC			TX	NIFC	
TACTICAL DIV/GROUP	RX 164.1375	KING	6	AIR TO GROUND	RX	KING	
	TX 164.1375	NIFC			TX	NIFC	

PREPARED BY (RESOURCE UNIT LEADER)	APPROVED BY (PLANNING SECTION CHIEF)	DATE	TIME
Janelle Walker	Tim Baal <i>JL</i>	8/31/2009	1400hrs

16/28

ASSIGNMENT LIST

1. BRANCH	2. DIVISION/GROUP
Acton Branch	

3. INCIDENT NAME	4. OPERATIONAL PERIOD
Station Fire	DATE: August 31-Sept 1, 2009 TIME: Night 1800hrs - 0600hrs

5. OPERATIONS PERSONNEL			
OPERATIONS CHIEF	Don Will	DIVISION/GROUP SUPERVISOR	
BRANCH DIRECTOR	Fred Bland	AIR ATTACK SUPERVISOR	

6. RESOURCES ASSIGNED THIS PERIOD

STRIKE TEAM/TASK FORCE/ RESOURCE DESIGNATOR	LEADER	NUMBER PERSONS	TRANS. NEEDED	REPORTING LOCATION	DROP OFF PICKUP PT./TIME
ENG S/T XLE1284A	Mark Gillespie	22	N	Soledad East of Crown Valley	1900-0700hrs
ENG S/T LAC 1119A	Mike Saenz	22	N	*	1900-0700hrs
ENG S/T LAC 1150A	Troy Flath	21	N	*	1900-0700hrs
ENG S/T OES 1801A	Kevin Collinge	21	N	*	1900-0700hrs
ENG S/T XLE 1285A	Anthony Adam	21	N	*	1900-0700hrs
ENG S/T LAC 1109A	Bruce Dean	21	N	*	1900-0700hrs
ENG S/T XRI 6016A	Silvo Lanzas	21	N	*	1900-0700hrs
ENG S/T LAC 1135A	Bruce Arvizu	22	N	*	1900-0700hrs
ENG S/T LAC 1137A	Mitch Brookhyser	21	N	*	1900-0700hrs

7. CONTROL OPERATIONS

- Prep and protect structures as directed by Branch and fire conditions.

8. SPECIAL INSTRUCTIONS

9. DIVISION / GROUP COMMUNICATIONS SUMMARY

FUNCTION	FREQUENCY	SYSTEM	CHANNEL	FUNCTION	FREQUENCY	SYSTEM	CHANNEL
COMMAND	RX 168.100	KING	2	LOGISTICS	RX	KING	
	TX 170.450 (Tone 167.9)	NIFC			TX	NIFC	
FACTUAL DIV/GROUP	RX 154.2650	KING	9	AIR TO GROUND	RX	KING	
	TX 154.2650	NIFC			TX	NIFC	

PREPARED BY (RESOURCE UNIT LEADER)	APPROVED BY (TRAINING SECTION CHIEF)	DATE	TIME
Janelle Walker	Tim Baal <i>[Signature]</i>	8/31/2009	1400hrs

18/29

1. BRANCH LAW ENFORCEMENT	3. DIVISION/GROUP	<h1 style="margin: 0;">ASSIGNMENT LIST</h1>
-------------------------------------	--------------------------	---

3. INCIDENT NAME STATION FIRE	4. OPERATIONAL PERIOD (DATE/TIME) 09-01-09 1800-0600
---	--

5. OPERATIONAL PERSONNEL OPERATIONS CHIEF BADALI, JOE BRANCH DIRECTOR	DIVISION/GROUP SUPERVISOR AIR TACTICAL GROUP SUPERVISOR
--	--

6. RESOURCES ASSIGNED THIS PERIOD

STRIKE TEAM/TASK FORCE/ RESOURCE DESIGNATOR	EMT	LEADER	NUMBER PERSONS	TRANS. NEEDED	PICKUP PT./TIME	DROP OFF PT./TIME
PATROL		LUCIA, ANTHONY	200			
DISASTER COMMUNICATION			14			
HWY 14 PATROL			100			

7. CONTROL OPERATIONS CONTINUE TO SECURE EVACUATED AREAS AND PATROL FOR POTENTIAL LOOTERS.
--

8. SPECIAL INSTRUCTIONS CONTACT LASD COMMAND POST 323-979-7228
--

9. DIVISION/GROUP COMMUNICATIONS SUMMARY

FUNCTION	FREQ.	SYSTEM	CHAN.	FUNCTION	FREQ.	SYSTEM	CHAN.
COMMAND	LOCAL	C TAC 2		SUPPORT			
	REPEAT						
DIV./GROUP TACTICAL	MUTUAL AID 1			GROUND TO AIR			

PREPARED BY (RESOURCE UNIT LEADER) DINSMOOR, RICHARD	APPROVED BY (PLANNING SECT. CH.) GUYOVICH, CHRISTY	DATE 08-31-09	TIME 1132 HRS.
---	---	------------------	-------------------

INCIDENT RADIO COMMUNICATIONS PLAN	Incident Name	Date/Time Prepared	Operational Period Date/Time
	STATION INCIDENT	8/31/2009 12:05 PM	August 31-Sept 1, 2009 1800-0600

Ch #	Function	Channel Name / Trunked Radio System Talkgroup	Assignment	Frequency N or W	Tone / NAC	Mode A, D or M	Remarks
1	COMMAND	NIFC C-19	BRANCH III,IV,V	Rx - 172.6125 Tx - 164.8750	Tx 167.9	A	GLEASON PEAK
2	COMMAND	NIFC C-2	ALL INCIDENT	Rx - 168.100 Tx - 170.450	Tx 167.9	A	Mt. LUKENS
3	REPEATER	NIFC C-9	BRANCH IV COMM	Rx- 170.0125 Tx- 165.2500	Tx 167.9	A	MAGIC MTN
4							
5	TACTICAL	NIFC TAC 1	DIV. A,B,H,AA,EE	Rx - 168.050 Tx - 168.050		A	BRANCH I AND IV
6	TACTICAL	NIFC TAC 4	DIV. C, D, L, M	Rx - 164.1375 Tx - 164.1375		A	BRANCH 1 AND IV
7	TACTICAL	NIFC TAC 5	DIVISION X,Y,Z,	Rx - 166.7250 Tx - 166.7250		A	BRANCH II
8	TACTICAL	NIFC TAC 6	DIV C GRD FIRE OPS	Rx - 166.7750 Tx - 166.7750		A	DIV C GRD FIRING OPS ONLY
9	TACTICAL	White 2	ACTON SBP	Rx - 154.2650 Tx - 154.2650	W	A	STRUCTURE PROTECTION
10	TACTICAL	White 3	FOOTHILL SBP	Rx - 154.2950 Tx - 154.2950	W	A	STURCTURE PROTECTION
11	AIR TO GROUND	A/G 1	BRANCH III,IV,V	RX- 167.9500 Tx- 167.9500		A	A/G 2
12	AIR TO GROUND	A/G 2	BRANCH I,II	Rx - 169,1125 Tx - 169.1125		A	A/G 1
13	AIR TO GROUND	A/G 3	AS ASSIGNED	Rx-166.9125 Tx-166.9125		A	FIRING OPERATIONS ONLY
14	AIR GUARD			Rx - 168.6250 Tx - 168.6250	TX 110.9	A	EMERGENCY USE ONLY
15							
16	AIR GUARD			Rx - 168.6250 Tx - 168.6250	TX 110.9	A	EMERGENCY USE ONLY

Prepared by (Communications Unit) JOHN T. BLACHLEY COM1

John T Blachley

MEDICAL PLAN	1. INCIDENT NAME Station Fire	2. DATE PREPARED 8/31/2009	3. TIME PREPARED 1000	4. OPERATIONAL PERIOD 8/31/2009 Night 1800/0600
---------------------	---	-------------------------------	--------------------------	---

5. INCIDENT MEDICAL AID STATIONS			
MEDICAL AID STATIONS	LOCATION	PARAMEDICS	
		YES	NO
Station ICP	Hansen Dam	XX	

6. TRANSPORTATION				
NAME	ADDRESS	PHONE	PARAMEDICS	
			YES	NO
Glendale RA 21	Hansen Dam	818-897-4696	XX	
LAC Mobile Aid 32	LAC FS 80	323-881-6183	XX	
LAC East Valley Air Squad	Brackett Field LAC Command and Control	323-881-6183	XX	
Sheriffs Air Rescue 5	Barley Flats 1000-2000 LAC Command and Control	323-881-6183	XX	

7. HOSPITALS								
NAME	ADDRESS	TRAVEL TIME		PHONE	HELIPAD		BURN CENTER	
		AIR	GRND		YES	NO	YES	NO
Verdugo Hills Hospital	1812 Verdugo Bl. Glendale, CA 91208	N/A	15 Min.	818-952-2222		XX		XX
Huntington Memorial Hospital (Level 2 Trauma)	100 W. California Bl. Pasadena, CA 9105	5 Min.	20 Min.	626-397-8189	XX			XX
Providence Holy Cross Hospital (Level 2 Trauma)	15031 Rinaldi St. Mission Hills, CA 91345	10Min	30 Min.	818-898-4540	XX			XX
LAC/USC Medical Center Level 1 Trauma Center	1200 N. State St. Los Angeles, CA 90033	10 Min	30 Min.	323-226-7991	XX		XX	
Glendale Memorial Hospital	1420 S. Central Ave. Glendale, CA 91209	N/A	30 Min.	818-502-2344		XX		XX
Henry Mayo Hospital	23845 Mc Bean Pkwy Valencia, CA 91355	10 Min	30 Min.	661-253-8112	XX			XX
Antelope Valley Hospital	1600 W. Ave "J" Lancaster, CA	15 Min	30 Min	661-949-5115	XX			XX

8. MEDICAL EMERGENCY PROCEDURES	
<ul style="list-style-type: none"> When an injury occurs, initiate care with available resources at scene and notify DIVS. The DIVS shall coordinate the incident and direct necessary actions. Scene manager (DIVS or ranking overhead) shall make notifications, determine appropriate EMS response (BLS, ALS), and recommend the most appropriate method of transport (Medivac, Ground). Establish a back-up plan. For serious or life threatening injuries, the DIVS or OPBD shall contact the Com Unit to advise nature and location of the incident and request appropriate additional resources. The Com Unit will notify the IC, Med Unit, Safety Officer, and OPSC. Upon request of DIVS, OPBD or OPSC, the Com Unit shall limit all non-essential traffic on command by declaring a "Medical Emergency" to be lifted as soon as practical. 	<p style="text-align: center;"><u>PATIENT INFORMATION</u></p> <p>✓</p> <p><input type="checkbox"/> Patient 1 of _____</p> <p><input type="checkbox"/> Emergency _____ Non Emergency _____</p> <p><input type="checkbox"/> Is helicopter medivac required for transportation? Yes _____ No _____</p> <p><input type="checkbox"/> Location _____</p> <p>Lat _____ Long _____</p> <p><input type="checkbox"/> Age _____ Sex _____ Weight _____</p> <p><input type="checkbox"/> Severity: Minor _____ Delayed _____</p> <p>Immediate _____</p> <p><input type="checkbox"/> Chief Complaint _____</p> <p><input type="checkbox"/> Any additional resources required _____</p>

ICS 206	9. PREPARED BY (MEDICAL UNIT LEADER) Robert Russell MEDL <i>[Signature]</i>	10. REVIEWED BY (SAFETY OFFICER) Marty Hamel SOF <i>[Signature]</i> 20R
---------	--	--

23/28

STATION INCIDENT SAFETY MESSAGE

Monday-Tuesday Night Shift

08/31 - 09/01/2009 1800-0600

MAJOR HAZARDS:

- POTENTIAL FOR EXTREME FIRE BEHAVIOR WITH ALLIGNMENT OF WIND/SLOPE.
- DOWN POWERLINES, ROCKS, HAZARDOUS MATERIALS IN BURNED AREAS.
- HEAT STRESS AND FATIGUE.

Fire Order of the day: Maintain Control of your forces at all times.

- **Fire Behavior** – Drought conditions and continued hot, dry weather have resulted in live fuel moisture contents of 60-65 Percent and dead fuel moistures of 2-5 percent! Even at night this is resulting in extreme fire behavior. To mitigate this concern maintain situational awareness; establish LCEs; follow the 10 Standard Orders; mitigate the 18 Situations.
- **Communication** – With a large number of new resources unfamiliar with the area and local conditions every day is much like a transition. To mitigate the constantly changing situation provide your resources thorough briefings prior to engaging in suppression activities.
- **Hazardous Terrain** - Steep terrain is one of the most serious hazards on this incident. Rolling material is a major issue. Rocks have been loosened or dislodged by the fire. Evaluate your work area closely before entering. Spread workers out farther than 10 feet apart. Stagger workers so they are not working or walking directly below each other.
- **Hydration & Fatigue** – With the current weather, even at night, problems to escalate as temperatures heat up. Monitor yourself and those you supervise for symptoms. Be alert for signs of fatigue and take breaks as necessary. Maintain 2:1 work/rest ratio. Pace yourselves.

MOUNTAIN DRIVING

Driving presents one of the greater risks faced by personnel on this incident. Drive defensively at appropriate speeds which allow you to react to meeting the unexpected. Be able to stop your vehicle within one half of the visible distance on blind curves. Driving demands your full attention. Pull off the road in a safe location when placing or receiving a cell phone call. Chock vehicles parked on slopes. Use jackers whenever available.

Symptoms & Signs of Heat Illness

Heat Exhaustion: Victim will have cool, clammy skin; pale coloring; feel weak, dizzy and/or nauseous.

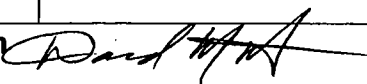
Treatment – Have individual sit in shade or cool area; administer fluids; loosen clothing and assure rest.

Heat Stroke: This is a life-threatening medical emergency!!

Victim will have hot, dry, red skin and possible convulsions. These symptoms can progress to unconsciousness and death!

Treatment – Initiate emergency medical procedures outlined in incident Med Plan. Immediately cool individual's body by pouring water over them, especially the head and upper body. Monitor the victim and provide whatever medical support necessary. Placing ice around the neck, groin and armpits can help speed the cool down.

Safety Officers: Marty Hamel & David Morton



24/28



STRESS REMINDERS

- **Take action, don't ignore your stress**
- **Stay in touch with team members and communicate**
- **Talk and share feelings**
- **Replenish, rest, get some down time**

Stress is normal and everyone has it

**PRACTICE RANDOM ACTS OF KINDNESS!
IT WILL MAKE ANOTHER PERSON'S DAY!
IT WILL MAKE YOUR DAY!**

Human Resource Specialist

210 Freeway

Overflow Parking

Foothill Blvd.

Staging

Mobile
Sleeping
Unit

Command Post

Laundry
Showers

Kitchen

Lunch
Ice/Water

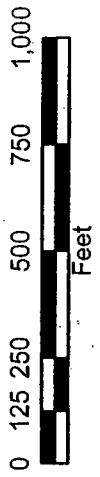
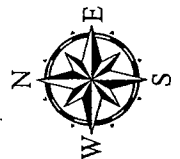
Law Enforcement
Supply

Out of Bounds
Soccer Fields

Ground Support
Fuel Tender
Mechanic

Sleeping
CDC

Sleeping
General



26/28

Station Fire

CA-ANF-3622

August 31, 2009

Travel Map

