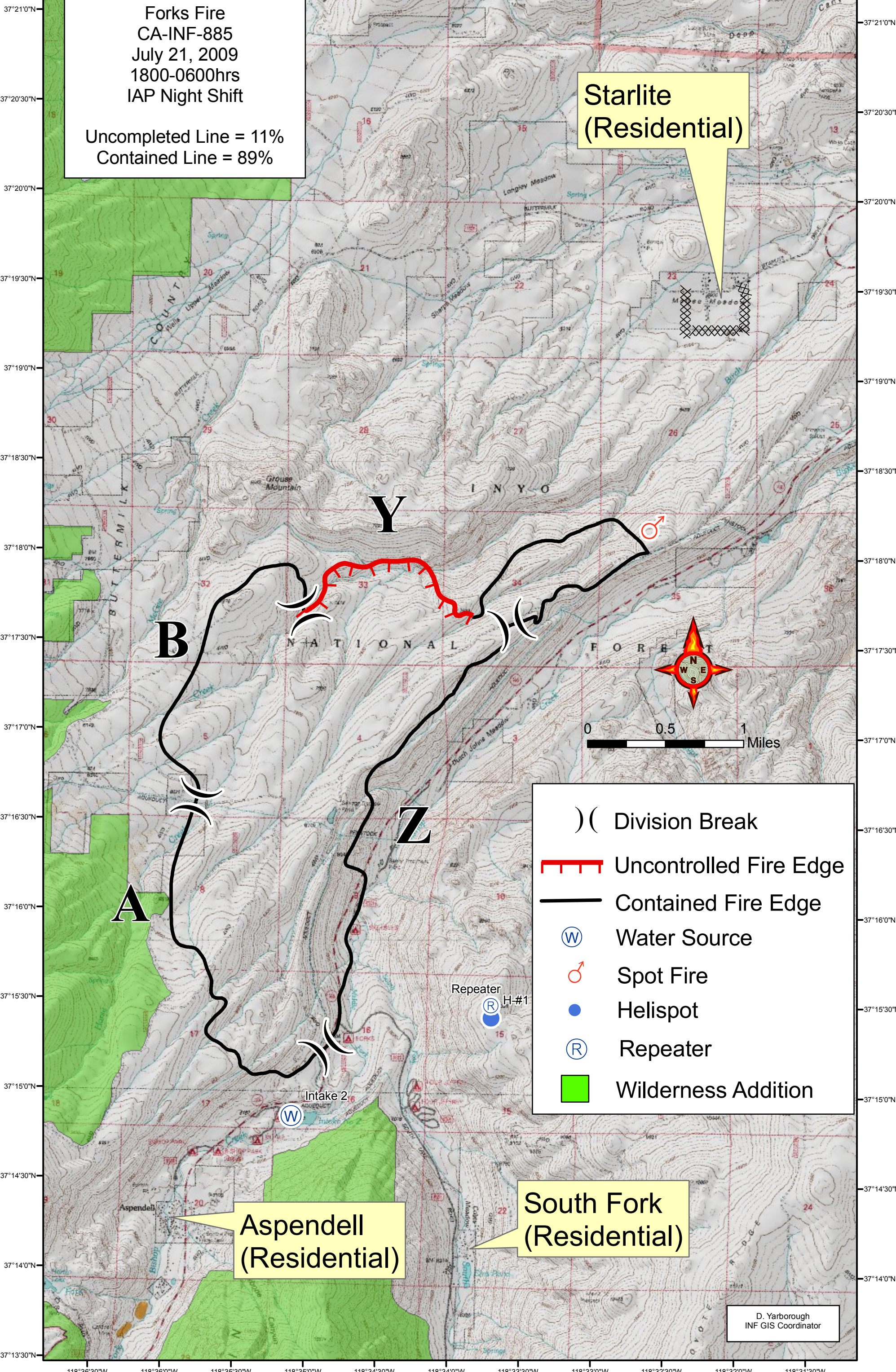


118°36'30"W 118°36'0"W 118°35'30"W 118°35'0"W 118°34'30"W 118°34'0"W 118°33'30"W 118°33'0"W 118°32'30"W 118°32'0"W 118°31'30"W



Forks Fire
CA-INF-885
July 21, 2009
1800-0600hrs
IAP Night Shift

Uncompleted Line = 11%
Contained Line = 89%

Starlite
(Residential)

Aspendell
(Residential)

South Fork
(Residential)

-) (Division Break
- Uncontrolled Fire Edge
- Contained Fire Edge
- Water Source
- Spot Fire
- Helispot
- Repeater
- Wilderness Addition



0 0.5 1 Miles

D. Yarborough
INF GIS Coordinator