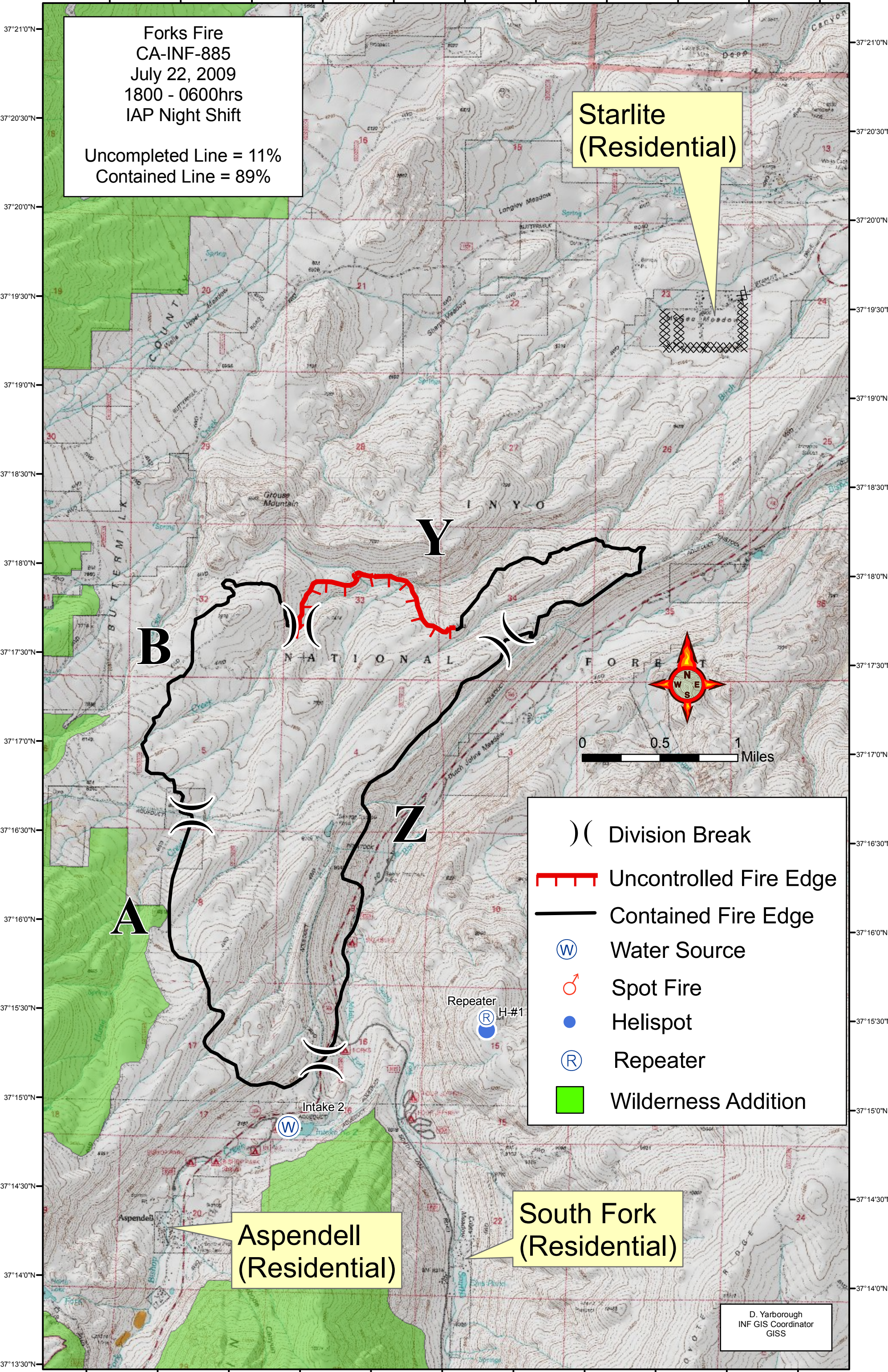


118°36'30"W 118°36'0"W 118°35'30"W 118°35'0"W 118°34'30"W 118°34'0"W 118°33'30"W 118°33'0"W 118°32'30"W 118°32'0"W 118°31'30"W







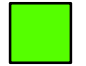


Forks Fire  
CA-INF-885  
July 22, 2009  
1800 - 0600hrs  
IAP Night Shift  
  
Uncompleted Line = 11%  
Contained Line = 89%

Starlite  
(Residential)

Aspendell  
(Residential)

South Fork  
(Residential)

- ) ( Division Break
-  Uncontrolled Fire Edge
-  Contained Fire Edge
-  Water Source
-  Spot Fire
-  Helispot
-  Repeater
-  Wilderness Addition



0 0.5 1 Miles

D. Yarborough  
INF GIS Coordinator  
GISS