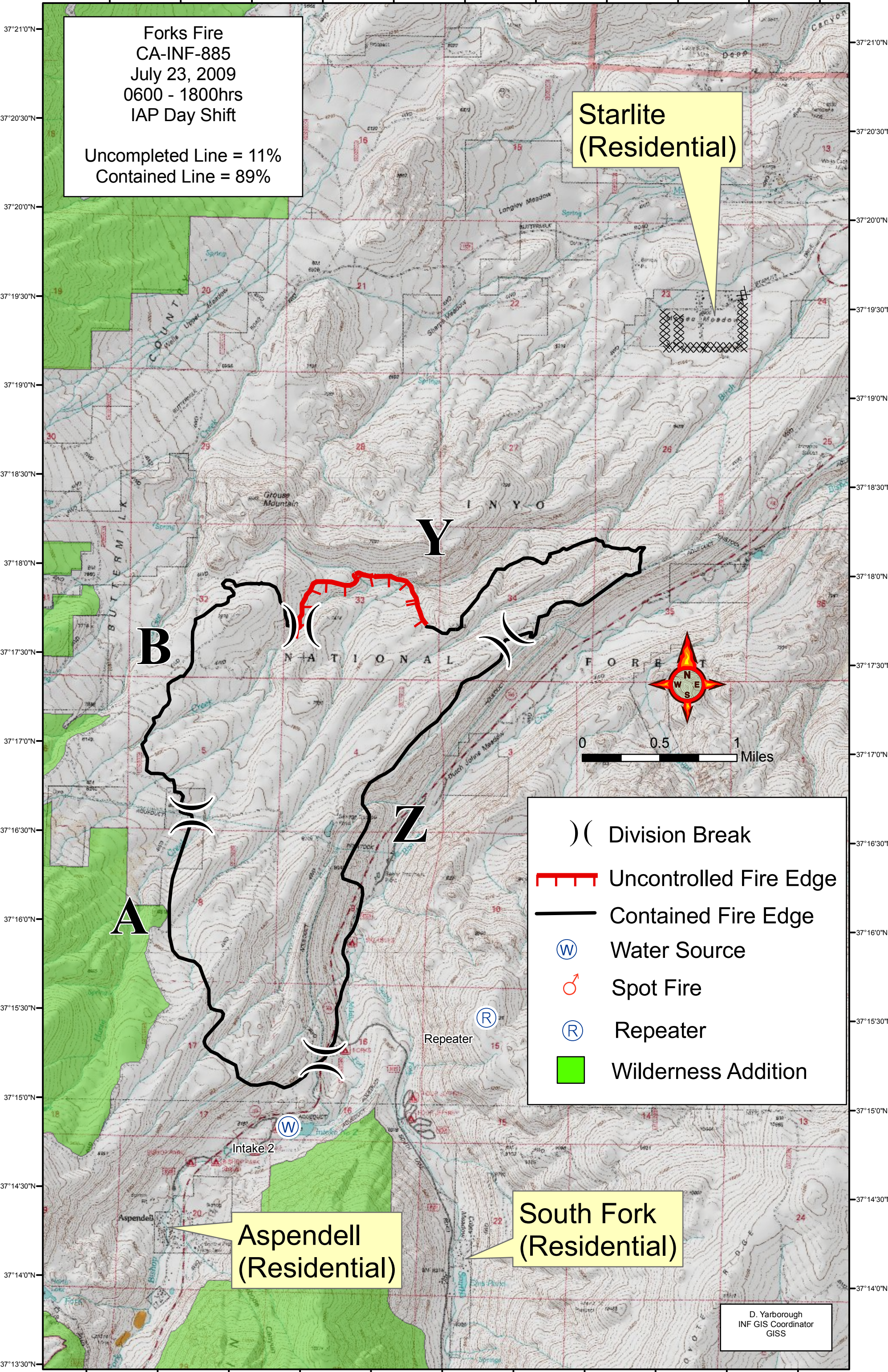


118°36'30"W 118°36'0"W 118°35'30"W 118°35'0"W 118°34'30"W 118°34'0"W 118°33'30"W 118°33'0"W 118°32'30"W 118°32'0"W 118°31'30"W



Forks Fire
CA-INF-885
July 23, 2009
0600 - 1800hrs
IAP Day Shift

Uncompleted Line = 11%
Contained Line = 89%






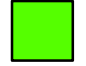
Starlite
(Residential)

Aspendell
(Residential)

South Fork
(Residential)



0 0.5 1 Miles

-) (Division Break
-  Uncontrolled Fire Edge
-  Contained Fire Edge
-  Water Source
-  Spot Fire
-  Repeater
-  Wilderness Addition

D. Yarborough
INF GIS Coordinator
GISS

118°36'30"W 118°36'0"W 118°35'30"W 118°35'0"W 118°34'30"W 118°34'0"W 118°33'30"W 118°33'0"W 118°32'30"W 118°32'0"W 118°31'30"W